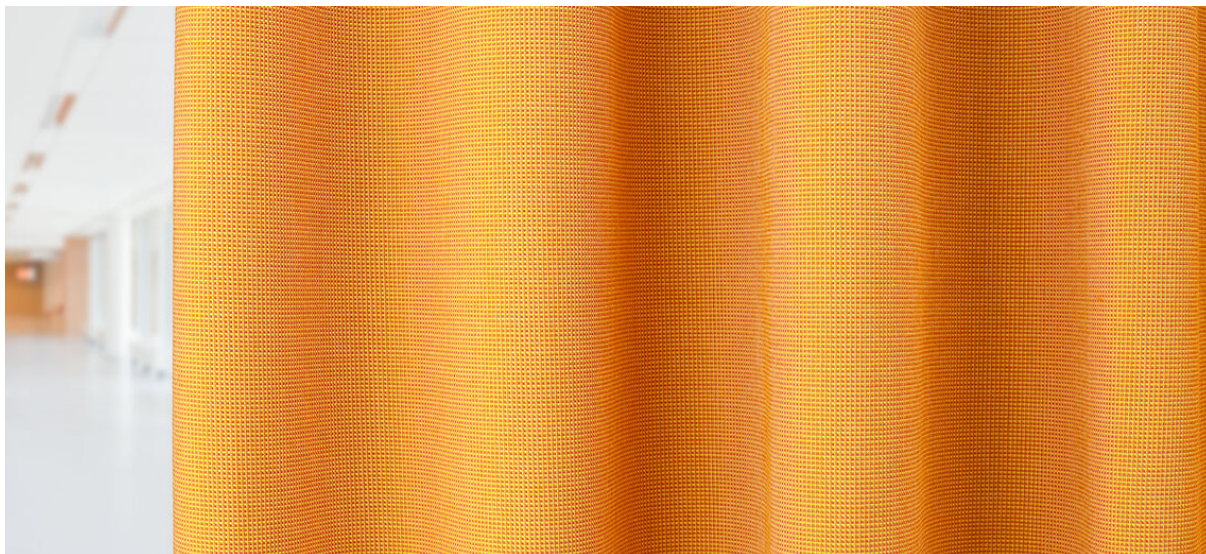


sindo

8027.01 - 8027.37



binder
curtain

descripción
tela para cortinas lisa de colores ligeramente mezclados, 100 % poliéster ignífugo

composición
100% poliéster ignífugo

ancho
± 140 cm, ± 55 inches

peso
± 297 gr/m¹, ± 10 oz/yd¹ fabrics

confort visual & térmico
EN 410/EN 14501

combustión retardada
EN 13773, class 1
BS 5867-2, type C
NF P 92/503-507, M1
DIN 4102, B1
UNI VF 8456-8457, classe 1
IMO 2010 FTP part 7
NFPA 701
CAN ULC S109

resistencia al frotamiento
ISO 105-X12
mojado 4-5 / seco 4-5 (escala 1-5)
AATCC 8
mojado 5 / seco 5 (escala 1-5)

insensibilidad a la luz
ISO 105-B02
light 6 / dark 6-7 (escala 1-8)
AATCC 16.3: 60 hrs
4-5 (escala 1-5)

resistencia al deslizamiento de costuras
ISO 13936-2
lizo 4 mm / trama 4 mm
ASTM D434
lizo 44 lbs / trama 52 lbs

información adicional
diseñadas especialmente para el sector sanitario

mantenimiento

carencia: lizo -1.8% / trama -1.2%

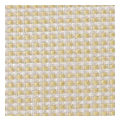


STANDARD
100
S07-0023
Hohenstein HTTI

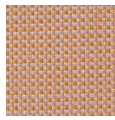


sindo

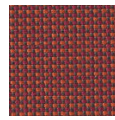
8027.01 - 8027.37



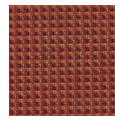
8027.03



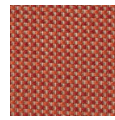
8027.02



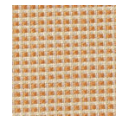
8027.01



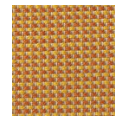
8027.05



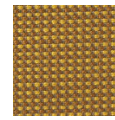
8027.06



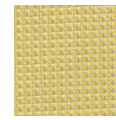
8027.07



8027.11



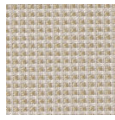
8027.19



8027.12



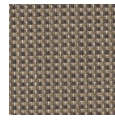
8027.04



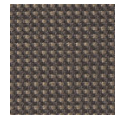
8027.17



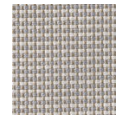
8027.09



8027.13



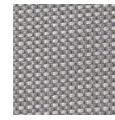
8027.10



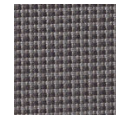
8027.24



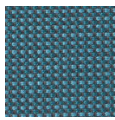
8027.21



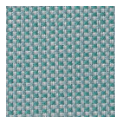
8027.23



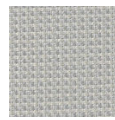
8027.25



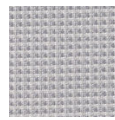
8027.36



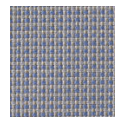
8027.33



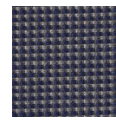
8027.28



8027.22



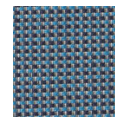
8027.26



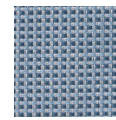
8027.30



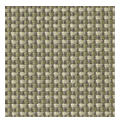
8027.27



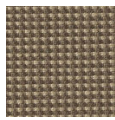
8027.34



8027.37



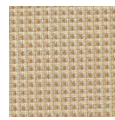
8027.35



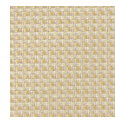
8027.14



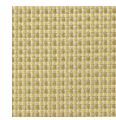
8027.15



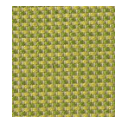
8027.18



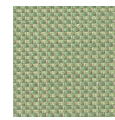
8027.08



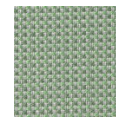
8027.16



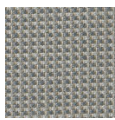
8027.20



8027.31



8027.29



8027.32