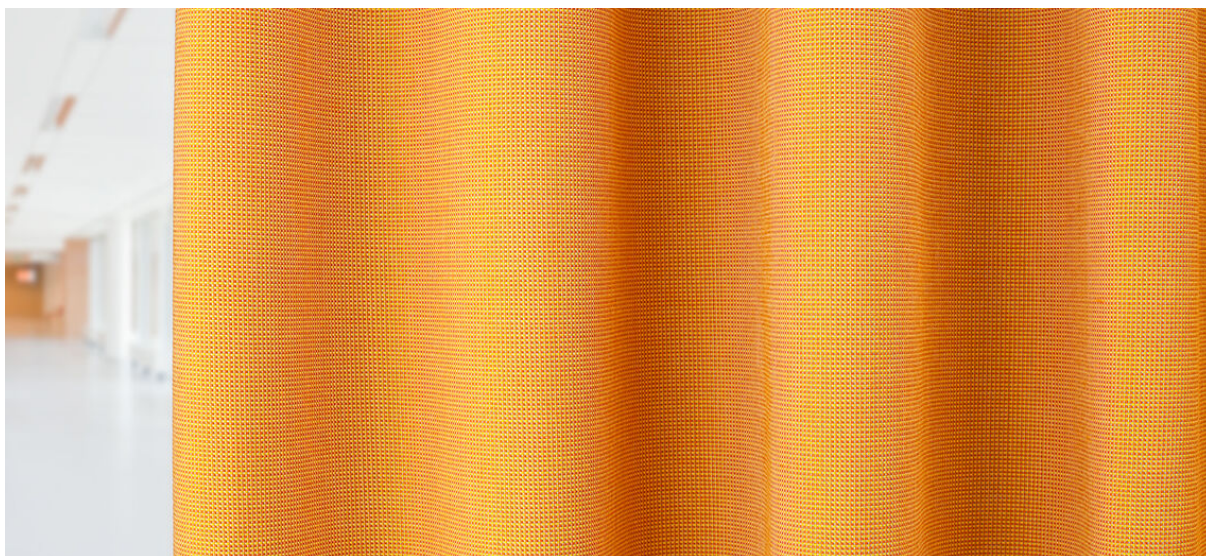


sindo

8027.01 - 8027.37



binder
curtain

descrizione
**tessuto per tende e tendaggi uni
leggermente misto in 100% poliestere con
trattamento antifiamma**

composizione
100% poliestere con trattamento antifiamma

altezza
± 140 cm, ± 55 inches

peso
± 297 gr/m¹, ± 10 oz/yd¹ fabrics

comfort visivo & termico
EN 410/EN 14501

resistenza al fuoco
**EN 13773, class 1
BS 5867-2, type C
NF P 92/503-507, M1
DIN 4102, B1
UNI VF 8456-8457, classe 1
IMO 2010 FTP part 7
NFPA 701
CAN ULC S109**

solidità allo sfregamento
ISO 105-X12
bagnato 4-5 / asciutto 4-5 (scala 1-5)
AATCC 8
bagnato 5 / asciutto 5 (scala 1-5)

resistenza alla luce
ISO 105-B02
light 6 / dark 6-7 (scala 1-8)
AATCC 16.3: 60 hrs
4-5 (scala 1-5)

resistenza al taglio cucitura
ISO 13936-2
catena 4 mm / trama 4 mm
ASTM D434
catena 44 lbs / trama 52 lbs

informazioni supplementari
**progettati e prodotti appositamente per il
settore delle strutture sanitarie**

manutenzione

restringimento: catena -1.8% / trama -1.2%

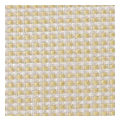


STANDARD
100
S07-0023
Hohenstein HTTI

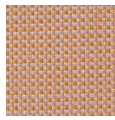


sindo

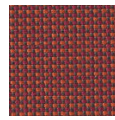
8027.01 - 8027.37



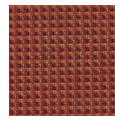
8027.03



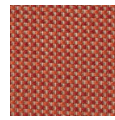
8027.02



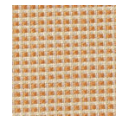
8027.01



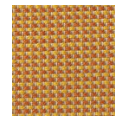
8027.05



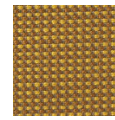
8027.06



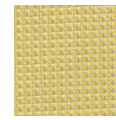
8027.07



8027.11



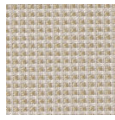
8027.19



8027.12



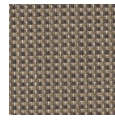
8027.04



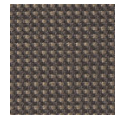
8027.17



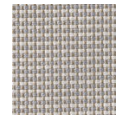
8027.09



8027.13



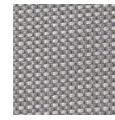
8027.10



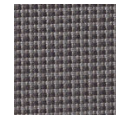
8027.24



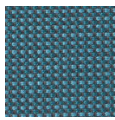
8027.21



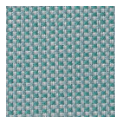
8027.23



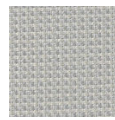
8027.25



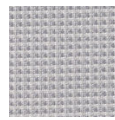
8027.36



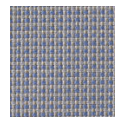
8027.33



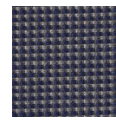
8027.28



8027.22



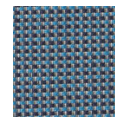
8027.26



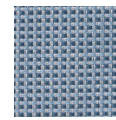
8027.30



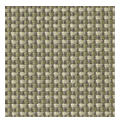
8027.27



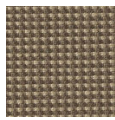
8027.34



8027.37



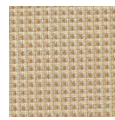
8027.35



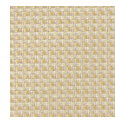
8027.14



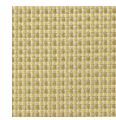
8027.15



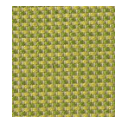
8027.18



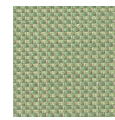
8027.08



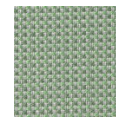
8027.16



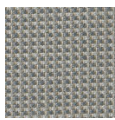
8027.20



8027.31



8027.29



8027.32