

marmara

8025.01 - 8025.24



binder
curtain
sheer/transparent

descripción
tela lisa mate con reverso brillante;
reversible

composición
100% poliéster ignífugo

ancho
± 300 cm, ± 118 inches

peso
± 312 gr/m¹, ± 10 oz/yd¹ fabrics

absorción del ruido
ISO 354
alphaw 0.50 (pleated)
ASTM C423
nrc 0.45

confort visual & térmico
EN 410/EN 14501

combustión retardada
EN 13773, class 1
BS 5867 - 2, type C
NF P 92 / 503 - 507, M1
IMO 2010 FTP part 7
DIN 4102, B1
UNI VF 8456 - 8457, classe 1
NFPA 701
IMO 2010 FTP part 7
CAN ULC S109

resistencia al frotamiento
ISO 105 X12
mojado 4-5 / seco 4-5 (escala 1-5)
AATCC 8
mojado 5 / seco 5 (escala 1-5)

insensibilidad a la luz
ISO 105 B02
5 (escala 1-8)
AATCC 16.3: 60 hours
5 (escala 1-5)

mantenimiento

carencia: lizo -0.4% / trama -0.4%


carencia: lizo -0.4% / trama -0.8%



STANDARD
100
S07-0023
Hohenstein HTTI



Text below the logo, likely identifying the certifying institution.

marmara

8025.01 - 8025.24



8025.01



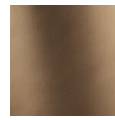
8025.02



8025.03



8025.04



8025.05



8025.06



8025.07



8025.08



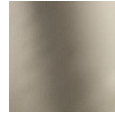
8025.09



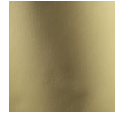
8025.10



8025.11



8025.12



8025.13



8025.14



8025.15



8025.16



8025.17



8025.18



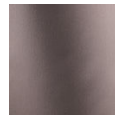
8025.19



8025.20



8025.21



8025.22



8025.23



8025.24