

dolin

8048.01 - 8048.09



Kollektion
curtain

Beschreibung
Helle Strukturmischung

Zusammensetzung
100% schwer entflammables Polyester

Breite
± 140 cm, ± 55 inches

Gewicht
± 407 gr/m¹, ± 13 oz/yd¹ fabrics

Schallabsorption
ISO 354
alphaw 0.85 (pleated)

Visueller & Thermischer Komfort
EN 410/EN 14501

Brandschutzklasse
EN 13773, class 1
BS 5867-2, type C
NF P 92/503-507, M1
DIN 4102, B1
UNI VF 8456-8457, classe 1
IMO 2010 FTP part 7
NFPA 701
CAN ULC S109

Reibechtheit
ISO 105-X12
nass 4-5 / trocken 4-5 (Skala 1-5)
AATCC 8
nass 5 / trocken 5 (Skala 1-5)

Lichtechtheit
ISO 105-B02
6 (Skala 1-8)
AATCC 16.3: 60 hrs
5 (Skala 1-5)

Nahtschiebewiderstand
ISO 13936-2
Kette 5.5 mm / Schuss 4.7 mm
ASTM D434
Kette 32 lbs / Schuss 30 lbs

Pflege



Schrumpfwerte: Kette -2% / Schuss -1%



Schrumpfwerte: Kette -2.8% / Schuss -2%



STANDARD
100
S07-0023
Hohenstein HTTI



Universität und FH HTTI
Hohenstein HTTI

dolin

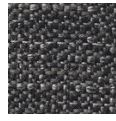
8048.01 - 8048.09



8048.01



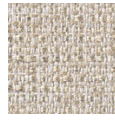
8048.02



8048.03



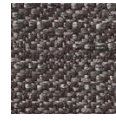
8048.04



8048.05



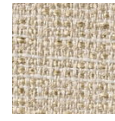
8048.06



8048.07



8048.08



8048.09