

# chira

8053.01 - 8053.32



## Kollektion

**curtain  
sheer/transparent**

## Beschreibung

**Fein transparent mit subtilem vertikalen Effekt**

## Zusammensetzung

**100% schwer entflammables Polyester**

## Breite

**± 317 cm, ± 125 inches**

## Gewicht

**± 143 gr/m<sup>1</sup>, ± 5 oz/yd<sup>1</sup> fabrics**

## Visueller & Thermischer Komfort

**EN 410/EN 14501**

## Brandschutzklasse

**EN 13773, class 1**

**BS 5867 – 2, type C**

**NF P 92 / 503 – 507, M1**

**DIN 4102, B1**

**UNI VF 8456 – 8457, classe 1**

**IMO 2010 FTP part 7**

**NFPA 701**

**CAN ULC S109**

## Reibechtheit

**ISO 105 X12**

nass 4-5 / trocken 4-5 (Skala 1-5)

**AATCC 8**

nass 5 / trocken 5 (Skala 1-5)

## Lichtechtheit

**ISO 105 B02**

6 (Skala 1-8)

**AATCC 16.3: 60 hours**

4-5 (Skala 1-5)

## Pflege



**Schrumpfwerte: Kette -0.5% / Schuss -0.3%**



**Schrumpfwerte: Kette -0.8% / Schuss -0.5%**



STANDARD  
100  
S07-0023  
Hohenstein HTTI



Universität und FH HTTI  
Hohenstein HTTI

# chira

8053.01 - 8053.32

---



8053.01



8053.02



8053.03



8053.04



8053.05



8053.06



8053.07



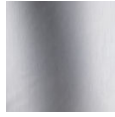
8053.08



8053.09



8053.10



8053.11



8053.12



8053.13



8053.14



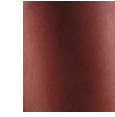
8053.15



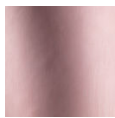
8053.16



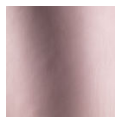
8053.17



8053.18



8053.19



8053.20



8053.21



8053.22



8053.23



8053.24



8053.25



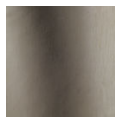
8053.26



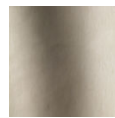
8053.27



8053.28



8053.29



8053.30



8053.31



8053.32