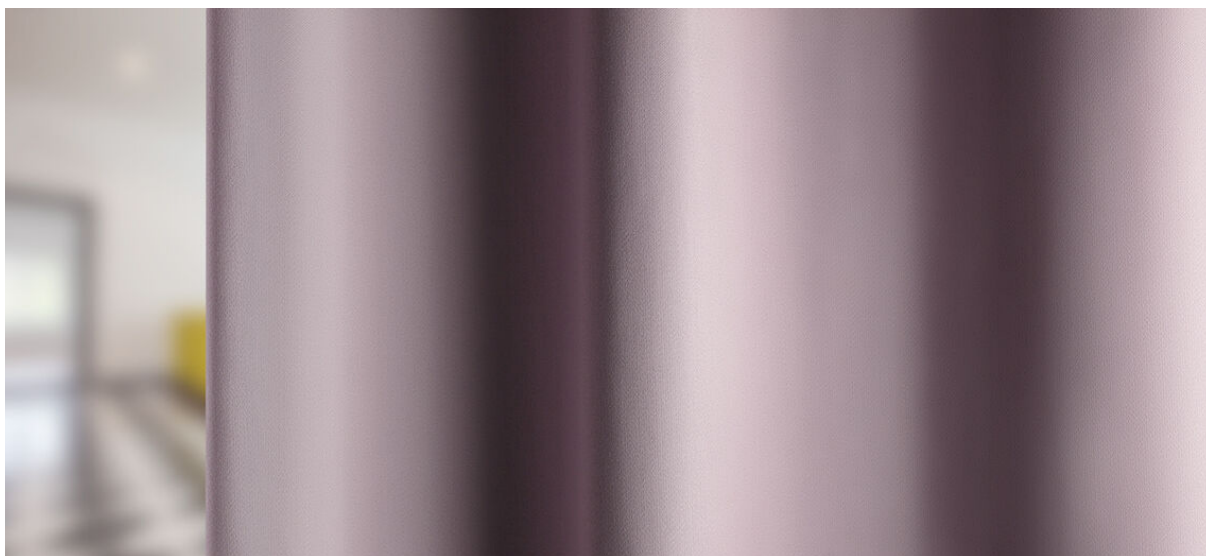


mioko

8057.01 - 8057.33



Kollektion
curtain

Beschreibung
ebenes Satin

Zusammensetzung
100% schwer entflammabares Polyester

Breite
± 140 cm, ± 56 inches

Gewicht
± 413 gr/m¹, ± 12 oz/yd¹ fabrics

Visueller & Thermischer Komfort
EN 410/EN 14501

Brandschutzklasse
EN 13773, class 1
BS 5867-2, type C
NF P 92/503-507, M1
DIN 4102, B1
UNI VF 8456-8457, classe 1
IMO 2010 FTP part 7
NFPA 701
CAN ULC S109

Reibechtheit
ISO 105-X12
wet 5 / dry 5 (Skala 1-5)
AATCC 8
nass 5 / trocken 5 (Skala 1-5)

Lichtechtheit
ISO 105-B02
6-7 (Skala 1-8)
AATCC 16.3: 60 hours
5 (Skala 1-5)

Nahtschiebewiderstand
ASTM D434
warp 45.5 lbs / weft 40.5 lbs

Pflege



Schrumpfwerte: Kette: -1% / Schuss: -0,4%



Schrumpfwerte: Kette: -1,7% / Schuss: -0,6%



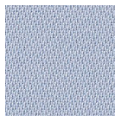
STANDARD
100
S07-0023
Hohenstein HTTI



Text below the logo, likely identifying the certifying institution.

mioko

8057.01 - 8057.33



8057.01



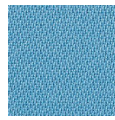
8057.02



8057.03



8057.04



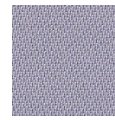
8057.05



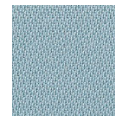
8057.06



8057.07



8057.08



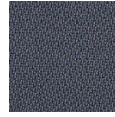
8057.09



8057.10



8057.11



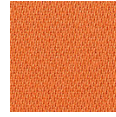
8057.12



8057.13



8057.14



8057.15



8057.16



8057.17



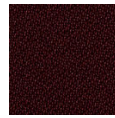
8057.18



8057.19



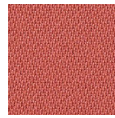
8057.20



8057.21



8057.22



8057.23



8057.24



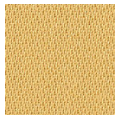
8057.25



8057.26



8057.27



8057.28



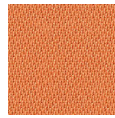
8057.29



8057.30



8057.31



8057.32



8057.33