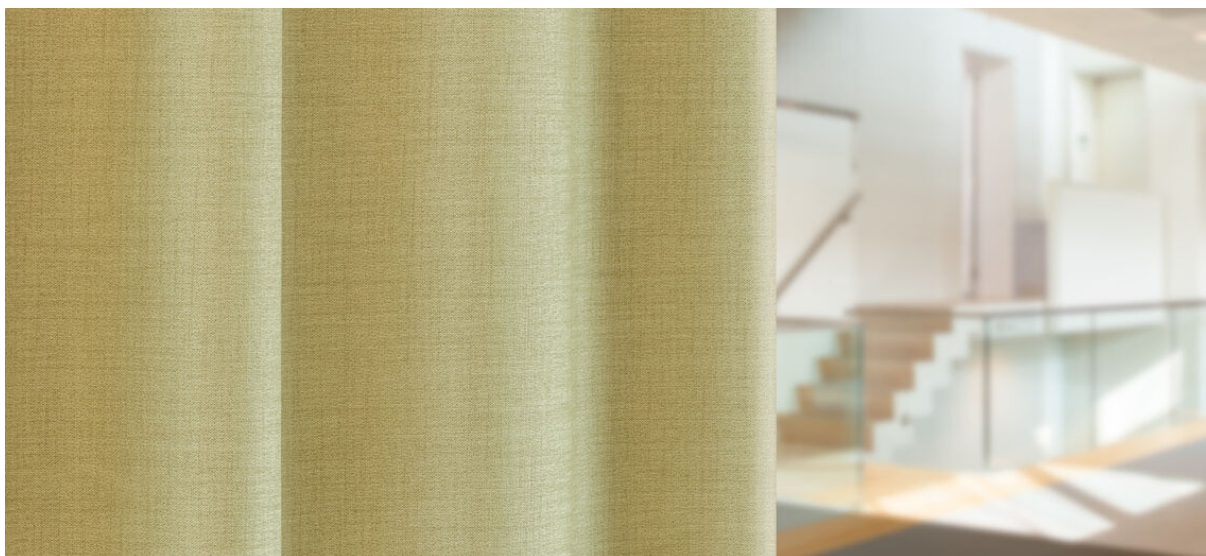


# rani

8067.01 - 8067.22



binder  
curtain

descripción  
**tela para cortinas de aspecto de lino  
estructurado, con efecto de atenuación**

composición  
**100% poliéster ignífero**

ancho  
**± 294 cm, ± 116 inches**

peso  
**± 861 gr/m<sup>1</sup>, ± 28 oz/yd<sup>1</sup> fabrics**

confort visual & térmico  
**EN 410/EN 14501  
AATCC 148**

combustión retardada  
**EN 13773, class 1  
BS 5867-2, type C  
NF P 92/503-507, M1  
DIN 4102, B1  
UNI VF 8456-8457, classe 1  
NFPA 701  
CAN/ULC S109  
IMO 2010 FTP part 7**

resistencia al frotamiento  
**ISO 105-X12**  
mojado 4-5 / seco 4-5 (escala 1-5)  
**AATCC 8**  
mojado 5 / seco 5 (escala 1-5)

insensibilidad a la luz

**ISO 105-B02**  
5 (scale 1 – 8)  
**AATCC 16.3: 60 hours**  
2.5 (escala 1– 5)

resistencia al deslizamiento de costuras  
**ASTM D434**  
warp 53.5 lbs / weft 48 lbs

mantenimiento



**carencia: lizo -0.8% / trama -0.4%**



**carencia: chaîne -1.6% / trame -0.7%**



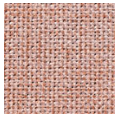
STANDARD  
100  
S07-0023  
Hohenstein HTTI



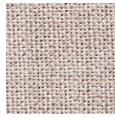
# rani

8067.01 - 8067.22

---



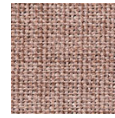
8067.01



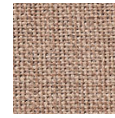
8067.02



8067.03



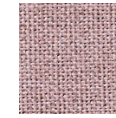
8067.04



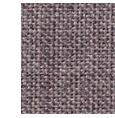
8067.05



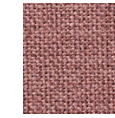
8067.06



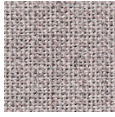
8067.07



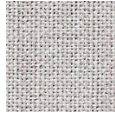
8067.08



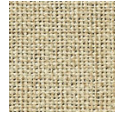
8067.09



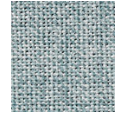
8067.10



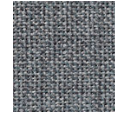
8067.11



8067.12



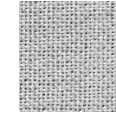
8067.13



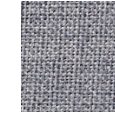
8067.14



8067.15



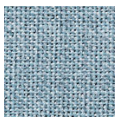
8067.16



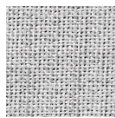
8067.17



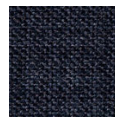
8067.18



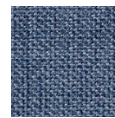
8067.19



8067.20



8067.21



8067.22