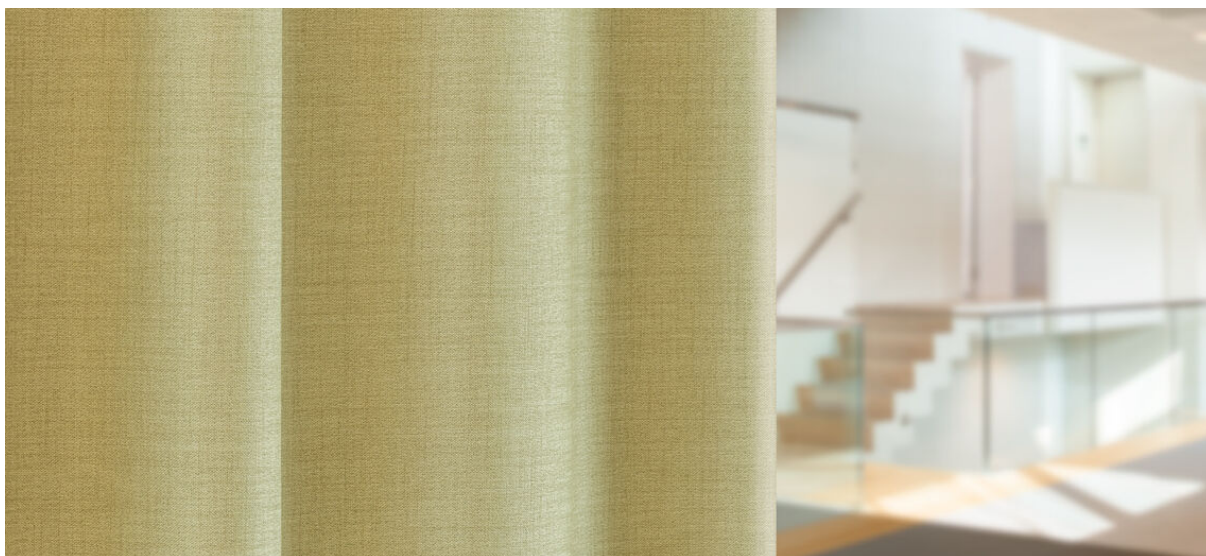


rani

8067.01 - 8067.22



binder
curtain

descrizione
tessuto per tende oscuranti dim-out effetto lino

composizione
100% poliestere con trattamento antifiama

altezza
± 294 cm, ± 116 inches

peso
± 861 gr/m¹, ± 28 oz/yd¹ fabrics

comfort visivo & termico
**EN 410/EN 14501
AATCC 148**

resistenza al fuoco
**EN 13773, class 1
BS 5867-2, type C
NF P 92/503-507, M1
DIN 4102, B1
UNI VF 8456-8457, classe 1
NFPA 701
CAN/ULC S109
IMO 2010 FTP part 7**

solidità allo sfregamento
ISO 105-X12
bagnato 4-5 / asciutto 4-5 (scala 1-5)
AATCC 8
bagnato 5 / asciutto 5 (scala 1-5)

resistenza alla luce

ISO 105-B02
5 (scala 1 - 8)
AATCC 16.3: 60 hours
2.5 (scala 1- 5)

resistenza al taglio cucitura
ASTM D434
warp 53.5 lbs / weft 48 lbs

manutenzione



restringimento: catena -0.8% / trama -0.4%



restringimento: catena -1.6% / trama -0.7%

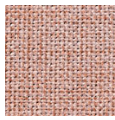


STANDARD
100
S07-0023
Hohenstein HTTI

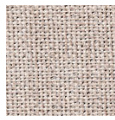


rani

8067.01 - 8067.22



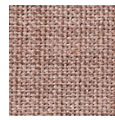
8067.01



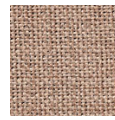
8067.02



8067.03



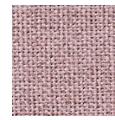
8067.04



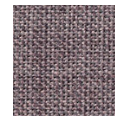
8067.05



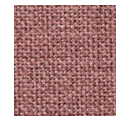
8067.06



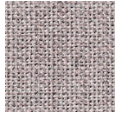
8067.07



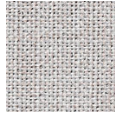
8067.08



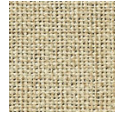
8067.09



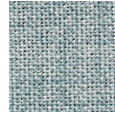
8067.10



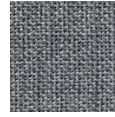
8067.11



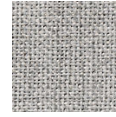
8067.12



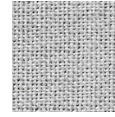
8067.13



8067.14



8067.15



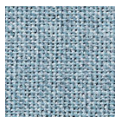
8067.16



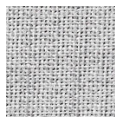
8067.17



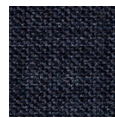
8067.18



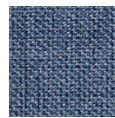
8067.19



8067.20



8067.21



8067.22