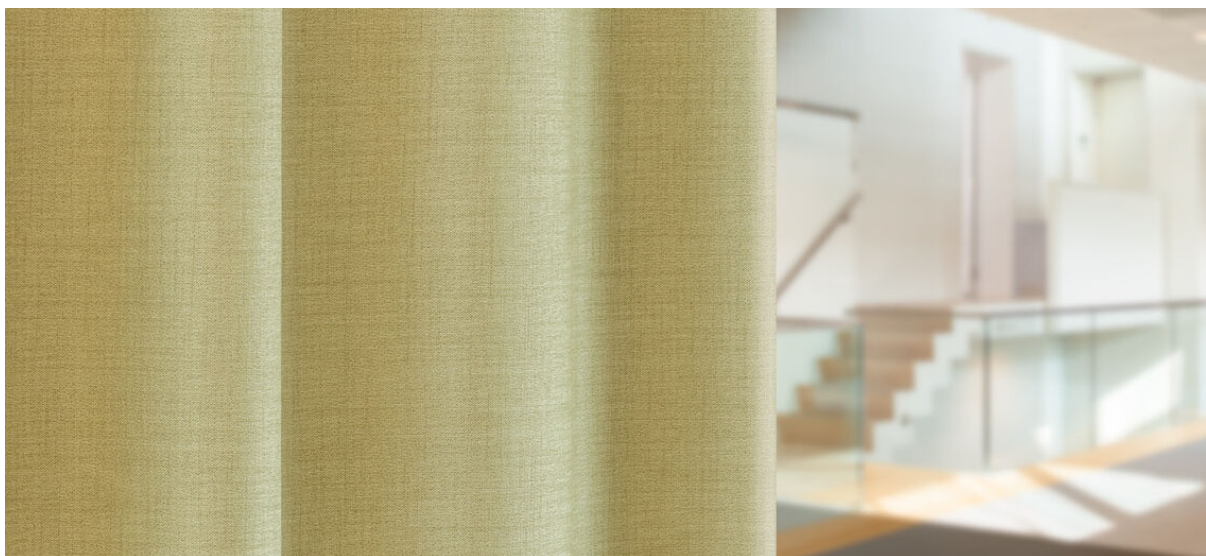


rani

8067.01 - 8067.22



binder
curtain

描述

编织纹理亚麻外观遮光窗帘面料

组成

100% 阻燃聚酯纤维

宽度

± 294 cm, ± 116 inches

重量

± 861 gr/m², ± 28 oz/yd² fabrics

温度及视觉舒适度

EN 410/EN 14501

AATCC 148

阻燃

EN 13773, class 1

BS 5867-2, type C

NF P 92/503-507, M1

DIN 4102, B1

UNI VF 8456-8457, classe 1

NFPA 701

CAN/ULC S109

IMO 2010 FTP part 7

耐擦拭

ISO 105-X12

湿 4-5 / 干 4-5 (由 1-5)

AATCC 8

湿 5 / 干 5 (由 1-5)

耐褪色

ISO 105-B02

5 (scale 1 - 8)

AATCC 16,3: 60 hours

2.5 (由 1-5)

耐滑缝

ASTM D434

warp 53,5 lbs / weft 48 lbs



收缩□ : 纵向收缩比 -0.8% / 横向收缩比 -0.4%



收缩□ : 纵向收缩比 -1.6% / 横向收缩比 -0.7%



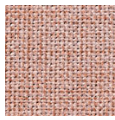
STANDARD
100
S07-0023
Hohenstein HTTI



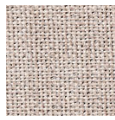
© Hochschule Rhein-Waal
2018

rani

8067.01 - 8067.22



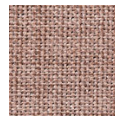
8067.01



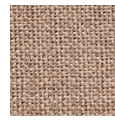
8067.02



8067.03



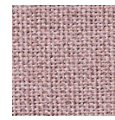
8067.04



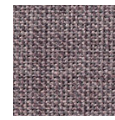
8067.05



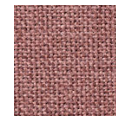
8067.06



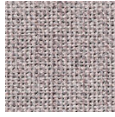
8067.07



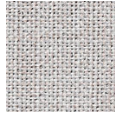
8067.08



8067.09



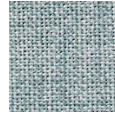
8067.10



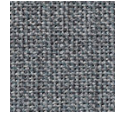
8067.11



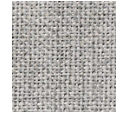
8067.12



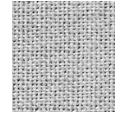
8067.13



8067.14



8067.15



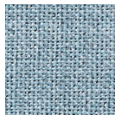
8067.16



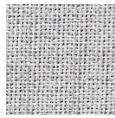
8067.17



8067.18



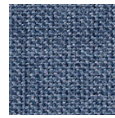
8067.19



8067.20



8067.21



8067.22