

elba

8069.01 - 8069.20



binder
curtain

description
structured melange look curtain fabric, black out

composition
100% flame retardant polyester acrylic coating

width
± 277 cm, ± 109 inches

weight
± 1075 gr/m¹, ± 35 oz/yd¹ fabrics

sound absorption
ISO 354
alphaw 0.35

visual & thermal comfort
EN 410/EN 14501
AATCC 148

flame retardancy
EN 13773, class 1
BS 5867-2, type B
DIN 4102, B1
UNI VF 8456-8457, classe 1
NFPA 701
CAN/ULC S109
IMO 2010 FTP part 7

colorfastness to crocking
ISO 105-X12
wet 4-5 / dry 4-5 (scale 1-5)
AATCC 8
wet 5 / dry 5 (scale 1-5)

colorfastness to light
ISO 105-B02
5 (scale 1-8)
AATCC 16.3: 60 hours
2.5 (scale 1-5)

seam slippage
ASTM D434
warp 44 lbs / weft 49.5 lbs

care



shrinkage: warp -0.9% / weft -0.6%



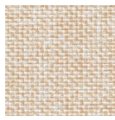
shrinkage: warp -1.5% / weft -1.2%



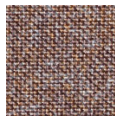
Hochschule für Angewandte Wissenschaften
2014-2015

elba

8069.01 - 8069.20



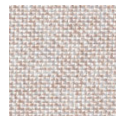
8069.01



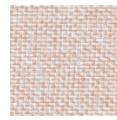
8069.02



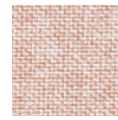
8069.03



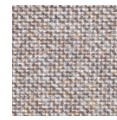
8069.04



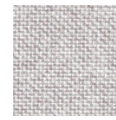
8069.05



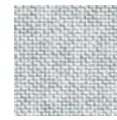
8069.06



8069.07



8069.08



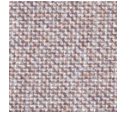
8069.09



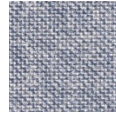
8069.10



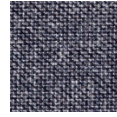
8069.11



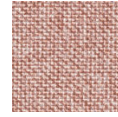
8069.12



8069.13



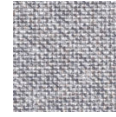
8069.14



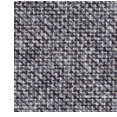
8069.15



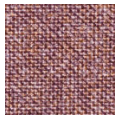
8069.16



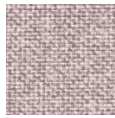
8069.17



8069.18



8069.19



8069.20