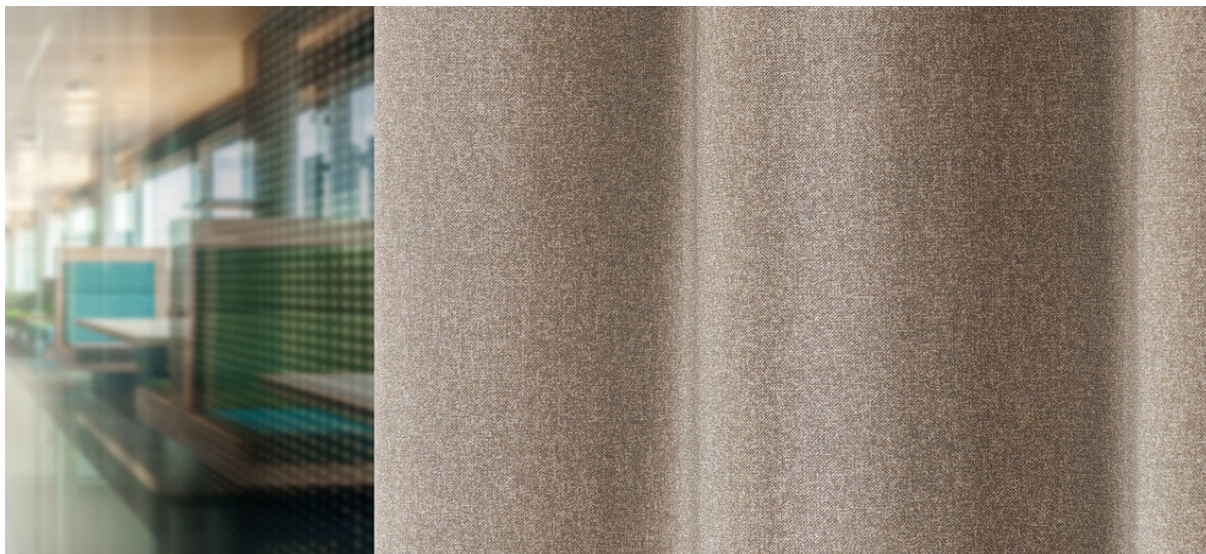


elba

8069.01 - 8069.20



binder
curtain

descripción
**tela para cortinas con aspecto de mezcla
estructurada, con efecto de oscurecimiento**

composición
**100% flame retardant polyester acrylic
coating**

ancho
± 277 cm, ± 109 inches

peso
± 1075 gr/m¹, ± 35 oz/yd¹ fabrics

absorción del ruido
ISO 354
alphaw 0.35

confort visual & térmico
EN 410/EN 14501
AATCC 148

combustión retardada
EN 13773, class 1
BS 5867-2, type B
DIN 4102, B1
UNI VF 8456-8457, classe 1
NFPA 701
CAN/ULC S109
IMO 2010 FTP part 7

resistencia al frotamiento
ISO 105-X12
mojado 4-5 / seco 4-5 (escala 1-5)
AATCC 8
nat 5 / droog 5 (escala 1-5)

insensibilidad a la luz
ISO 105-B02
5 (escala 1-8)
AATCC 16.3: 60 hours
2.5 (escala 1-5)

resistencia al deslizamiento de costuras
ASTM D434
warp 44 lbs / weft 49.5 lbs

mantenimiento

carencia: lizo -0.9% / trama -0.6%

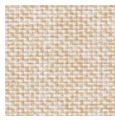

carencia: lizo -1.5% / trama -1.2%



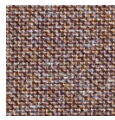
Hochschule Rhein-Waal
University of Applied Sciences

elba

8069.01 - 8069.20



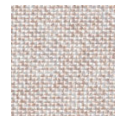
8069.01



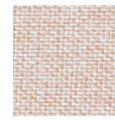
8069.02



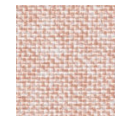
8069.03



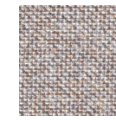
8069.04



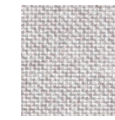
8069.05



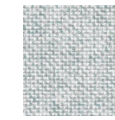
8069.06



8069.07



8069.08



8069.09



8069.10



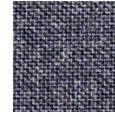
8069.11



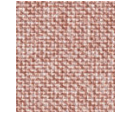
8069.12



8069.13



8069.14



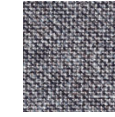
8069.15



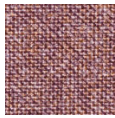
8069.16



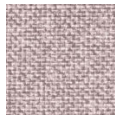
8069.17



8069.18



8069.19



8069.20