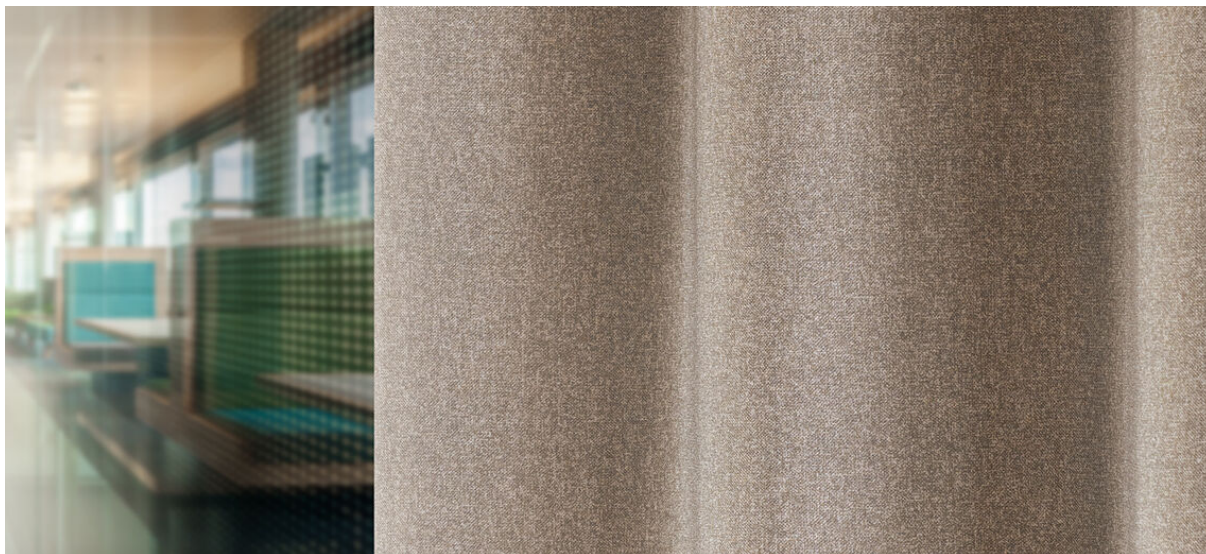


elba

8069.01 - 8069.20



binder
curtain

descrição
**tecido para cortina com aspecto melange
estruturado, preto**

composição
**100% flame retardant polyester acrylic
coating**

largura
± 277 cm, ± 109 inches

gramagem
± 1075 gr/m¹, ± 35 oz/yd¹ fabrics

absorção acústica
ISO 354
alphaw 0.35

conforto visual & térmico
EN 410/EN 14501
AATCC 148

resistência ao fogo
EN 13773, class 1
BS 5867-2, type B
DIN 4102, B1
UNI VF 8456-8457, classe 1
NFPA 701
CAN/ULC S109
IMO 2010 FTP part 7

resistência à fricção
ISO 105-X12
molhado 4-5 / seco 4-5 (escala 1-5)
AATCC 8
nat 5 / droog 5 (escala 1-5)

resistência à luz
ISO 105-B02
5-6 (escala 1-8)
AATCC 16.3: 60 hours
5 (escala 1-5)

resistência ao deslizamento das costuras
ASTM D434
warp 44 lbs / weft 49.5 lbs

manutenção

**encolhimento: alongamento -0.9% / trama
-0.6%**

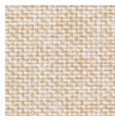
**encolhimento: alongamento -1.5% / trama
-1.2%**



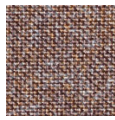
Hochschule Rhein-Waal
University of Applied Sciences
47805 Krefeld

elba

8069.01 - 8069.20



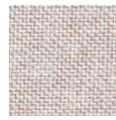
8069.01



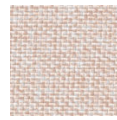
8069.02



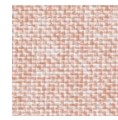
8069.03



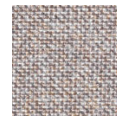
8069.04



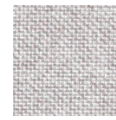
8069.05



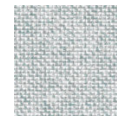
8069.06



8069.07



8069.08



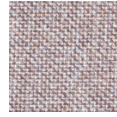
8069.09



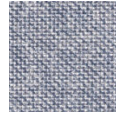
8069.10



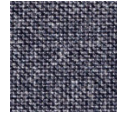
8069.11



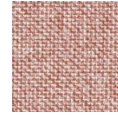
8069.12



8069.13



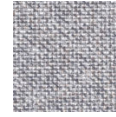
8069.14



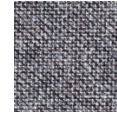
8069.15



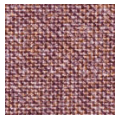
8069.16



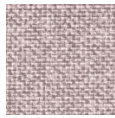
8069.17



8069.18



8069.19



8069.20