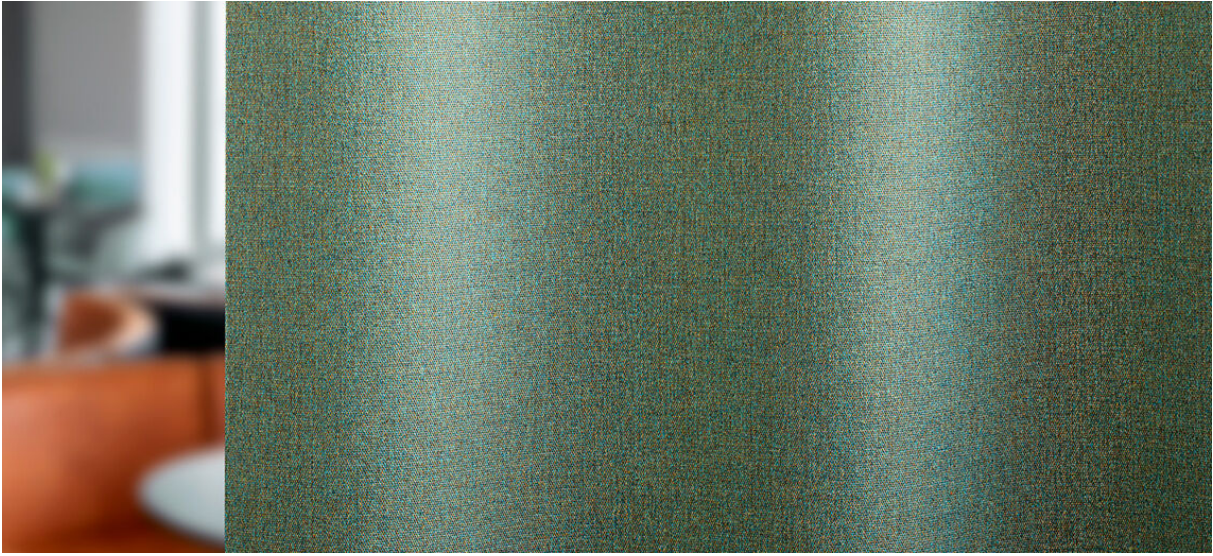


tula

8081.01 - 8081.16



binder
curtain

descripción
**estructura de mezcla de color sutil con una
apariencia de lana**

composición
**60% recycled polyester FR / 40% polyester
FR**

ancho
± 149 cm, ± 59 inches

peso
± 395 gr/m², ± 13 oz/yd² fabrics

absorción del ruido
ISO 354
alphaw 0.75 (pleated)

confort visual & térmico
EN 410/EN 14501

combustión retardada
EN 13773, class 1
BS 5867-2, type C
NF P 92/503-507, M1
DIN 4102, B1
UNI VF 8456-8457, classe 1
IMO 2010 FTP part 7
NFPA 701
CAN/ULC S109

resistencia al frotamiento
ISO 105-X12
mojado 4-5 / seco 4-5 (escala 1-5)
AATCC 8
mojado 5 / seco 5 (escala 1-5)

insensibilidad a la luz
ISO 105-B02
6 (escala 1-8)
AATCC 16.3: 60 hours
5 (escala 1-5)

resistencia al deslizamiento de costuras
ISO 13936-2
warp 3 mm / weft 4.7 mm
ASTM D434
warp 49 lbs / weft 51 lbs

mantenimiento



carencia: lizo: -2% / trama: -1.6%

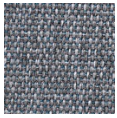


STANDARD
100
S07-0023
Hohenstein HTTI

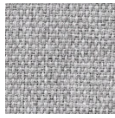


tula

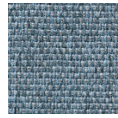
8081.01 - 8081.16



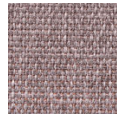
8081.01



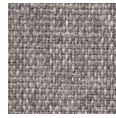
8081.02



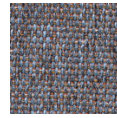
8081.03



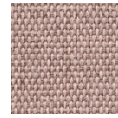
8081.04



8081.05



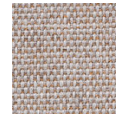
8081.06



8081.07



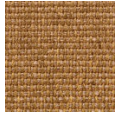
8081.08



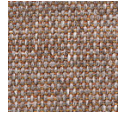
8081.09



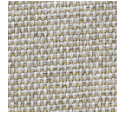
8081.10



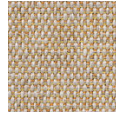
8081.11



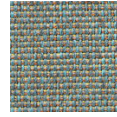
8081.12



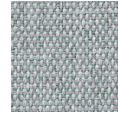
8081.13



8081.14



8081.15



8081.16