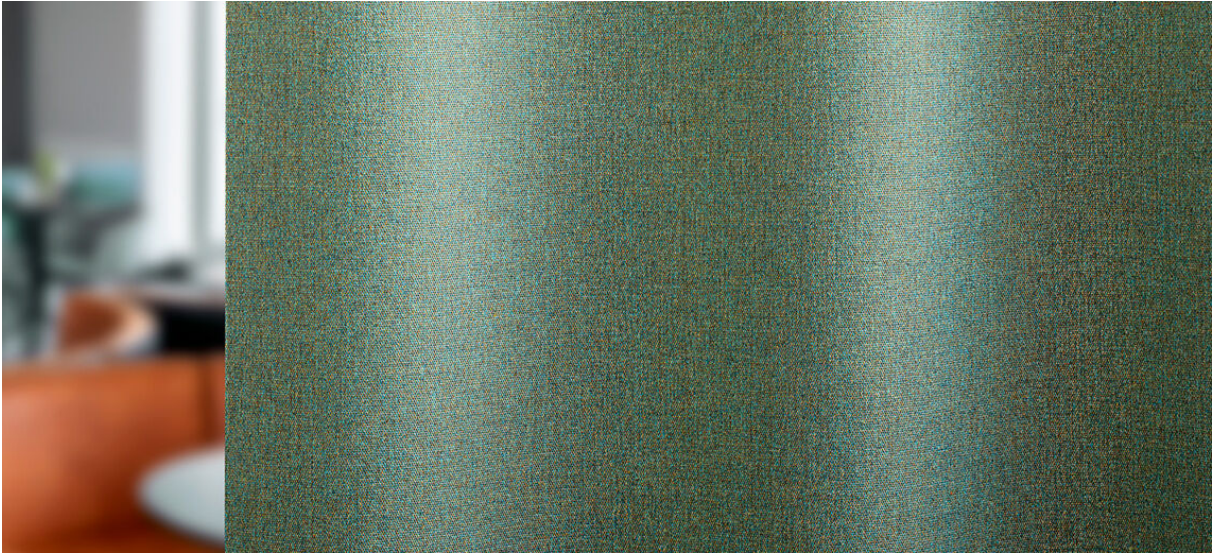


tula

8081.01 - 8081.16



binder
curtain

opis
subtelna struktura melanżu o wełnianym
wyglądzie

skład
60% recycled polyester FR / 40% polyester
FR

szerokość
± 149 cm, ± 59 inches

gramatura
± 395 gr/m¹, ± 13 oz/yd¹ fabrics

współczynnik pochłaniania dźwięku
ISO 354

alphaw 0.75 (pleated)

komfort wizualny & ciepły
EN 410/EN 14501

odporność ogniowa
EN 13773, class 1
BS 5867-2, type C
NF P 92/503-507, M1
DIN 4102, B1
UNI VF 8456-8457, classe 1
IMO 2010 FTP part 7
NFPA 701
CAN/ULC S109

odporność na wycieranie
ISO 105-X12
mokre 4-5 / suche 4-5 (skala 1-5)

AATCC 8
mokre 5 / suche 5 (skala 1-5)

odporność na działanie światła
ISO 105-B02
6 (skala 1-8)
AATCC 16.3: 60 hours
5 (skala 1-5)

wytrzymałość szwów
ISO 13936-2
warp 3 mm / weft 4.7 mm
ASTM D434
warp 49 lbs / weft 51 lbs

codzienna dbałość o produkt



kurczliwość: alongamento: -2% / trama:
-1.6%

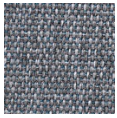


STANDARD
100
S07-0023
Hohenstein HTTI

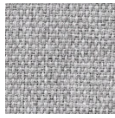


tula

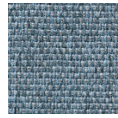
8081.01 - 8081.16



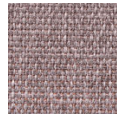
8081.01



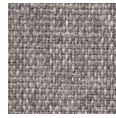
8081.02



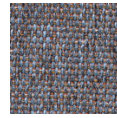
8081.03



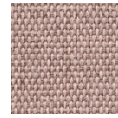
8081.04



8081.05



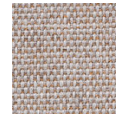
8081.06



8081.07



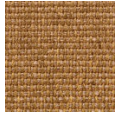
8081.08



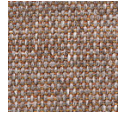
8081.09



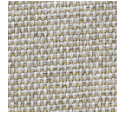
8081.10



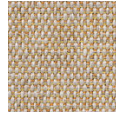
8081.11



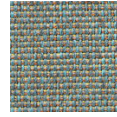
8081.12



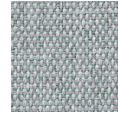
8081.13



8081.14



8081.15



8081.16