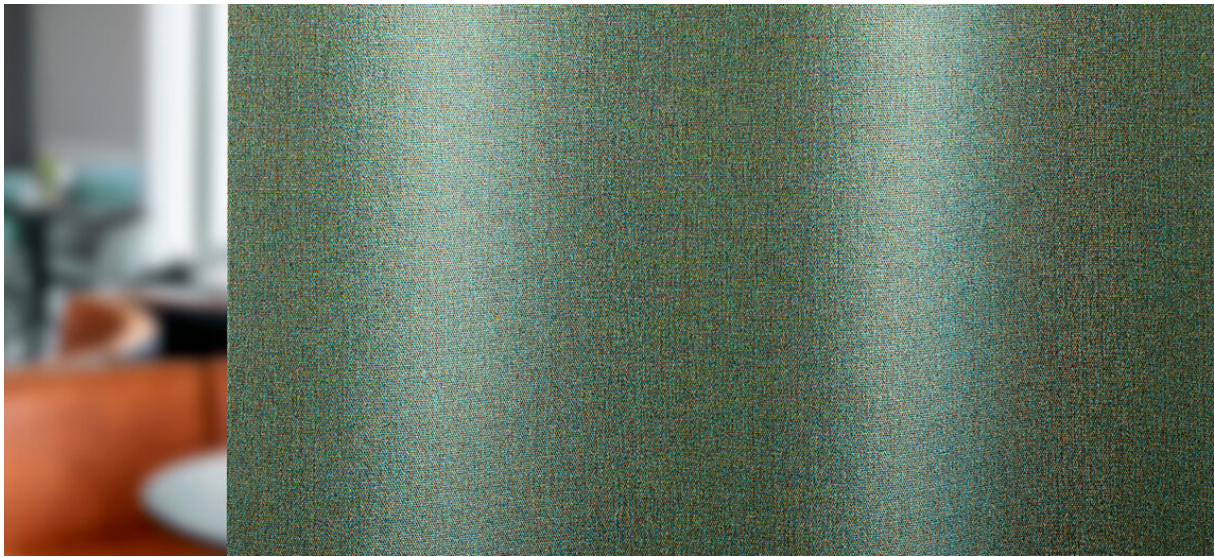


# tula

8081.01 - 8081.16



binder  
curtain

descrição

**estrutura de "melange" subtilmente colorida com uma aparência lanosa e seca**

composição

**60% recycled polyester FR / 40% polyester FR**

largura

**± 149 cm, ± 59 inches**

gramagem

**± 395 gr/m<sup>1</sup>, ± 13 oz/yd<sup>1</sup> fabrics**

absorção acústica

**ISO 354**

alphaw 0.75 (pleated)

conforto visual & térmico

**EN 410/EN 14501**

resistência ao fogo

**EN 13773, class 1**

**BS 5867-2, type C**

**NF P 92/503-507, M1**

**DIN 4102, B1**

**UNI VF 8456-8457, classe 1**

**IMO 2010 FTP part 7**

**NFPA 701**

**CAN/ULC S109**

resistência à fricção

**ISO 105-X12**

molhado 4-5 / seco 4-5 (escala 1-5)

**AATCC 8**

molhado 5 / seco 5 (escala 1-5)

resistência à luz

**ISO 105-B02**

6 (escala 1-8)

**AATCC 16.3: 60 hours**

5 (escala 1-5)

resistência ao deslizamento das costuras

**ISO 13936-2**

warp 3 mm / weft 4.7 mm

**ASTM D434**

warp 49 lbs / weft 51 lbs

manutenção



**encolhimento: alongamento: -2% / trama: -1.6%**



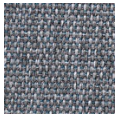
STANDARD  
100  
S07-0023  
Hohenstein HTTI



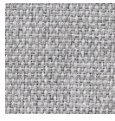
# tula

8081.01 - 8081.16

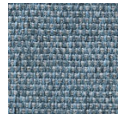
---



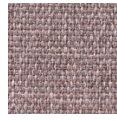
8081.01



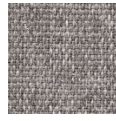
8081.02



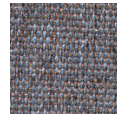
8081.03



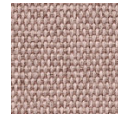
8081.04



8081.05



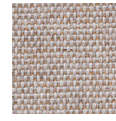
8081.06



8081.07



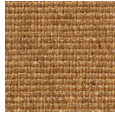
8081.08



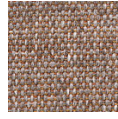
8081.09



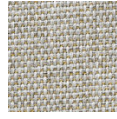
8081.10



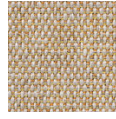
8081.11



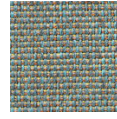
8081.12



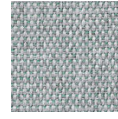
8081.13



8081.14



8081.15



8081.16