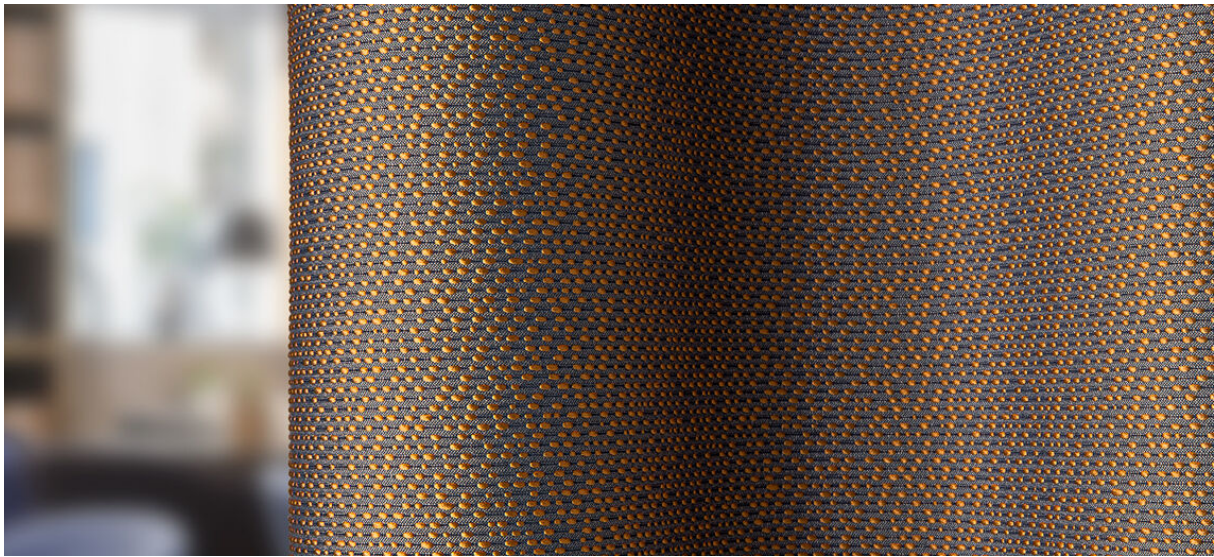


delos

8082.01 - 8082.24



binder
curtain

description
allover 3D structured weave with a two-toned coloured, sheen yarn effect

composition
32% recycled polyester FR / 68% polyester FR

width
± 136 cm, ± 54 inches

weight
± 354 gr/m¹, ± 11 oz/yd¹ fabrics

visual & thermal comfort
EN 410/EN 14501

flame retardancy
EN 13773, class 1
BS 5867-2, type C
NF P 92/503-507, M1
DIN 4102, B1
UNI VF 8456-8457, classe 1
IMO 2010 FTP part 7
NFPA 701
CAN/ULC S109

colorfastness to crocking
ISO 105-X12
wet 4-5 / dry 4-5 (scale 1-5)
AATCC 8
wet 5 / dry 5 (scale 1-5)

colorfastness to light

ISO 105-B02
6 (scale 1-8)
AATCC 16.3: 60 hours
4.5 (scale 1-5)

seam slippage
ISO 13936-2
warp 3.6 mm / weft 3.6 mm
ASTM D434
warp 46 lbs / weft 65 lbs

care



shrinkage: warp: -2.1% / weft: -1.5%

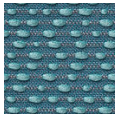


STANDARD
100
S07-0023
Hohenstein HTTI

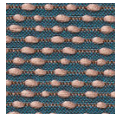


delos

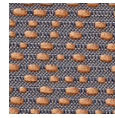
8082.01 - 8082.24



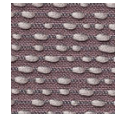
8082.01



8082.02



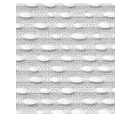
8082.03



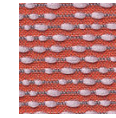
8082.04



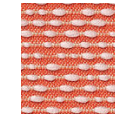
8082.05



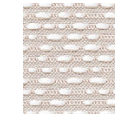
8082.06



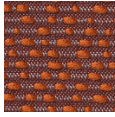
8082.07



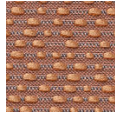
8082.08



8082.09



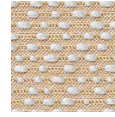
8082.10



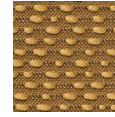
8082.11



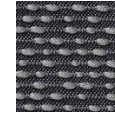
8082.12



8082.13



8082.14



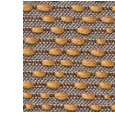
8082.15



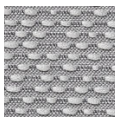
8082.16



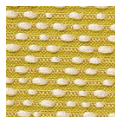
8082.17



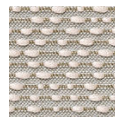
8082.18



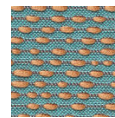
8082.19



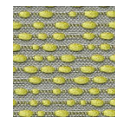
8082.20



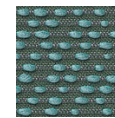
8082.21



8082.22



8082.23



8082.24