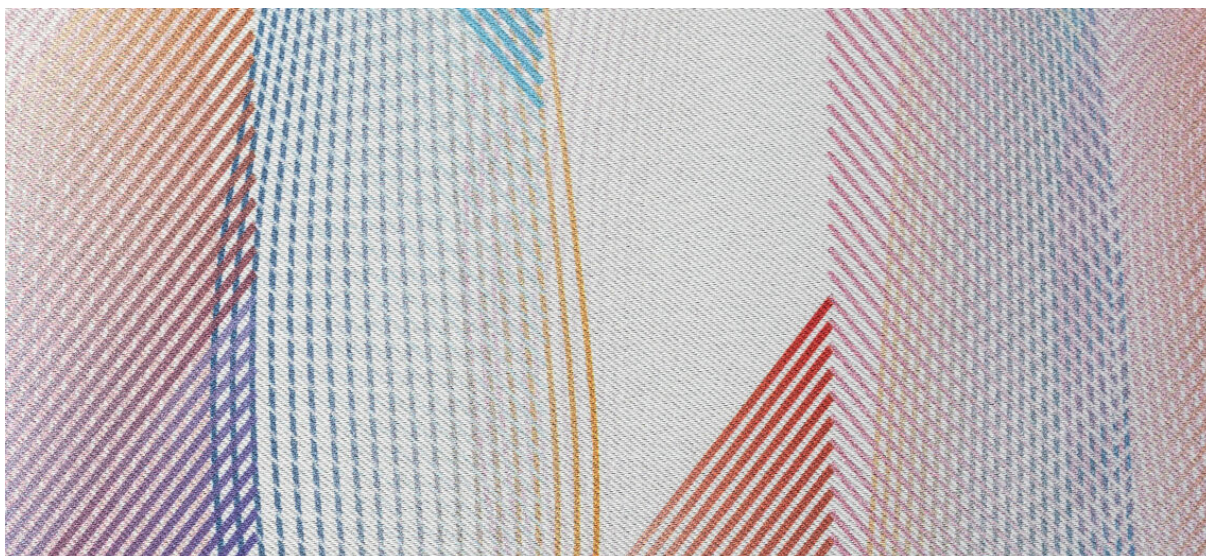


bedra+print

8061.01



binder

curtain+print

description

floor-to-ceiling curtain+print dim out with a soft sheen

composition

100% flame retardant polyester

width

± 290 cm, ± 114 inches

printable width

± 280 cm, ± 110 inches

weight

± 782 gr/m², ± 25 oz/yd² fabrics

visual & thermal comfort

EN 410/EN 14501

AATCC 148

flame retardancy

EN 13773, class 1

BS 5867 – 2, type C

NF P 92 / 503 – 507, M1

DIN 4102, B1

UNI VF 8456 – 8457, classe 1

NFPA 701

CAN / ULC S109

IMO 2010 FTP part 7

colorfastness to crocking

ISO 105-X12

wet 5 / dry 5 (scale 1–5)

AATCC 8

wet 5 / dry 5 (scale 1–5)

colorfastness to light

ISO 105-B02

6 (scale 1–8)

AATCC 16.3: 60 hours

4-5 (scale 1–5)

seam slippage

ASTM D434

warp 43.5 lbs / weft 48 lbs

additional information

This image is not part of our collection, but should be regarded as an example.

care



shrinkage: warp -0.4% / weft -1.4%



shrinkage: warp -2.5% / weft -1.5%

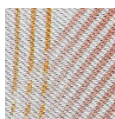


STANDARD
100
S07-0023
Hohenstein HTTI



bedra+print

8061.01



8061.01