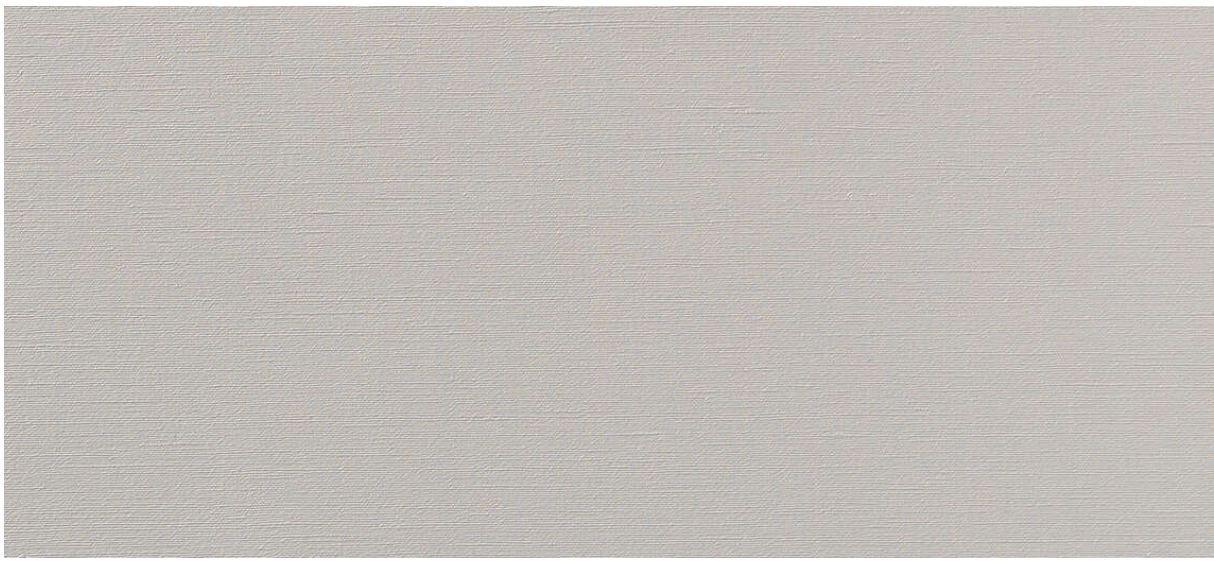


# dalma

7024.01 - 7024.22



## binder

upholstery  
vinyl

## 描述

丝绸编织结构

## 组成

发泡PVC,加棉或涂底

## 宽度

± 137-140 cm, ± 54-55 inches

## 重量

底层: ± 110 gr/m<sup>2</sup>, ± 5 oz/yd<sup>1</sup>

涂层: ± 690 gr/m<sup>2</sup>, ± 31 oz/yd<sup>1</sup>

## 厚度

1,1 mm, 0,04 inches

## 阻燃

EN 1021/1—2

BS 5852, crib 5

NF P 92/503 — 507, M2

NF D60—013 (AM 18)

DIN 4102, B2

UNI 9175, classe 1 IM

Cal TB 117

NFPA 260, class 1

IMO 2010 FTP part 8

## 耐磨性

ISO 12947—2

> 300,000 rubs martindale

ASTM D4157

100,000 double rubs wyzenbeek

## 耐擦拭

ISO 105—X12

wet 5 / dry 5 (scale 1—5)

AATCC 8

wet 5 / dry 5 (scale 1—5)

## 耐褪色

ISO 105—B02

7 (scale 1—8)

ASTM D4329: 150 hours

4 (scale 1—5)

## 耐血液，尿液，汗液和皮肤脂肪

EN 12720

5 (scale 1—5)

## 屈伸强度

ISO 1421

length 470 N / width 313 N

ASTM D2261

length 7.3 lbs / width 9.2 lbs

## 灵活性

ISO 7854

400,000 cycles

## 涂层粘结力

ASTM D751

length 8.3 lbf / width 5.2 lbf



**vinyl**   
COMMITTED TO  
SUSTAINABLE DEVELOPMENT

# dalma

7024.01 - 7024.22

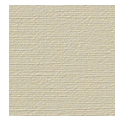
---



7024.01



7024.02



7024.03



7024.04



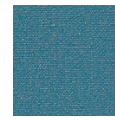
7024.05



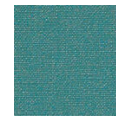
7024.06



7024.07



7024.08



7024.09



7024.10



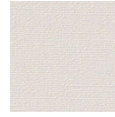
7024.11



7024.12



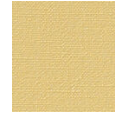
7024.13



7024.14



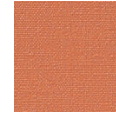
7024.15



7024.16



7024.17



7024.18



7024.19



7024.20



7024.21



7024.22