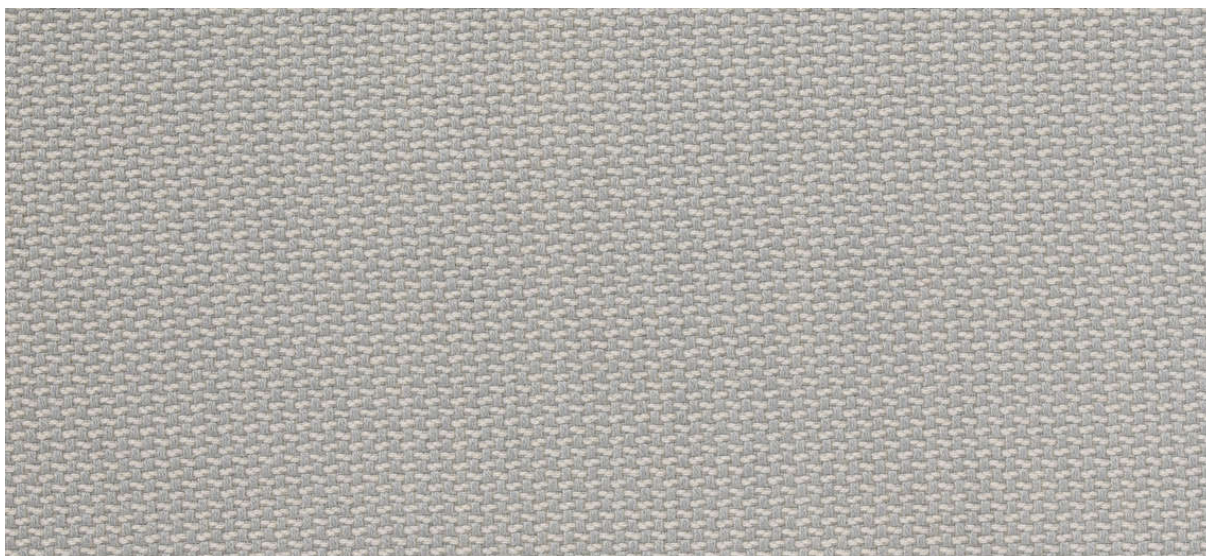


lindau

7028.01 - 7028.33



collection

**upholstery
textile**

description

**2-colour woollen upholstery fabric that can
be used on both sides**

composition

80% wool / 20% polyamide

width

± 140 cm, ± 55 inches

weight

± 536 gr/m², ± 17 oz/yd² fabrics

flame retardancy

EN 1021/1-2

BS 5852, crib 5

UNI 9175, classe 1 IM

Cal TB 117

NFPA 260, class 1

IMO 2010 FTP part 8

NF D 60-013 - AM18

abrasion

ISO 12947-2

100.000 rubs martindale

ASTM D4157

45.000 double rubs wyzenbeek

pilling

ISO 12945-2

3 (scale 1-5)

ASTM D3511

2,5 (scale 1-5)

colorfastness to crocking

ISO 105-X12

wet 4 / dry 4-5 (scale 1-5)

AATCC 8

wet 5 / dry 4.5 (scale 1-5)

colorfastness to light

ISO 105-B02

light 4-5 / dark 4-5 (scale 1-8)

AATCC 16.3: 40 hours

5 (scale 1-5)

seam slippage

ISO 13936 - 2

warp 4 mm / weft 3.5 mm

ASTM D4034

warp 39 lbs / weft 89 lbs

breaking strength

ASTM D5034

warp 186 lbs / weft 224 lbs

care





STANDARD
100

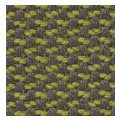
S10-0100
Hohenstein HTTI

lindau

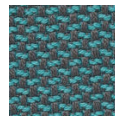
7028.01 - 7028.33



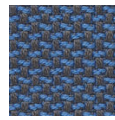
7028.01



7028.15



7028.13



7028.04



7028.09



7028.22



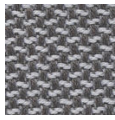
7028.19



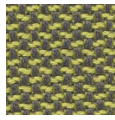
7028.20



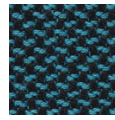
7028.26



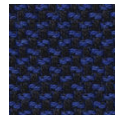
7028.02



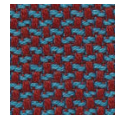
7028.14



7028.10



7028.08



7028.18



7028.21



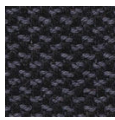
7028.23



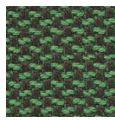
7028.32



7028.30



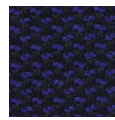
7028.03



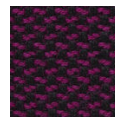
7028.12



7028.07



7028.11



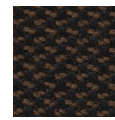
7028.31



7028.28



7028.24



7028.29



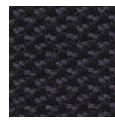
7028.33



7028.06



7028.05



7028.16



7028.17



7028.27



7028.25