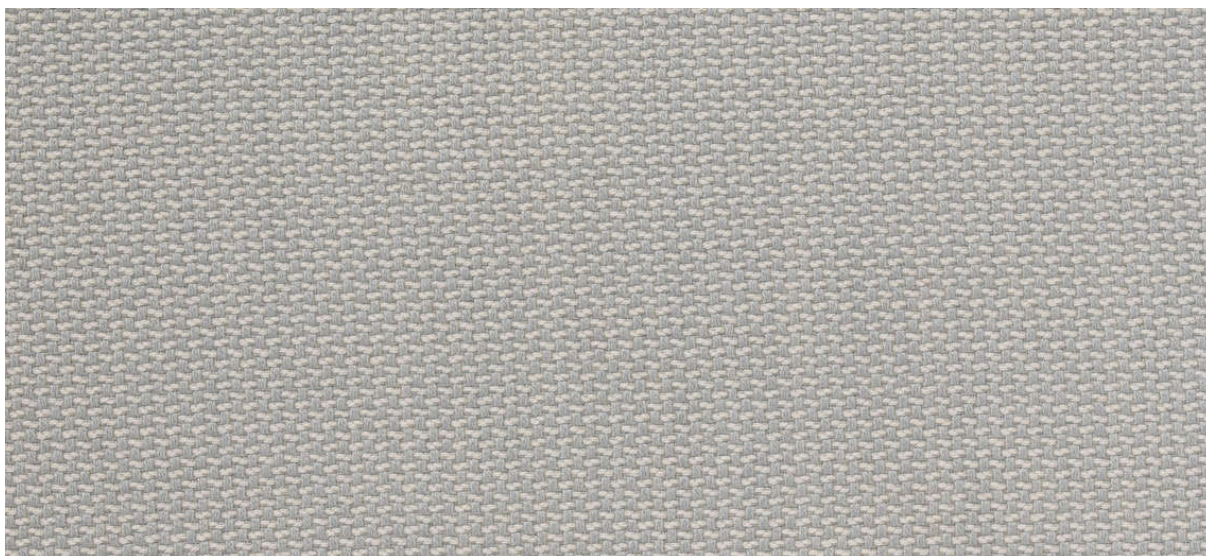


lindau

7028.01 - 7028.33



binder

upholstery

descripción

tela para tapicería de lana bicolor y reversible

composición

80% lana / 20% poliamida

ancho

± 140 cm, ± 55 inches

peso

± 536 gr/m¹, ± 17 oz/yd¹ fabrics

combustión retardada

EN 1021/1-2

BS 5852, crib 5

UNI 9175, classe 1 IM

Cal TB 117

NFPA 260, class 1

IMO 2010 FTP part 8

NF D 60-013 - AM18

resistencia al desgaste

ISO 12947-2

100.000 rubs martindale

ASTM D4157

45.000 double rubs wyzenbeek

pilling

ISO 12945-2

3 (escala 1-5)

ASTM D3511

2,5 (escala 1-5)

resistencia al frotamiento

ISO 105-X12

mojado 4 / seco 4-5 (escala 1-5)

AATCC 8

mojado 5 / seco 4.5 (escala 1-5)

insensibilidad a la luz

ISO 105-B02

claro 4-5 / oscuro 4-5 (escala 1-8)

AATCC 16.3: 40 hours

5 (escala 1-5)

resistencia al deslizamiento de costuras

ISO 13936 - 2

lizo 4 mm / trama 3.5 mm

ASTM D4034

lizo 39 lbs / trama 89 lbs

resistencia a la tensión

ASTM D5034

warp 186 lbs / weft 224 lbs

mantenimiento





STANDARD
100

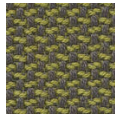
S10-0100
Hohenstein HTTI

lindau

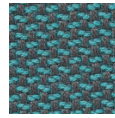
7028.01 - 7028.33



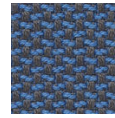
7028.01



7028.15



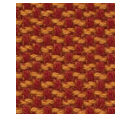
7028.13



7028.04



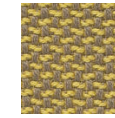
7028.09



7028.22



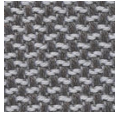
7028.19



7028.20



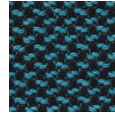
7028.26



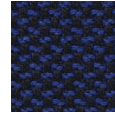
7028.02



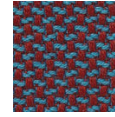
7028.14



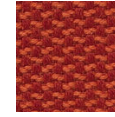
7028.10



7028.08



7028.18



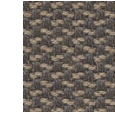
7028.21



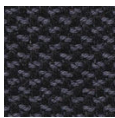
7028.23



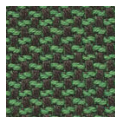
7028.32



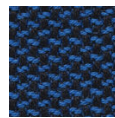
7028.30



7028.03



7028.12



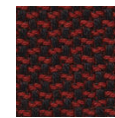
7028.07



7028.11



7028.31



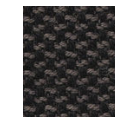
7028.28



7028.24



7028.29



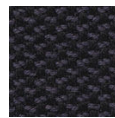
7028.33



7028.06



7028.05



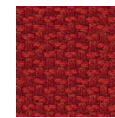
7028.16



7028.17



7028.27



7028.25