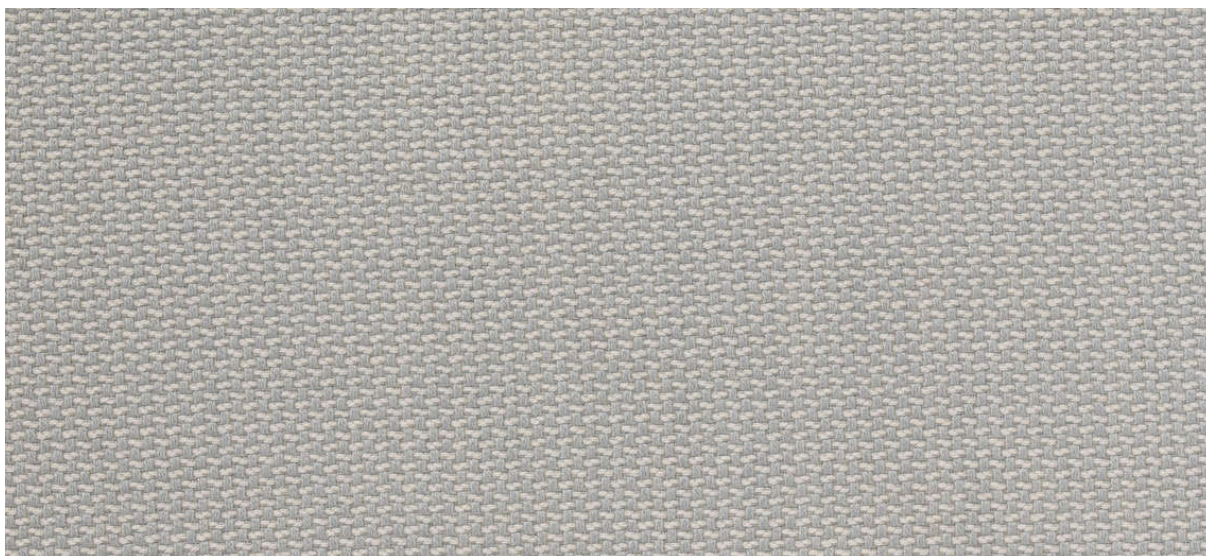


lindau

7028.01 - 7028.33



binder

upholstery

opis

**dwubarwna, wełniana tkanina obiciowa,
może być stosowana dwustronnie**

skład

80% wełna / 20% poliamid

szerokość

± 140 cm, ± 55 inches

gramatura

± 536 gr/m², ± 17 oz/yd² fabrics

odporność ogniowa

EN 1021/1-2

BS 5852, crib 5

UNI 9175, classe 1 IM

Cal TB 117

NFPA 260, class 1

IMO 2010 FTP part 8

NF D 60-013 - AM18

odporność na ścieranie

ISO 12947-2

100.000 rubs martindale

ASTM D4157

45.000 double rubs wyzenbeek

odporność na wrywanie włókien

ISO 12945-2

3 (skala 1-5)

ASTM D3511

2,5 (skala 1-5)

odporność na wycieranie

ISO 105-X12

mokre 4 / suche 4-5 (skala 1-5)

AATCC 8

mokre 5 / suche 4.5 (skala 1-5)

odporność na działanie światła

ISO 105-B02

jasny 4-5 / ciemny 4-5 (skala 1-8)

AATCC 16.3: 40 hours

5 (skala 1-5)

wytrzymałość szwów

ISO 13936 - 2

łańcuch 4 mm / wątek 3.5 mm

ASTM D4034

łańcuch 39 lbs / wątek 89 lbs

odporność na tarcie

ASTM D5034

warp 186 lbs / weft 224 lbs

codzienna dbałość o produkt





STANDARD
100

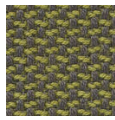
S10-0100
Hohenstein HTTI

lindau

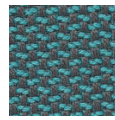
7028.01 - 7028.33



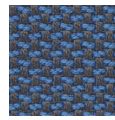
7028.01



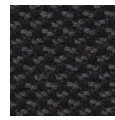
7028.15



7028.13



7028.04



7028.09



7028.22



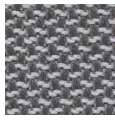
7028.19



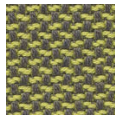
7028.20



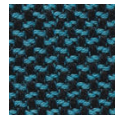
7028.26



7028.02



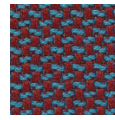
7028.14



7028.10



7028.08



7028.18



7028.21



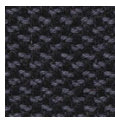
7028.23



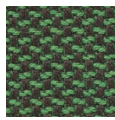
7028.32



7028.30



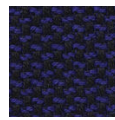
7028.03



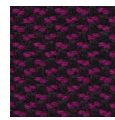
7028.12



7028.07



7028.11



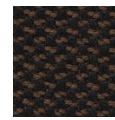
7028.31



7028.28



7028.24



7028.29



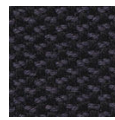
7028.33



7028.06



7028.05



7028.16



7028.17



7028.27



7028.25