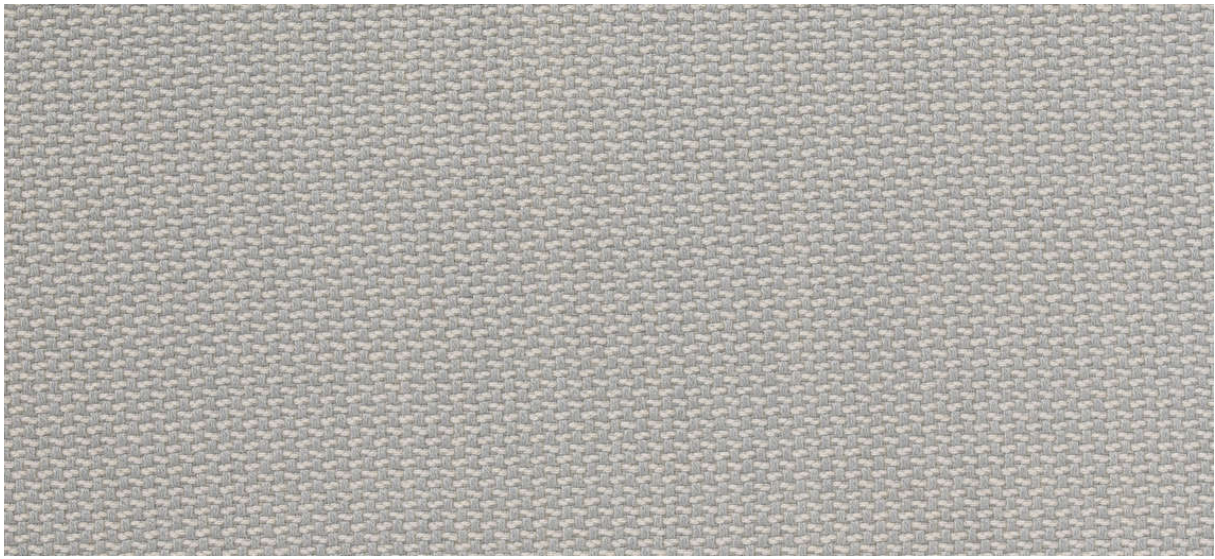


# lindau

7028.01 - 7028.33



## binder

upholstery

## 描述

可用于两侧的双色羊毛家具面料

## 组成

80%羊毛 / 20%聚酰胺

## 宽度

± 140 cm, ± 55 inches

## 重量

± 536 gr/m<sup>2</sup>, ± 17 oz/yd<sup>2</sup> fabrics

## 阻燃

EN 1021/1-2

BS 5852, crib 5

UNI 9175, classe 1 IM

Cal TB 117

NFPA 260, class 1

IMO 2010 FTP part 8

NF D 60-013 - AM18

## 耐磨性

ISO 12947-2

100,000 rubs martindale

ASTM D4157

45,000 double rubs wyzenbeek

## 起毛

ISO 12945-2

3 (由 1—5)

ASTM D3511

2,5 (由 1—5)

## 耐擦拭

ISO 105-X12

湿 4 / 干 4-5 (由 1—5)

AATCC 8

湿 5 / 干 4.5 (由 1—5)

## 耐褪色

ISO 105-B02

浅 4-5 / 深 4-5 (由 1—8)

AATCC 16,3: 40 hours

5 (由 1—5)

## 耐滑缝

ISO 13936 — 2

纵向收缩比 4 mm / 横向收缩比 3.5 mm

ASTM D4034

纵向收缩比 39 lbs / 横向收缩比 89 lbs

## 屈伸强度

ASTM D5034

warp 186 lbs / weft 224 lbs





STANDARD  
100

S10-0100  
Hohenstein HTTI

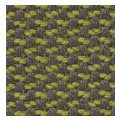
# lindau

7028.01 - 7028.33

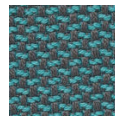
---



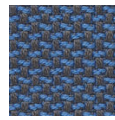
7028.01



7028.15



7028.13



7028.04



7028.09



7028.22



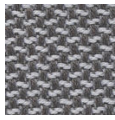
7028.19



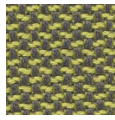
7028.20



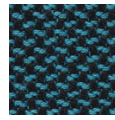
7028.26



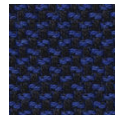
7028.02



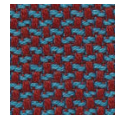
7028.14



7028.10



7028.08



7028.18



7028.21



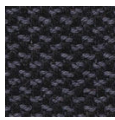
7028.23



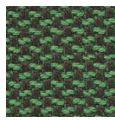
7028.32



7028.30



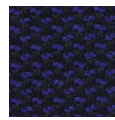
7028.03



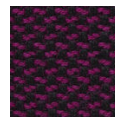
7028.12



7028.07



7028.11



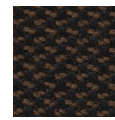
7028.31



7028.28



7028.24



7028.29



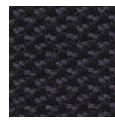
7028.33



7028.06



7028.05



7028.16



7028.17



7028.27



7028.25