

bowen

7030.01 - 7030.39



binder

upholstery

opis

wetniany materiał obiciowy o mieszanych kolorach

skład

92% wełna / 8% poliamid

szerokość

± 140 cm, ± 55 inches

gramatura

± 530 gr/m², ± 17 oz/yd² fabrics

odporność ogniowa

EN 1021/1-2

BS 5852, crib 5

UNI 9175, classe 1 IM

Cal TB 117-2013

NFPA 260, class 1

NF D 60-013 - AM18

IMO 2010 FTP part 8

odporność na ścieranie

ISO 12947-2

100.000 rubs martindale

ASTM D4157

35.000 double rubs wyzenbeek

odporność na wrywanie włókien

ISO 12945-2

4 (skala 1-5)

ASTM D3511

5 (skala 1-5)

odporność na wycieranie

ISO 105-X12

mokre 4-5 / suche 4-5 (skala 1-5)

AATCC 8

mokre 5 / suche 5 (skala 1-5)

odporność na działanie światła

ISO 105-B02

4 - 5 (escala 1-8)

AATCC 16.3

5 (skala 1-5)

wytrzymałość szwów

ISO 13936 - 2

łańcuch 5 mm / wątek 4.5 mm

ASTM D4034

łańcuch 120 lbs / wątek 87 lbs

odporność na tarcie

ASTM D5034

łańcuch 212 lbs / wątek 191 lbs

codzienna dbałość o produkt



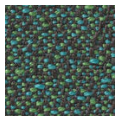


STANDARD
100

S10-0100
Hohenstein HTTI

bowen

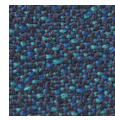
7030.01 - 7030.39



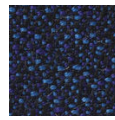
7030.14



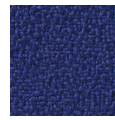
7030.13



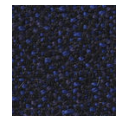
7030.10



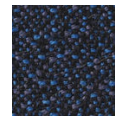
7030.06



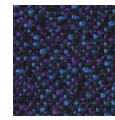
7030.05



7030.09



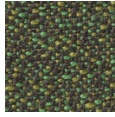
7030.12



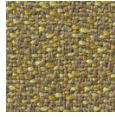
7030.01



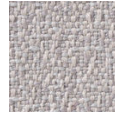
7030.02



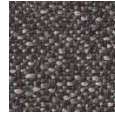
7030.15



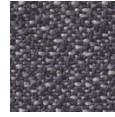
7030.16



7030.17



7030.04



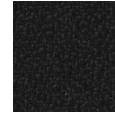
7030.03



7030.08



7030.11



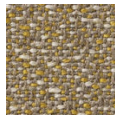
7030.07



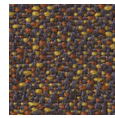
7030.21



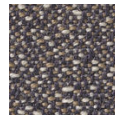
7030.35



7030.32



7030.34



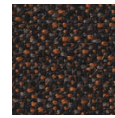
7030.20



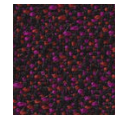
7030.24



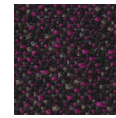
7030.36



7030.31



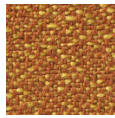
7030.30



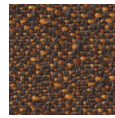
7030.27



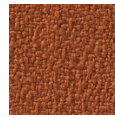
7030.33



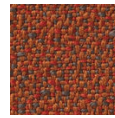
7030.19



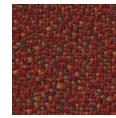
7030.29



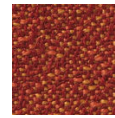
7030.23



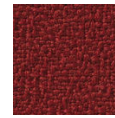
7030.26



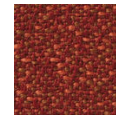
7030.28



7030.18



7030.25



7030.22



7030.37



7030.39



7030.38