

# malta

7037.01 - 7037.21



binder

**upholstery**

**vinyl**

descrizione

**punti chiari su un font scuro**

composizione

**spalmatura vinilica spugnosa, tessuto in cotone e poliestere**

altezza

**± 137-140 cm, ± 54-55 inches**

peso

**tessuto: ± 110 gr/m<sup>2</sup>, ± 5 oz/yd<sup>1</sup>**

**spalmato: ± 690 gr/m<sup>2</sup>, ± 31 oz/yd<sup>1</sup>**

spessore

**1.1 mm, 0.04 inches**

resistenza al fuoco

**EN 1021/1-2**

**BS 5852, crib 5**

**NF P 92/503 - 507, M2**

**NF D60-013 (AM 18)**

**DIN 4102, B2**

**UNI 9175, classe 1 IM**

**Cal TB 117**

**NFPA 260, class 1**

**IMO 2010 FTP part 8**

resistenza all'abrasione

**ISO 12947-2**

> 300.000 rubs martindale

**ASTM D4157**

100.000 double rubs wyzenbeek

solidità allo sfregamento

**ISO 105-X12**

wet 5 / dry 5 (scale 1-5)

**AATCC 8**

wet 5 / dry 5 (scale 1-5)

resistenza alla luce

**ISO 105-B02**

7 (scale 1-8)

**ASTM D4329: 150 hours**

4 (scale 1-5)

resistenza a sangue, urina, sudore e sebo cutaneo

**EN 12720**

5 (scale 1-5)

resistenza alla trazione

**ISO 1421**

length 470 N / width 313 N

**ASTM D2261**

length 7.3 lbs / width 9.2 lbs

resistenza alla flessione

**ISO 7854**

400.000 cycles

aderenza del rivestimento

**ASTM D751**

length 8.3 lbf / width 5.2 lbf

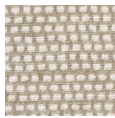


**vinyl**   
COMMITTED TO  
SUSTAINABLE DEVELOPMENT

# malta

7037.01 - 7037.21

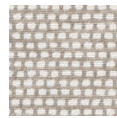
---



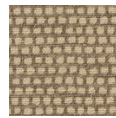
7037.01



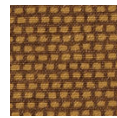
7037.02



7037.03



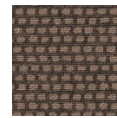
7037.04



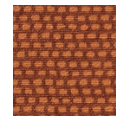
7037.05



7037.06



7037.07



7037.08



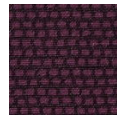
7037.09



7037.10



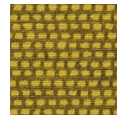
7037.11



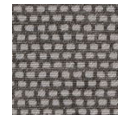
7037.12



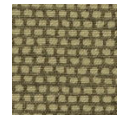
7037.13



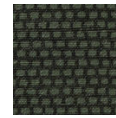
7037.14



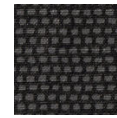
7037.15



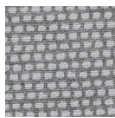
7037.16



7037.17



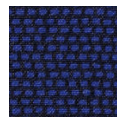
7037.18



7037.19



7037.20



7037.21