

# cyprus

7038.01 - 7038.16



binder

**upholstery**  
**vinyl**

descripción

**imagen de tejido bicolor abierto sobre superficie más oscura**

composición

**espuma de vinilo, soporte de algodón/poliéster**

ancho

**± 137-140 cm, ± 54-55 inches**

peso

**backing: ± 110 gr/m<sup>2</sup>, ± 5 oz/yd<sup>1</sup>**  
**coating: ± 690 gr/m<sup>2</sup>, ± 31 oz/yd<sup>1</sup>**

espesor

**1.1 mm, 0.04 inches**

combustión retardada

**EN 1021/1-2**  
**BS 5852, crib 5**  
**NF P 92/503 - 507, M2**  
**NF D60-013 (AM 18)**  
**DIN 4102, B2**  
**UNI 9175, classe 1 IM**  
**Cal TB 117**  
**NFPA 260, class 1**  
**IMO 2010 FTP part 8**

resistencia al desgaste

**ISO 12947-2**

> 300.000 rubs martindale

**ASTM D4157**

100.000 double rubs wyzenbeek

resistencia al frotamiento

**ISO 105-X12**

wet 5 / dry 5 (scale 1-5)

**AATCC 8**

wet 5 / dry 5 (scale 1-5)

insensibilidad a la luz

**ISO 105-B02**

7 (scale 1-8)

**ASTM D4329: 150 hours**

4 (scale 1-5)

resistencia a la sangre, orina, sudor y grasa de la piel

**EN 12720**

5 (scale 1-5)

resistencia a la tensión

**ISO 1421**

length 470 N / width 313 N

**ASTM D2261**

length 7.3 lbs / width 9.2 lbs

flexibles

**ISO 7854**

400.000 cycles

adhesión al revestimiento

**ASTM D751**

length 8.3 lbf / width 5.2 lbf

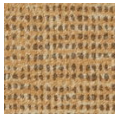


**vinyl**   
COMMITTED TO  
SUSTAINABLE DEVELOPMENT

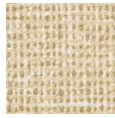
# cyprus

7038.01 - 7038.16

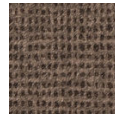
---



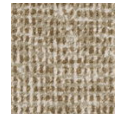
7038.01



7038.02



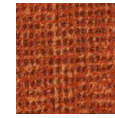
7038.03



7038.04



7038.05



7038.06



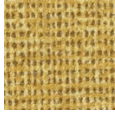
7038.07



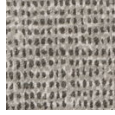
7038.08



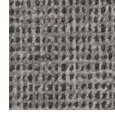
7038.09



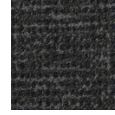
7038.10



7038.11



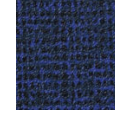
7038.12



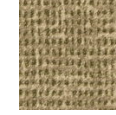
7038.13



7038.14



7038.15



7038.16