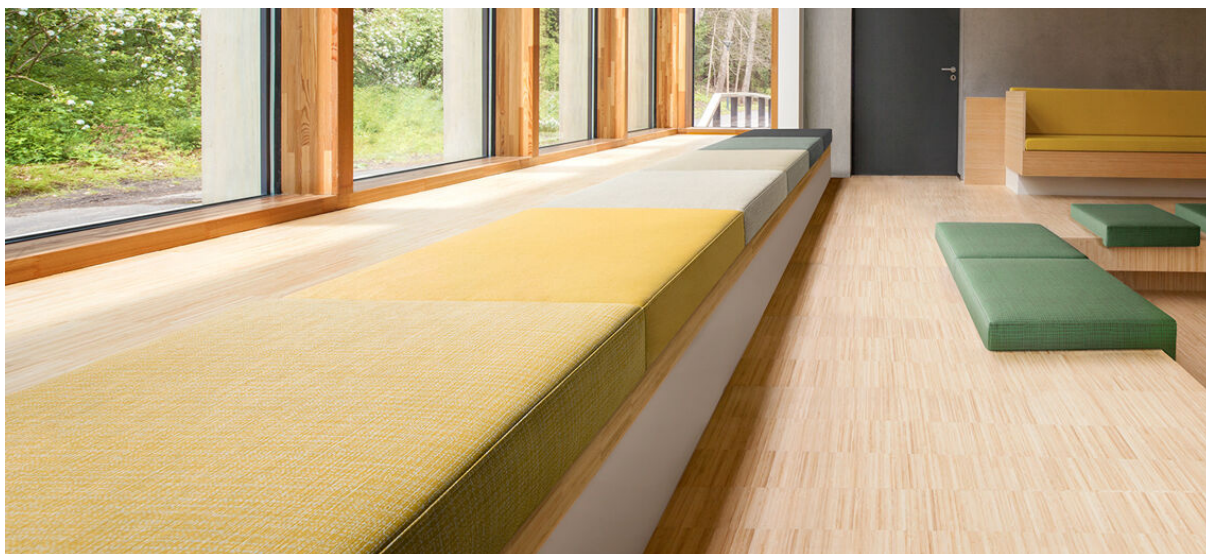


scott

7045.01 - 7045.18



binder

upholstery
vinyl

descrição

imagem global formada por pequenas linhas horizontais e verticais

composição

espuma vinílica, base de malha de algodão/poliéster

largura

± 137-140 cm, ± 54-55 inches

gramagem

backing: ± 110 gr/m², ± 5 oz/yd¹
coating: ± 690 gr/m², ± 31 oz/yd¹

espessura

1.1 mm, 0.04 inches

resistência ao fogo

EN 1021/1-2
BS 5852, crib 5
NF P 92/503 - 507, M2
NF D60-013 (AM 18)
DIN 4102, B2
UNI 9175, classe 1 IM
Cal TB 117
NFPA 260, class 1
IMO 2010 FTP part 8

desgaste à abrasão

ISO 12947-2

> 300.000 rubs martindale

ASTM D4157

100.000 double rubs wyzenbeek

resistência à fricção

ISO 105-X12

wet 5 / dry 5 (scale 1-5)

AATCC 8

wet 5 / dry 5 (scale 1-5)

resistência à luz

ISO 105-B02

7 (scale 1-8)

ASTM D4329: 150 hours

4 (scale 1-5)

resistência ao sangue, urina, suor e gordura da pele

EN 12720

5 (scale 1-5)

resistência à tensão

ISO 1421

length 470 N / width 313 N

ASTM D2261

length 7.3 lbs / width 9.2 lbs

flexíveis

ISO 7854

400.000 cycles

aderência ao revestimento

ASTM D751

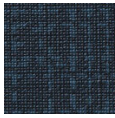
length 8.3 lbf / width 5.2 lbf



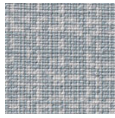
vinyl 
COMMITTED TO
SUSTAINABLE DEVELOPMENT

scott

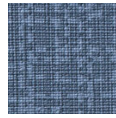
7045.01 - 7045.18



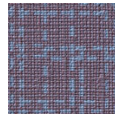
7045.01



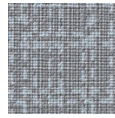
7045.02



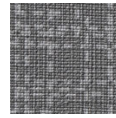
7045.03



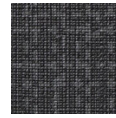
7045.04



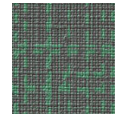
7045.05



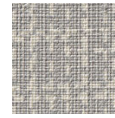
7045.06



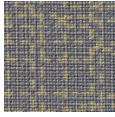
7045.07



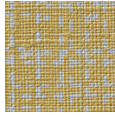
7045.08



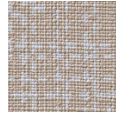
7045.09



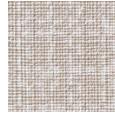
7045.10



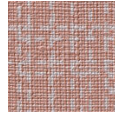
7045.11



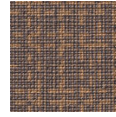
7045.12



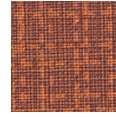
7045.13



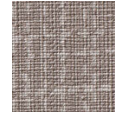
7045.14



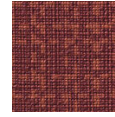
7045.15



7045.16



7045.17



7045.18