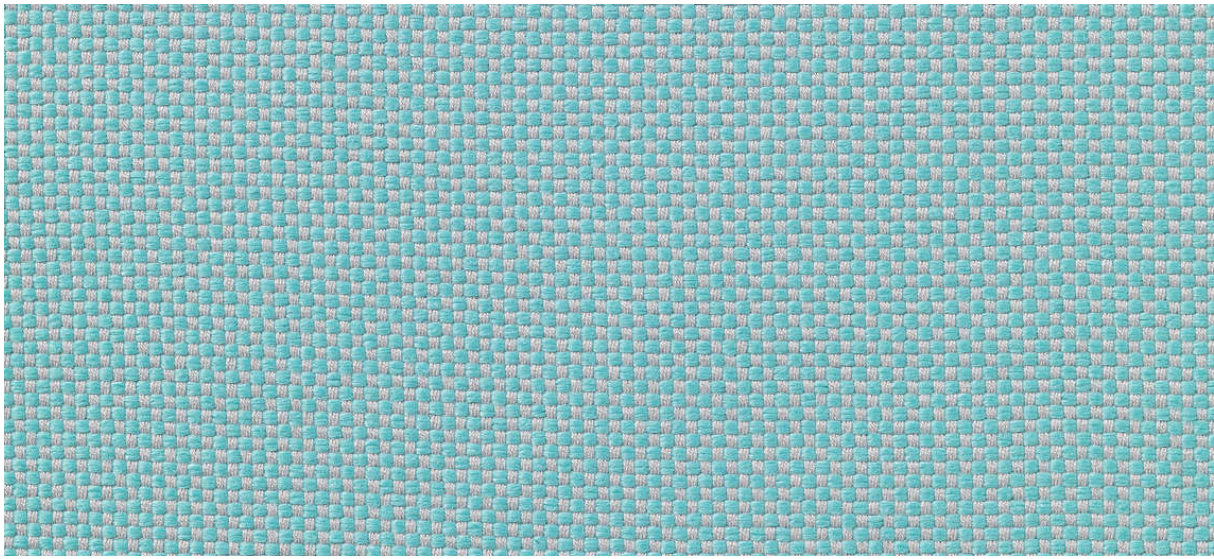


# samar

7052.01 - 7052.51



## Kollektion

**upholstery**

## Beschreibung

**Gewebemuster**

## Zusammensetzung

**73% recycled polyester FR / 27% polyester FR**

## Breite

**± 140 cm, ± 55 inches**

## Gewicht

**± 663 gr/m<sup>1</sup>, ± 21 oz/yd<sup>1</sup> fabrics**

## Brandschutzklasse

**EN 1021/1-2**

**BS 5852, crib 5**

**NF P 92/503-507, M1**

**DIN 4102, B1**

**IMO 2010 FTP part 8**

**UNI 9175, classe 1 IM**

**Cal TB 117**

**NFPA 260, class 1**

## Abrieb

**ISO 12947-2**

>50.000 rubs martindale

**ASTM D4157**

42.000 double rubs wyzenbeek

## Pillingbildung

**ISO 12945-2**

4-5 (skala 1-5)

**ASTM D3511**

5 (skala 1-5)

## Reibechtheit

**ISO 105-X12**

nass 4-5 / trocken 4-5 (skala 1-5)

**AATCC 8**

nass 5 / trocken 5 (skala 1-5)

## Lichtechtheit

**ISO 105-B02**

6 (skala 1-8)

**AATCC 16.3: 40 hours**

4 (skala 1-5)

## Nahtschibewiderstand

**ISO 13936 - 2**

Kette 3 mm / Schuss 2 mm

**ASTM D4034**

Kette 99 lbf / Schuss 81 lbf

## Reißfestigkeit

**ASTM D5034**

warp 31.6 lbs / weft 60.9 lbs

## Pflege



**Schrumpfwerte: Kette -1.6% / Schuss -1%**



**Schrumpfwerte: Kette -3% / Schuss -1.4%**



STANDARD  
100

S07-0023  
Hohenstein HTTI

# samar

7052.01 - 7052.51

---



7052.01



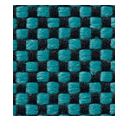
7052.02



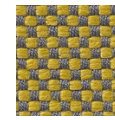
7052.03



7052.04



7052.05



7052.06



7052.07



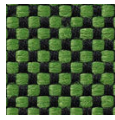
7052.08



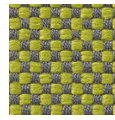
7052.09



7052.10



7052.11



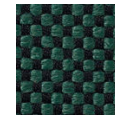
7052.12



7052.13



7052.14



7052.15



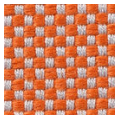
7052.16



7052.17



7052.18



7052.19



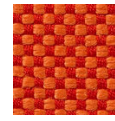
7052.20



7052.21



7052.22



7052.23



7052.24



7052.25



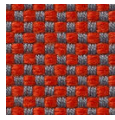
7052.26



7052.27



7052.28



7052.29



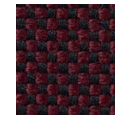
7052.30



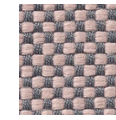
7052.31



7052.32



7052.33



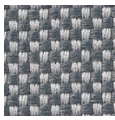
7052.34



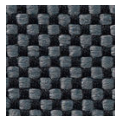
7052.35



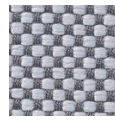
7052.36



7052.37



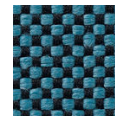
7052.38



7052.39



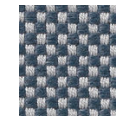
7052.40



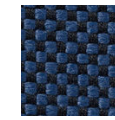
7052.41



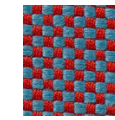
7052.42



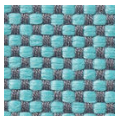
7052.43



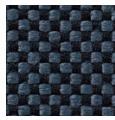
7052.44



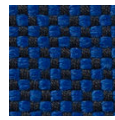
7052.45



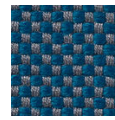
7052.46



7052.47



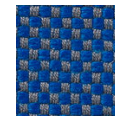
7052.48



7052.49



7052.50



7052.51