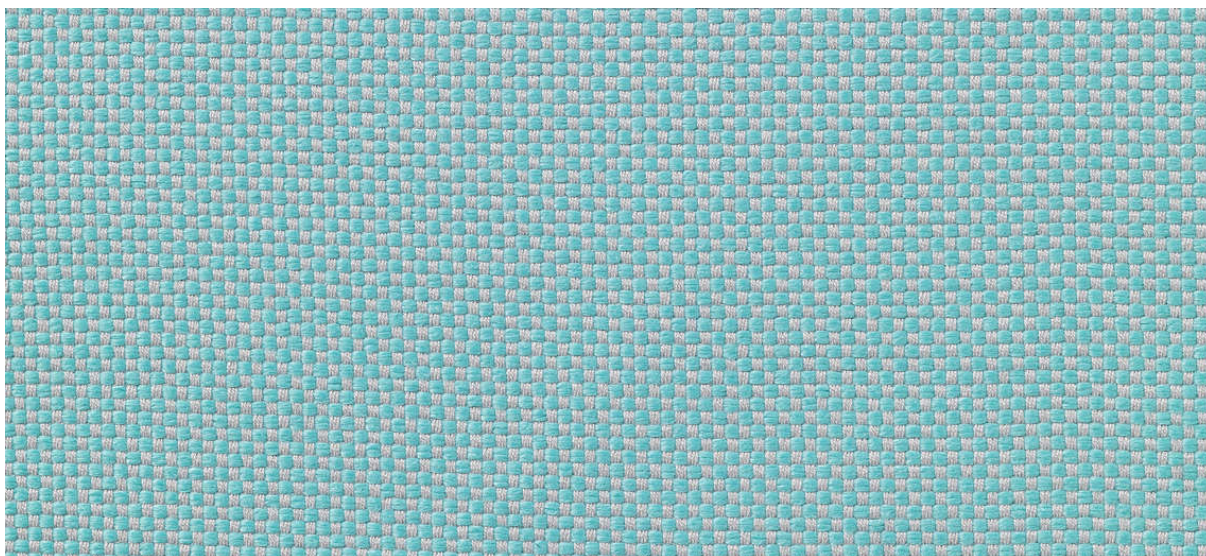


samar

7052.01 - 7052.51



binder

upholstery

description

blocs de tissu

composition

73% recycled polyester FR / 27% polyester FR

largeur

± 140 cm, ± 55 inches

poids

± 663 gr/m¹, ± 21 oz/yd¹ fabrics

non feu

EN 1021/1-2

BS 5852, crib 5

NF P 92/503-507, M1

DIN 4102, B1

IMO 2010 FTP part 8

UNI 9175, classe 1 IM

Cal TB 117

NFPA 260, class 1

résistance à l'abrasion

ISO 12947-2

>50.000 rubs martindale

ASTM D4157

42.000 double rubs wyzenbeek

boulochage

ISO 12945-2

4-5 (échelle 1-5)

ASTM D3511

5 (échelle 1-5)

résistance au frottement

ISO 105-X12

humide 4-5 / sèche 4-5 (échelle 1-5)

AATCC 8

humide 5 / sèche 5 (échelle 1-5)

solidité lumière

ISO 105-B02

6 (échelle 1-8)

AATCC 16.3: 40 hours

4 (échelle 1-5)

résistance au glissement à la couture

ISO 13936 - 2

chaîne 3 mm / trame 2 mm

ASTM D4034

chaîne 99 lbf / trame 81 lbf

résistance à la traction

ASTM D5034

warp 31.6 lbs / weft 60.9 lbs

entretien



rétrécissement: chaîne -1.6% / trame -1%



rétrécissement: chaîne -3% / trame -1.4%



STANDARD
100
S07-0023
Hohenstein HTTI

samar

7052.01 - 7052.51



7052.01



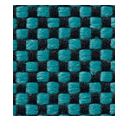
7052.02



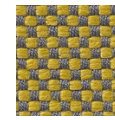
7052.03



7052.04



7052.05



7052.06



7052.07



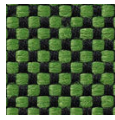
7052.08



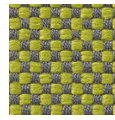
7052.09



7052.10



7052.11



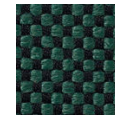
7052.12



7052.13



7052.14



7052.15



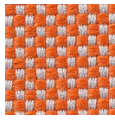
7052.16



7052.17



7052.18



7052.19



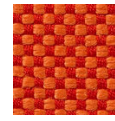
7052.20



7052.21



7052.22



7052.23



7052.24



7052.25



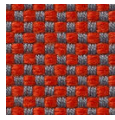
7052.26



7052.27



7052.28



7052.29



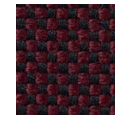
7052.30



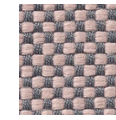
7052.31



7052.32



7052.33



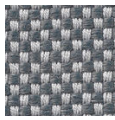
7052.34



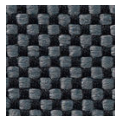
7052.35



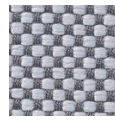
7052.36



7052.37



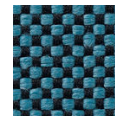
7052.38



7052.39



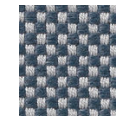
7052.40



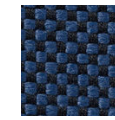
7052.41



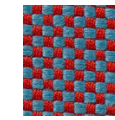
7052.42



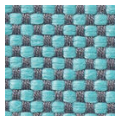
7052.43



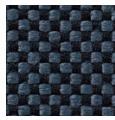
7052.44



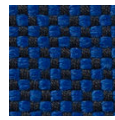
7052.45



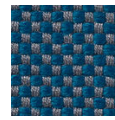
7052.46



7052.47



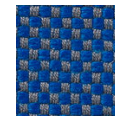
7052.48



7052.49



7052.50



7052.51