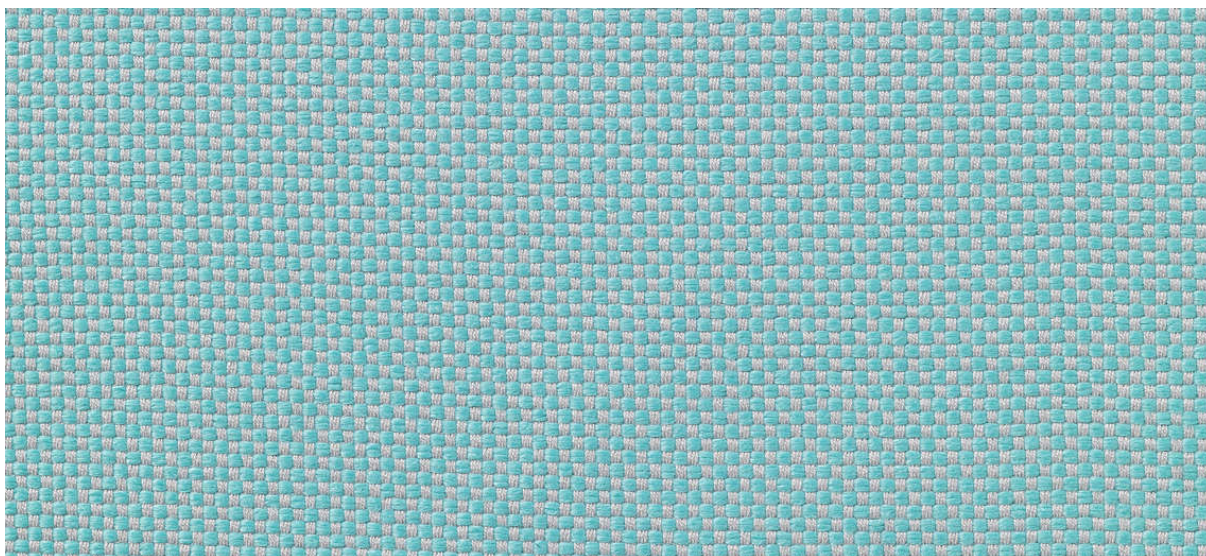


samar

7052.01 - 7052.51



binder

upholstery

opis

tkanina o motywie blokowym

skład

73% recycled polyester FR / 27% polyester FR

szerokość

± 140 cm, ± 55 inches

gramatura

± 663 gr/m¹, ± 21 oz/yd¹ fabrics

odporność ogniowa

EN 1021/1-2

BS 5852, crib 5

NF P 92/503-507, M1

DIN 4102, B1

IMO 2010 FTP part 8

UNI 9175, classe 1 IM

Cal TB 117

NFPA 260, class 1

odporność na ścieranie

ISO 12947-2

>50.000 rubs martindale

ASTM D4157

42.000 double rubs wyzenbeek

odporność na wrywanie włókien

ISO 12945-2

4-5 (skala 1-5)

ASTM D3511

5 (skala 1-5)

odporność na wycieranie

ISO 105-X12

mokre 4-5 / suche 4-5 (skala 1-5)

AATCC 8

mokre 5 / suche 5 (skala 1-5)

odporność na działanie światła

ISO 105-B02

6 (skala 1-8)

AATCC 16.3: 40 hours

4 (skala 1-5)

wytrzymałość szwów

ISO 13936 - 2

łańcuch 3 mm / wątek 2 mm

ASTM D4034

łańcuch 99 lbf / wątek 81 lbf

odporność na tarcie

ASTM D5034

warp 31.6 lbs / weft 60.9 lbs

codzienna dbałość o produkt



kurczliwość: łańcuch -1.6% / wątek -1%



kurczliwość: łańcuch -3% / wątek -1.4%



STANDARD
100

S07-0023
Hohenstein HTTI

samar

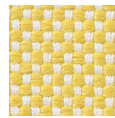
7052.01 - 7052.51



7052.01



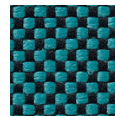
7052.02



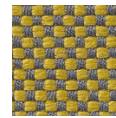
7052.03



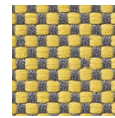
7052.04



7052.05



7052.06



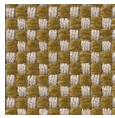
7052.07



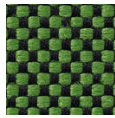
7052.08



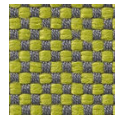
7052.09



7052.10



7052.11



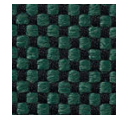
7052.12



7052.13



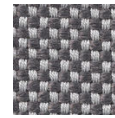
7052.14



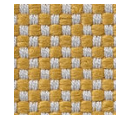
7052.15



7052.16



7052.17



7052.18



7052.19



7052.20



7052.21



7052.22



7052.23



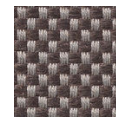
7052.24



7052.25



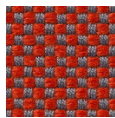
7052.26



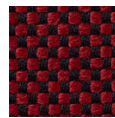
7052.27



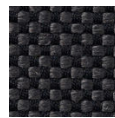
7052.28



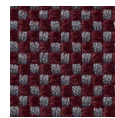
7052.29



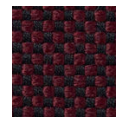
7052.30



7052.31



7052.32



7052.33



7052.34



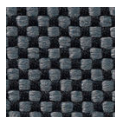
7052.35



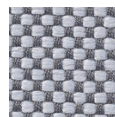
7052.36



7052.37



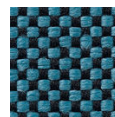
7052.38



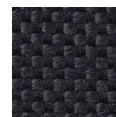
7052.39



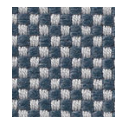
7052.40



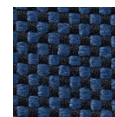
7052.41



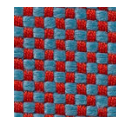
7052.42



7052.43



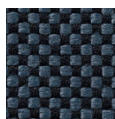
7052.44



7052.45



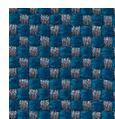
7052.46



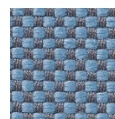
7052.47



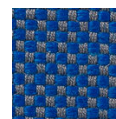
7052.48



7052.49



7052.50



7052.51