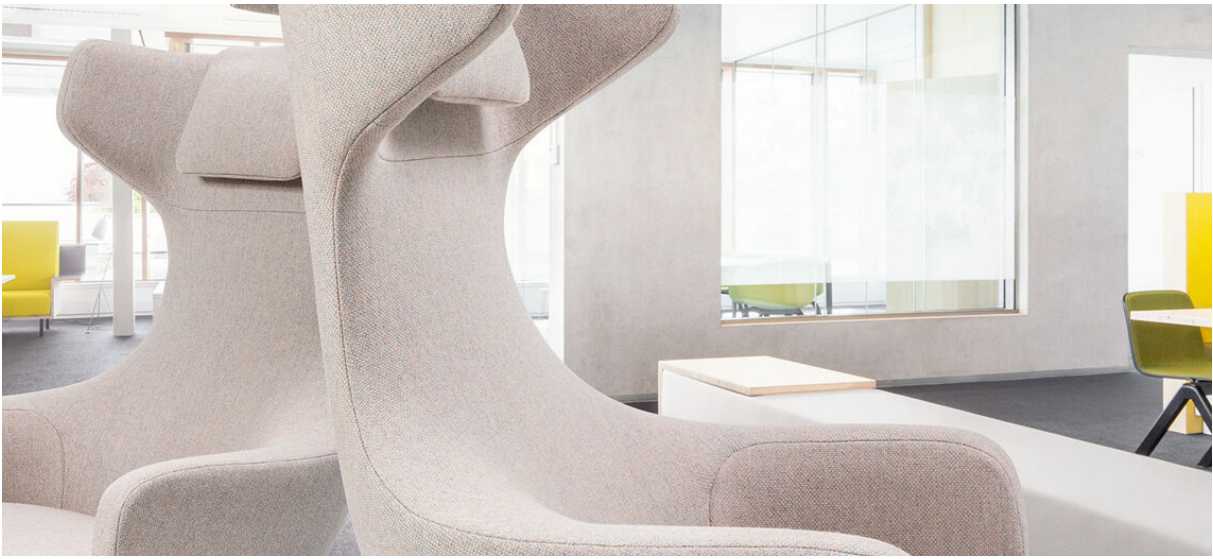


# lamu

7051.01 - 7051.30



## Kollektion

**upholstery**

## Beschreibung

**Gefilzte Wollqualität mit Struktur**

## Zusammensetzung

**75% post-consumer recycled Wolle / 25% Polyester**

## Breite

**± 150 cm, ± 59 inches**

## Gewicht

**± 660 gr/m<sup>1</sup>, ± 21 oz/yd<sup>1</sup> fabrics**

## Brandschutzklasse

**EN 1021/1-2**

**BS 5852, crib 5**

**NF P 92/503-507, M2**

**DIN 4102, B2**

**IMO 2010 FTP part 8**

**UNI 9175, classe 1 IM**

**Cal TB 117**

**NFPA 260, class 1**

## Abrieb

**ISO 12947-2**

>100.000 rubs martindale

**ASTM D4157**

>30.000 double rubs wyzenbeek

## Pillingbildung

**ISO 12945-2**

4 (skala 1-5)

**ASTM D3511**

3 (skala 1-5)

## Reibechtheit

**ISO 105-X12**

nass 5 / trocken 5 (skala 1-5)

**AATCC 8**

nass 5 / trocken 5 (skala 1-5)

## Lichtechtheit

**ISO 105-B02**

5 (skala 1-8)

**AATCC 16.3: 40 hours**

5 (skala 1-5)

## Nahtschibewiderstand

**ISO 13936 - 2**

Kette 3.5 mm / Schuss 3.5 mm

**ASTM D4034**

Kette 26 lbf / Schuss 26 lbf

## Reißfestigkeit

**ASTM D5034**

warp 73 lbs / weft 76 lbs

## Pflege





STANDARD  
100

S19-3058  
Hohenstein HTTI

# lamu

7051.01 - 7051.30

---



7051.01



7051.02



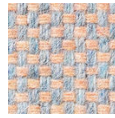
7051.03



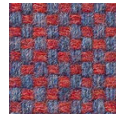
7051.04



7051.05



7051.06



7051.07



7051.08



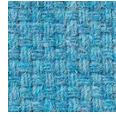
7051.09



7051.10



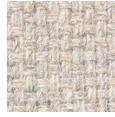
7051.11



7051.12



7051.13



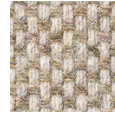
7051.14



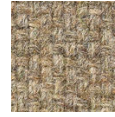
7051.15



7051.16



7051.17



7051.18



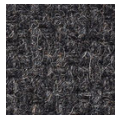
7051.19



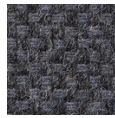
7051.20



7051.21



7051.22



7051.23



7051.24



7051.25



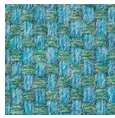
7051.26



7051.27



7051.28



7051.29



7051.30