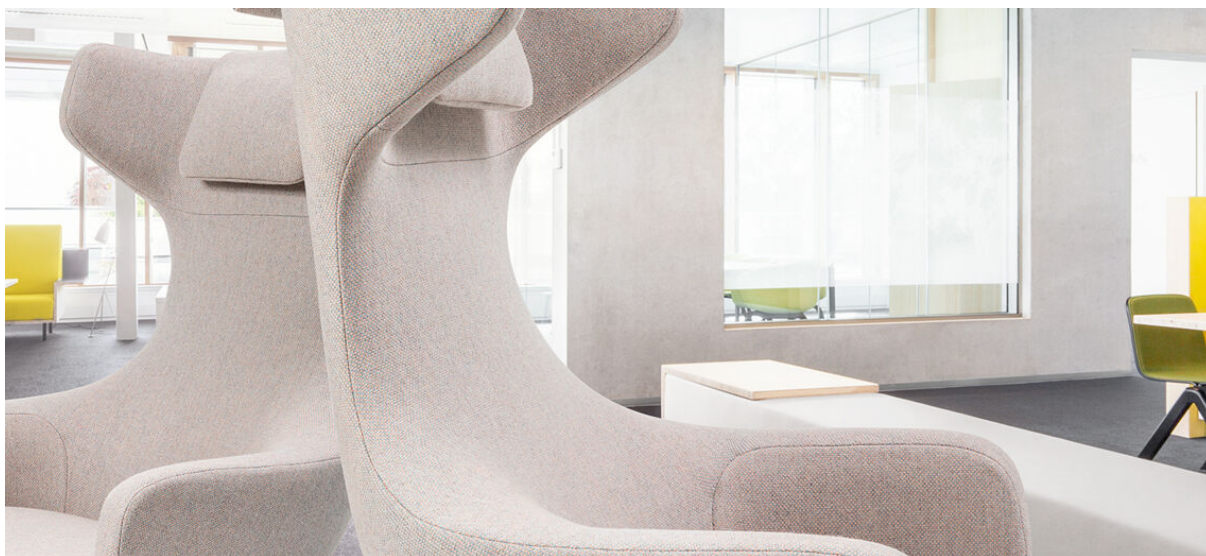


lamu

7051.01 - 7051.30



binder

upholstery

descripción

textura de fieltro con calidad de lana

composición

75% post-consumer recycled lana / 25% poliéster

ancho

± 150 cm, ± 59 inches

peso

± 660 gr/m¹, ± 21 oz/yd¹ fabrics

combustión retardada

EN 1021/1-2

BS 5852, crib 5

NF P 92/503-507, M2

DIN 4102, B2

IMO 2010 FTP part 8

UNI 9175, classe 1 IM

Cal TB 117

NFPA 260, class 1

resistencia al desgaste

ISO 12947-2

>100.000 rubs martindale

ASTM D4157

>30.000 double rubs wyzenbeek

pilling

ISO 12945-2

4 (escala 1-5)

ASTM D3511

3 (escala 1-5)

resistencia al frotamiento

ISO 105-X12

mojado 5 / seco 5 (escala 1-5)

AATCC 8

mojado 5 / seco 5 (escala 1-5)

insensibilidad a la luz

ISO 105-B02

5 (escala 1-8)

AATCC 16.3: 40 hours

5 (escala 1-5)

resistencia al deslizamiento de costuras

ISO 13936 - 2

lizo 3.5 mm / trama 3.5 mm

ASTM D4034

lizo 26 lbf / trama 26 lbf

resistencia a la tensión

ASTM D5034

warp 73 lbs / weft 76 lbs

mantenimiento





STANDARD
100

S19-3058
Hohenstein HTTI

lamu

7051.01 - 7051.30



7051.01



7051.02



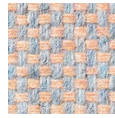
7051.03



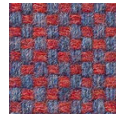
7051.04



7051.05



7051.06



7051.07



7051.08



7051.09



7051.10



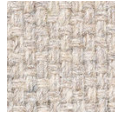
7051.11



7051.12



7051.13



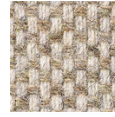
7051.14



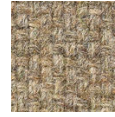
7051.15



7051.16



7051.17



7051.18



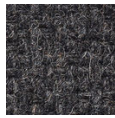
7051.19



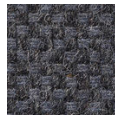
7051.20



7051.21



7051.22



7051.23



7051.24



7051.25



7051.26



7051.27



7051.28



7051.29



7051.30