

hestan

7035.01 - 7035.30



binder

upholstery

描述

粗线条的半无规则编织纹

组成

> 37% recycled polyester FR / < 63% polyester FR

宽度

± 140 cm, ± 55 inches

重量

± 570 gr/m², ± 18 oz/yd² fabrics

阻燃

EN 1021/ 1—2

BS 5852, crib 5

NF P 92 / 503 — 507, M1

DIN 4102, B1

IMO 2010 FTP part 8

UNI 9175, classe 1 IM

Cal TB 117

耐磨性

ISO 12947—2

60,000 rubs martindale

ASTM D4157

100,000 double rubs wyzenbeek

起毛

ISO 12945-2

4-5 (由 1—5)

ASTM D3511

4-5 (由 1—5)

耐擦拭

ISO 105—X12

湿 4-5 / 干 4-5 (由 1—5)

AATCC 8

湿 5 / 干 5 (由 1—5)

耐褪色

ISO 105—B02

6 (由 1—8)

AATCC 16,3: 40 hours

5 (由 1—5)

耐滑缝

ISO 13936 — 2

纵向收缩比 2.7 mm / 横向收缩比 2.7 mm

ASTM D4034

纵向收缩比 83 lbf / 横向收缩比 91 lbf

屈伸强度

ASTM D5034

warp 353 lbs / weft 377 lbs



收缩□ : 纵向收缩比 -1.5% / 横向收缩比 -1.5%



收缩□ : 纵向收缩比 -2.9% / 横向收缩比 -3.0%



STANDARD
100

S07-0023
Hohenstein HTTI

hestan

7035.01 - 7035.30



7035.01



7035.02



7035.03



7035.04



7035.05



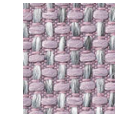
7035.06



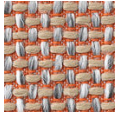
7035.07



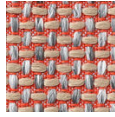
7035.08



7035.09



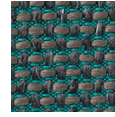
7035.10



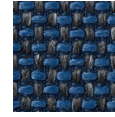
7035.11



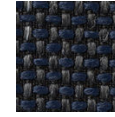
7035.12



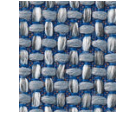
7035.13



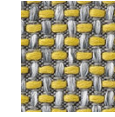
7035.14



7035.15



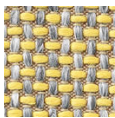
7035.16



7035.17



7035.18



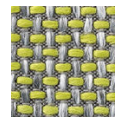
7035.19



7035.20



7035.21



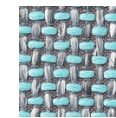
7035.22



7035.23



7035.24



7035.25



7035.26



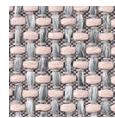
7035.27



7035.28



7035.29



7035.30