

fuga

7047.01 - 7047.26



Kollektion

upholstery

Beschreibung

Chenille-Gewebe in topaktuellen Farbtönen

Zusammensetzung

79% recycled polyester FR / 21% polyester FR

Breite

± 135 cm, ± 53 inches

Gewicht

± 807 gr/m¹, ± 26 oz/yd¹ fabrics

Brandschutzklasse

EN 1021/ 1- 2

BS 5852, crib 5

NF P 92 / 503 - 507, M1

DIN 4102, B1

IMO 2010 FTP part 8

UNI 9175, classe 1 IM

Cal TB 117

NFPA 260, class 1

Abrieb

ISO 12947-2

75.000 rubs martindale

ASTM D4157

40.000 double rubs wyzenbeek

Pillingbildung

ISO 12945-2

4-5 (skala 1-5)

ASTM D3511

5 (skala 1-5)

Reibechtheit

ISO 105-X12

nass 4-5 / trocken 4-5 (skala 1-5)

AATCC 8

nass 5 / trocken 5 (skala 1-5)

Lichtechtheit

ISO 105-B02

6-7 (skala 1-8)

AATCC 16.3: 40 hours

5 (skala 1-5)

Nahtschibewiderstand

ISO 13936-2

Kette 4.7 mm / Schuss 3 mm

ASTM D4034

Kette 41 lbf / Schuss 100 lbf

Reißfestigkeit

ASTM D5034

warp 167 lbs / weft 378 lbs

Pflege



Schrumpfwerte: Kette -1.6% / Schuss -1.6%



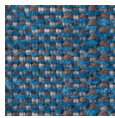
Schrumpfwerte: Kette -1.0% / Schuss -3.1%



STANDARD
100
S07-0023
Hohenstein HTTI

fuga

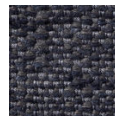
7047.01 - 7047.26



7047.01



7047.02



7047.03



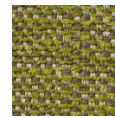
7047.04



7047.05



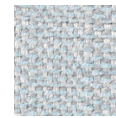
7047.06



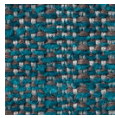
7047.07



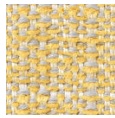
7047.08



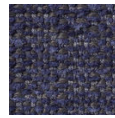
7047.09



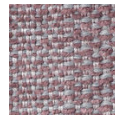
7047.10



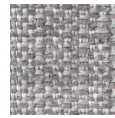
7047.11



7047.12



7047.13



7047.14



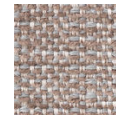
7047.15



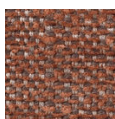
7047.16



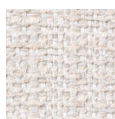
7047.17



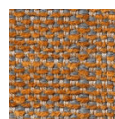
7047.18



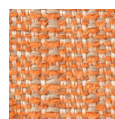
7047.19



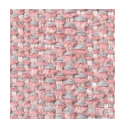
7047.20



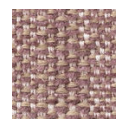
7047.21



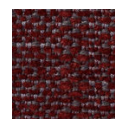
7047.22



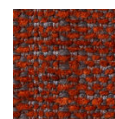
7047.23



7047.24



7047.25



7047.26