

# fuga

7047.01 - 7047.26



binder

**upholstery**

description

**chenille tissée bicolore en couleurs contemporaines**

composition

**79% recycled polyester FR / 21% polyester FR**

largeur

**± 135 cm, ± 53 inches**

poids

**± 807 gr/m<sup>1</sup>, ± 26 oz/yd<sup>1</sup> fabrics**

non feu

**EN 1021/ 1- 2**

**BS 5852, crib 5**

**NF P 92 / 503 - 507, M1**

**DIN 4102, B1**

**IMO 2010 FTP part 8**

**UNI 9175, classe 1 IM**

**Cal TB 117**

**NFPA 260, class 1**

résistance à l'abrasion

**ISO 12947-2**

75.000 rubs martindale

**ASTM D4157**

40.000 double rubs wyzenbeek

boulochage

**ISO 12945-2**

4-5 (échelle 1-5)

**ASTM D3511**

5 (échelle 1-5)

résistance au frottement

**ISO 105-X12**

humide 4-5 / sèche 4-5 (échelle 1-5)

**AATCC 8**

humide 5 / sèche 5 (échelle 1-5)

solidité lumière

**ISO 105-B02**

6-7 (échelle 1-8)

**AATCC 16.3: 40 hours**

5 (échelle 1-5)

résistance au glissement à la couture

**ISO 13936-2**

chaîne 4.7 mm / trame 3 mm

**ASTM D4034**

chaîne 41 lbf / trame 100 lbf

résistance à la traction

**ASTM D5034**

warp 167 lbs / weft 378 lbs

entretien



**rétrécissement: chaîne -1.6% / trame -1.6%**



**rétrécissement: chaîne -1.0% / trame -3.1%**



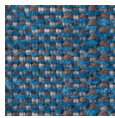
STANDARD  
100

S07-0023  
Hohenstein HTTI

# fuga

7047.01 - 7047.26

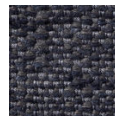
---



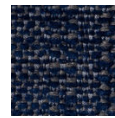
7047.01



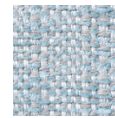
7047.02



7047.03



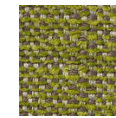
7047.04



7047.05



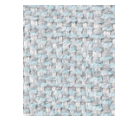
7047.06



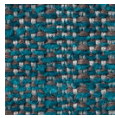
7047.07



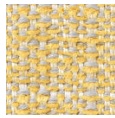
7047.08



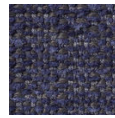
7047.09



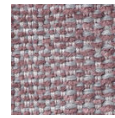
7047.10



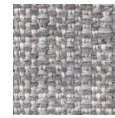
7047.11



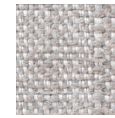
7047.12



7047.13



7047.14



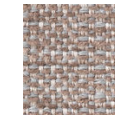
7047.15



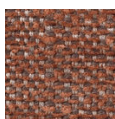
7047.16



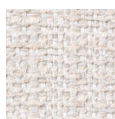
7047.17



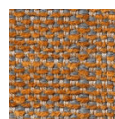
7047.18



7047.19



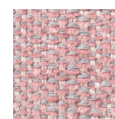
7047.20



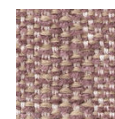
7047.21



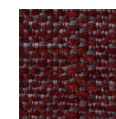
7047.22



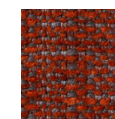
7047.23



7047.24



7047.25



7047.26