

fuga

7047.01 - 7047.26



binder

upholstery

opis

dwubarwna tkana tkanina szenilowa we współczesnych kolorach

skład

79% recycled polyester FR / 21% polyester FR

szerokość

± 135 cm, ± 53 inches

gramatura

± 807 gr/m¹, ± 26 oz/yd¹ fabrics

odporność ogniowa

EN 1021/ 1- 2

BS 5852, crib 5

NF P 92 / 503 - 507, M1

DIN 4102, B1

IMO 2010 FTP part 8

UNI 9175, classe 1 IM

Cal TB 117

NFPA 260, class 1

odporność na ścieranie

ISO 12947-2

75.000 rubs martindale

ASTM D4157

40.000 double rubs wyzenbeek

odporność na wyrywanie włókien

ISO 12945-2

4-5 (skala 1-5)

ASTM D3511

5 (skala 1-5)

odporność na wycieranie

ISO 105-X12

mokre 4-5 / suche 4-5 (skala 1-5)

AATCC 8

mokre 5 / suche 5 (skala 1-5)

odporność na działanie światła

ISO 105-B02

6-7 (skala 1-8)

AATCC 16.3: 40 hours

5 (skala 1-5)

wytrzymałość szwów

ISO 13936-2

lizo 4.7 mm / trama 3 mm

ASTM D4034

lizo 41 lbf / trama 100 lbf

odporność na tarcie

ASTM D5034

warp 167 lbs / weft 378 lbs

codzienna dbałość o produkt



kurczliwość: łańcuch -1.6% / wątek -1.6%



kurczliwość: łańcuch -1.0% / wątek -3.1%

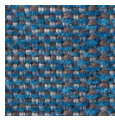


STANDARD
100

S07-0023
Hohenstein HTTI

fuga

7047.01 - 7047.26



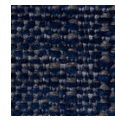
7047.01



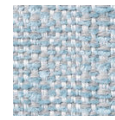
7047.02



7047.03



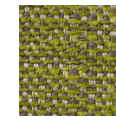
7047.04



7047.05



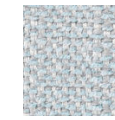
7047.06



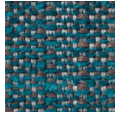
7047.07



7047.08



7047.09



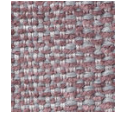
7047.10



7047.11



7047.12



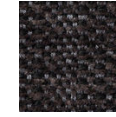
7047.13



7047.14



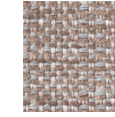
7047.15



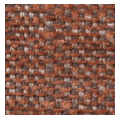
7047.16



7047.17



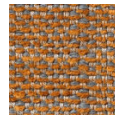
7047.18



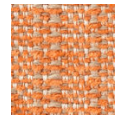
7047.19



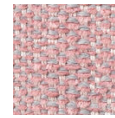
7047.20



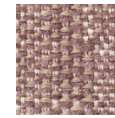
7047.21



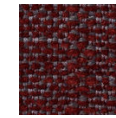
7047.22



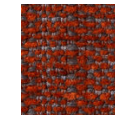
7047.23



7047.24



7047.25



7047.26