

fuga

7047.01 - 7047.26



binder

upholstery

descrição

“chenille” de dois tons em cores contemporâneas

composição

79% recycled polyester FR / 21% polyester FR

largura

± 135 cm, ± 53 inches

gramagem

± 807 gr/m¹, ± 26 oz/yd¹ fabrics

resistência ao fogo

EN 1021/ 1- 2

BS 5852, crib 5

NF P 92 / 503 - 507, M1

DIN 4102, B1

IMO 2010 FTP part 8

UNI 9175, classe 1 IM

Cal TB 117

NFPA 260, class 1

desgaste à abrasão

ISO 12947-2

75.000 rubs martindale

ASTM D4157

40.000 double rubs wyzenbeek

pilling

ISO 12945-2

4-5 (escala 1-5)

ASTM D3511

5 (escala 1- 5)

resistência à fricção

ISO 105-X12

molhado 4-5 / seco 4-5 (escala 1-5)

AATCC 8

molhado 5 / seco 5 (escala 1-5)

resistência à luz

ISO 105-B02

6-7 (escala 1-8)

AATCC 16.3: 40 hours

5 (escala 1-5)

resistência ao deslizamento das costuras

ISO 13936-2

alongamento 4.7 mm / trama 3 mm

ASTM D4034

alongamento 41 lbf / trama 100 lbf

resistência à tensão

ASTM D5034

warp 167 lbs / weft 378 lbs

manutenção



encolhimento: alongamento -1.6% / trama -1.6%



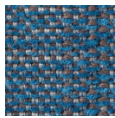
encolhimento: alongamento -1.0% / trama -3.1%



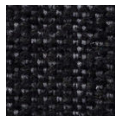
STANDARD
100
S07-0023
Hohenstein HTTI

fuga

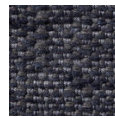
7047.01 - 7047.26



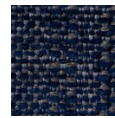
7047.01



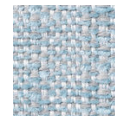
7047.02



7047.03



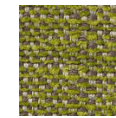
7047.04



7047.05



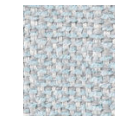
7047.06



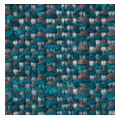
7047.07



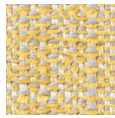
7047.08



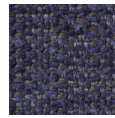
7047.09



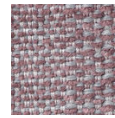
7047.10



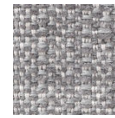
7047.11



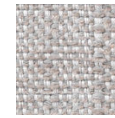
7047.12



7047.13



7047.14



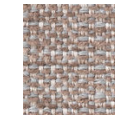
7047.15



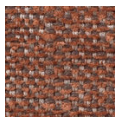
7047.16



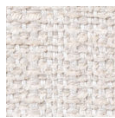
7047.17



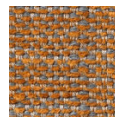
7047.18



7047.19



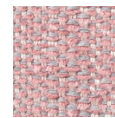
7047.20



7047.21



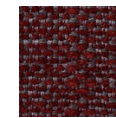
7047.22



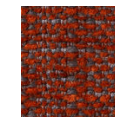
7047.23



7047.24



7047.25



7047.26