

fuga

7047.01 - 7047.26



binder

upholstery

描述

两种色调的当代色彩配色的编织雪尼尔

组成

79% recycled polyester FR / 21% polyester FR

宽度

± 135 cm, ± 53 inches

重量

± 807 gr/m², ± 26 oz/yd² fabrics

阻燃

EN 1021/ 1—2

BS 5852, crib 5

NF P 92 / 503 — 507, M1

DIN 4102, B1

IMO 2010 FTP part 8

UNI 9175, classe 1 IM

Cal TB 117

NFPA 260, class 1

耐磨性

ISO 12947—2

75.000 rubs martindale

ASTM D4157

40.000 double rubs wyzenbeek

起毛

ISO 12945-2

4—5 (由 1—5)

ASTM D3511

5 (由 1—5)

耐擦拭

ISO 105—X12

湿 4-5 / 干 4-5 (由 1—5)

AATCC 8

湿 5 / 干 5 (由 1—5)

耐褪色

ISO 105—B02

6-7 (由 1—8)

AATCC 16,3: 40 hours

5 (由 1—5)

耐滑缝

ISO 13936—2

纵向收缩比 4.7 mm / 横向收缩比 3 mm

ASTM D4034

纵向收缩比 41 lbf / 横向收缩比 100 lbf

屈伸强度

ASTM D5034

warp 167 lbs / weft 378 lbs



收缩□ : 纵向收缩比 -1.6% / 横向收缩比 -1.6%



收缩□ : 纵向收缩比 -1.0% / 横向收缩比 -3.1%

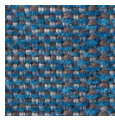


STANDARD
100

S07-0023
Hohenstein HTTI

fuga

7047.01 - 7047.26



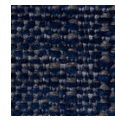
7047.01



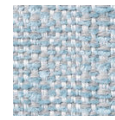
7047.02



7047.03



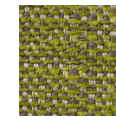
7047.04



7047.05



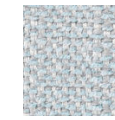
7047.06



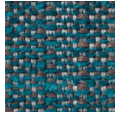
7047.07



7047.08



7047.09



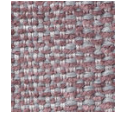
7047.10



7047.11



7047.12



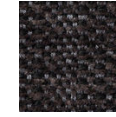
7047.13



7047.14



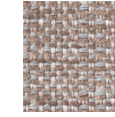
7047.15



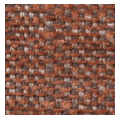
7047.16



7047.17



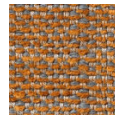
7047.18



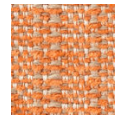
7047.19



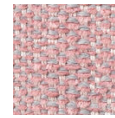
7047.20



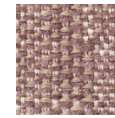
7047.21



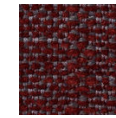
7047.22



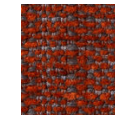
7047.23



7047.24



7047.25



7047.26