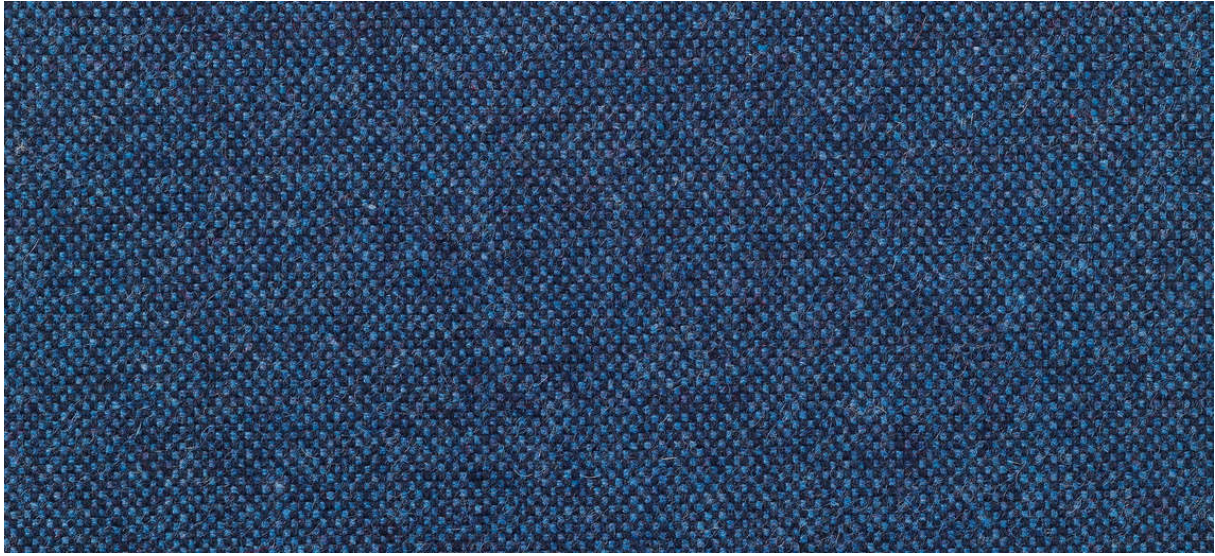


wolin

7050.01 - 7050.47



binder

upholstery

descripción

fieltro finamente tejido, calidad de lana, en una amplia variedad de colores lisos y de mezcla

composición

75% post-consumer recycled lana / 20poliéster / 5% poliamida

ancho

± 150 cm, ± 59 inches

peso

± 638 gr/m¹, ± 21 oz/yd¹ fabrics

combustión retardada

EN 1021/1-2

BS 5852, crib 5

NF P 92/503-507, M2

DIN 4102, B2

IMO 2010 FTP part 8

UNI 9175, classe 1 IM

Cal TB 117

NFPA 260, class 1

resistencia al desgaste

ISO 12947-2

>100.000 rubs martindale

ASTM D4157

100.000 double rubs wyzenbeek

pilling

ISO 12945-2

3-4 (escala 1-5)

ASTM D3511

4 (escala 1-5)

resistencia al frotamiento

ISO 105-X12

mojado 4-5 / seco 4-5 (escala 1-5)

AATCC 8

mojado 4-5 / seco 5 (escala 1-5)

insensibilidad a la luz

ISO 105-B02

6 (escala 1-8)

AATCC 16.3: 40 hours

4 (escala 1-5)

resistencia al deslizamiento de costuras

ISO 13936 - 2

lizo 3 mm / trama 3.4 mm

ASTM D4034

lizo 82 lbf / trama 81 lbf

resistencia a la tensión

ASTM D5034

warp 123 lbs / weft 109 lbs

mantenimiento



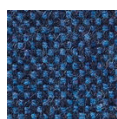


STANDARD
100

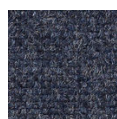
S19-3058
Hohenstein HTTI

wolin

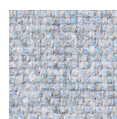
7050.01 - 7050.47



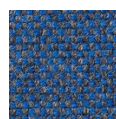
7050.01



7050.02



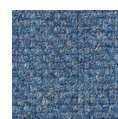
7050.03



7050.04



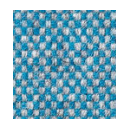
7050.05



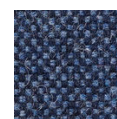
7050.06



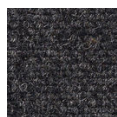
7050.07



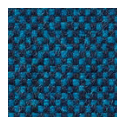
7050.08



7050.09



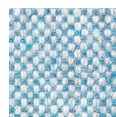
7050.10



7050.11



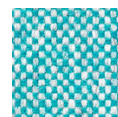
7050.12



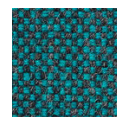
7050.13



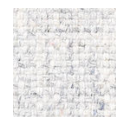
7050.14



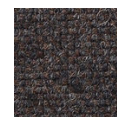
7050.15



7050.16



7050.17



7050.18



7050.19



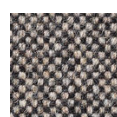
7050.20



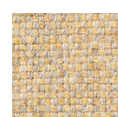
7050.21



7050.22



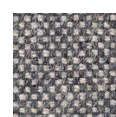
7050.23



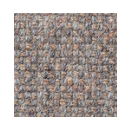
7050.24



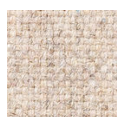
7050.25



7050.26



7050.27



7050.28



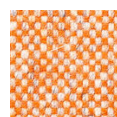
7050.29



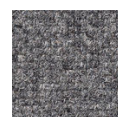
7050.30



7050.31



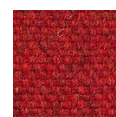
7050.32



7050.33



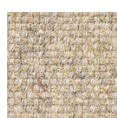
7050.34



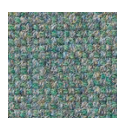
7050.35



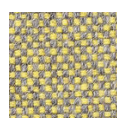
7050.36



7050.37



7050.38



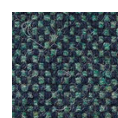
7050.39



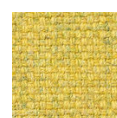
7050.40



7050.41



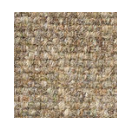
7050.42



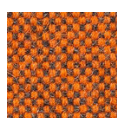
7050.43



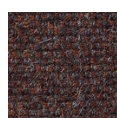
7050.44



7050.45



7050.46



7050.47