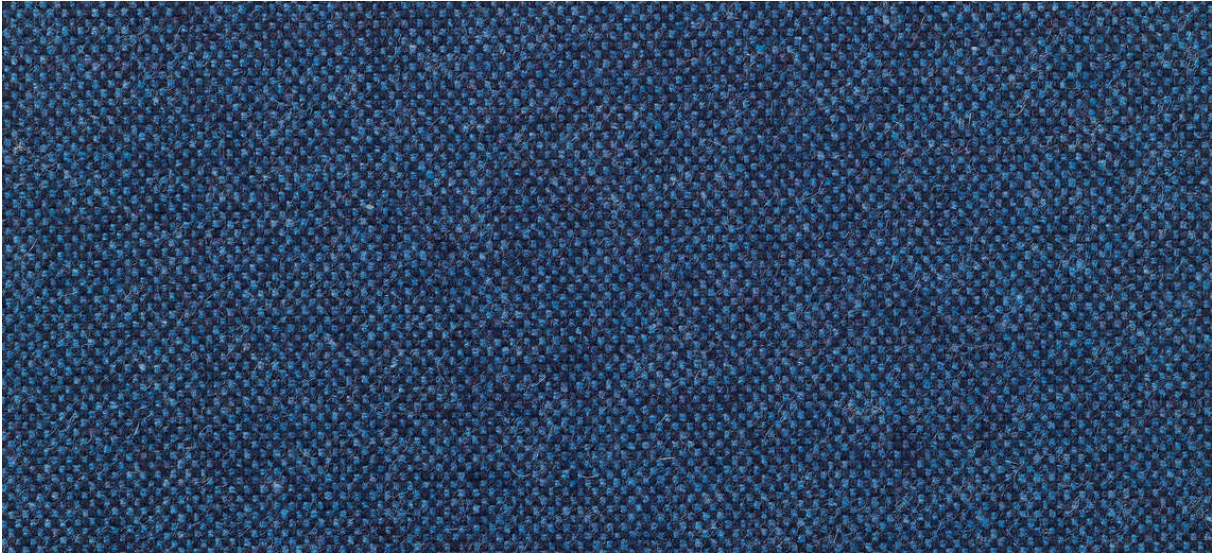


wolin

7050.01 - 7050.47



binder

upholstery

omschrijving

vilten, fijn geweven wolkwaliteit, in een brede range van effen en melange kleuren

samenstelling

75% post-consumer recycled wol / 20% polyester / 5% polyamide

breedte

± 150 cm, ± 59 inches

gewicht

± 638 gr/m¹, ± 21 oz/yd¹ fabrics

brandwerendheid

EN 1021/1-2

BS 5852, crib 5

NF P 92/503-507, M2

DIN 4102, B2

IMO 2010 FTP part 8

UNI 9175, classe 1 IM

Cal TB 117

NFPA 260, class 1

slijtvastheid

ISO 12947-2

>100.000 rubs martindale

ASTM D4157

100.000 double rubs wyzenbeek

pilling

ISO 12945-2

3-4 (schaal 1-5)

ASTM D3511

4 (schaal 1-5)

wrijfechtheid

ISO 105-X12

nat 4-5 / droog 4-5 (schaal 1-5)

AATCC 8

nat 4-5 / droog 5 (schaal 1-5)

lichtechtheid

ISO 105-B02

6 (schaal 1-8)

AATCC 16.3: 40 hours

4 (schaal 1-5)

naadschuifweerstand

ISO 13936 - 2

ketting 3 mm / inslag 3.4 mm

ASTM D4034

ketting 82 lbf / inslag 81 lbf

treksterkte

ASTM D5034

warp 123 lbs / weft 109 lbs

onderhoud



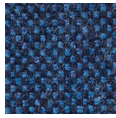


STANDARD
100

S19-3058
Hohenstein HTTI

wolin

7050.01 - 7050.47



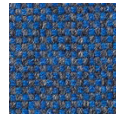
7050.01



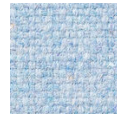
7050.02



7050.03



7050.04



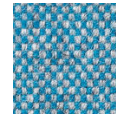
7050.05



7050.06



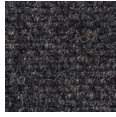
7050.07



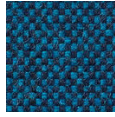
7050.08



7050.09



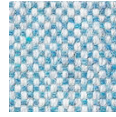
7050.10



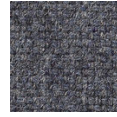
7050.11



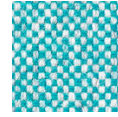
7050.12



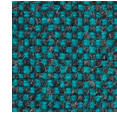
7050.13



7050.14



7050.15



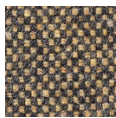
7050.16



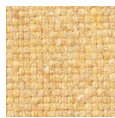
7050.17



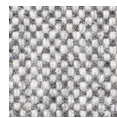
7050.18



7050.19



7050.20



7050.21



7050.22



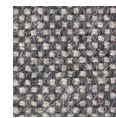
7050.23



7050.24



7050.25



7050.26



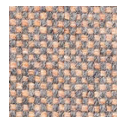
7050.27



7050.28



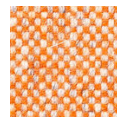
7050.29



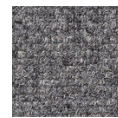
7050.30



7050.31



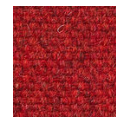
7050.32



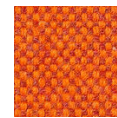
7050.33



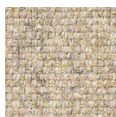
7050.34



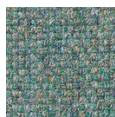
7050.35



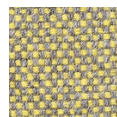
7050.36



7050.37



7050.38



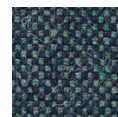
7050.39



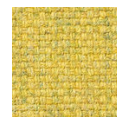
7050.40



7050.41



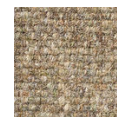
7050.42



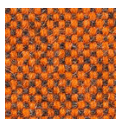
7050.43



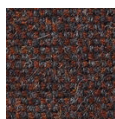
7050.44



7050.45



7050.46



7050.47