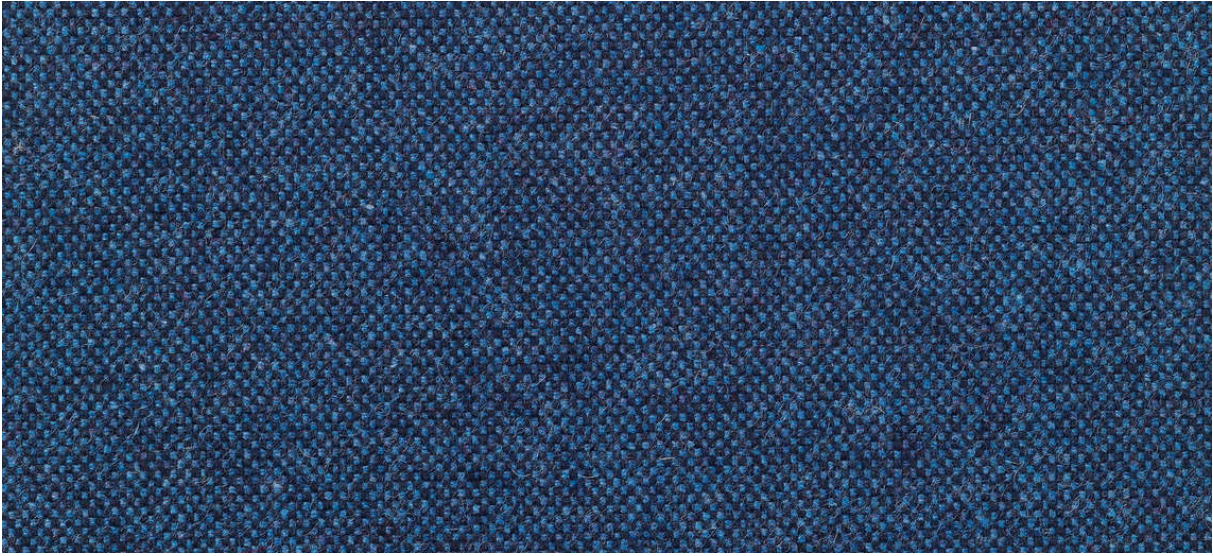


wolin

7050.01 - 7050.47



binder

upholstery

描述

手感细腻的羊毛面料，配有多种纯色和混合色彩

组成

75% post-consumer recycled wool / 20% polyester / 5% polyamide

宽度

± 150 cm, ± 59 inches

重量

± 638 gr/m², ± 21 oz/yd² fabrics

阻燃

EN 1021/1-2

BS 5852, crib 5

NF P 92/503-507, M2

DIN 4102, B2

IMO 2010 FTP part 8

UNI 9175, classe 1 IM

Cal TB 117

NFPA 260, class 1

耐磨性

ISO 12947-2

>100,000 rubs martindale

ASTM D4157

100,000 double rubs wyzenbeek

起毛

ISO 12945-2

3-4 (由 1-5)

ASTM D3511

4 (由 1-5)

耐擦拭

ISO 105-X12

湿 4-5 / 干 4-5 (由 1-5)

AATCC 8

湿 4-5 / 干 5 (由 1-5)

耐褪色

ISO 105-B02

6 (由 1-8)

AATCC 16,3: 40 hours

4 (由 1-5)

耐滑缝

ISO 13936 - 2

纵向收缩比 3 mm / 横向收缩比 3.4 mm

ASTM D4034

纵向收缩比 82 lbf / 横向收缩比 81 lbf

屈伸强度

ASTM D5034

warp 123 lbs / weft 109 lbs



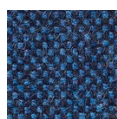


STANDARD
100

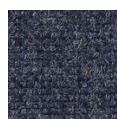
S19-3058
Hohenstein HTTI

wolin

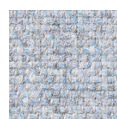
7050.01 - 7050.47



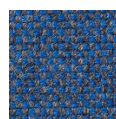
7050.01



7050.02



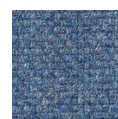
7050.03



7050.04



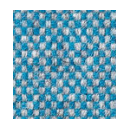
7050.05



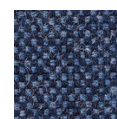
7050.06



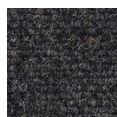
7050.07



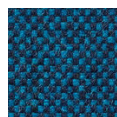
7050.08



7050.09



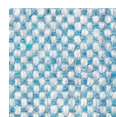
7050.10



7050.11



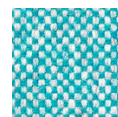
7050.12



7050.13



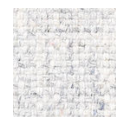
7050.14



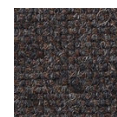
7050.15



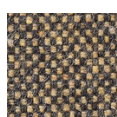
7050.16



7050.17



7050.18



7050.19



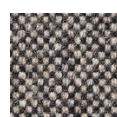
7050.20



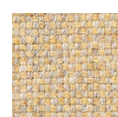
7050.21



7050.22



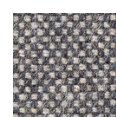
7050.23



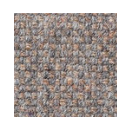
7050.24



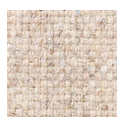
7050.25



7050.26



7050.27



7050.28



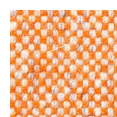
7050.29



7050.30



7050.31



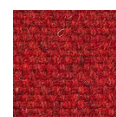
7050.32



7050.33



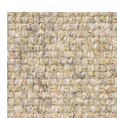
7050.34



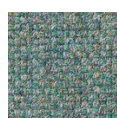
7050.35



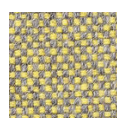
7050.36



7050.37



7050.38



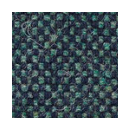
7050.39



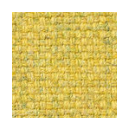
7050.40



7050.41



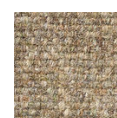
7050.42



7050.43



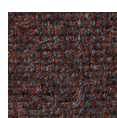
7050.44



7050.45



7050.46



7050.47