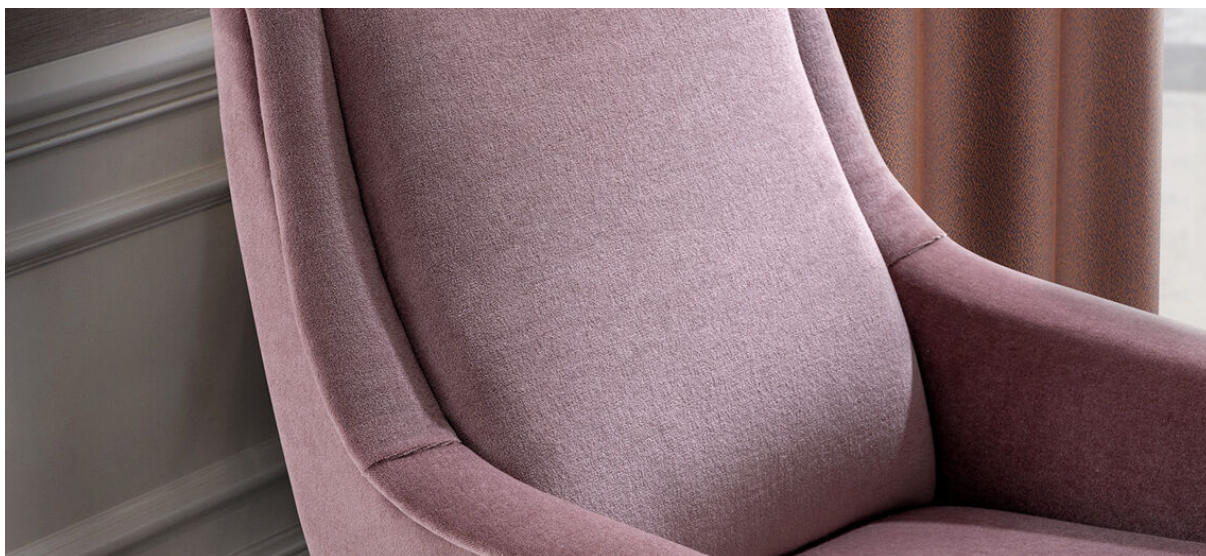


ariana

7061.01 - 7061.35



binder

upholstery

descripción

velvetón para tapicería de mohair liso con superficie de pelo nivelada

composición

100% mohair (base: algodón)

ancho

± 140 cm, ± 55 inches

peso

± 765 gr/m¹, ± 25 oz/yd¹ fabrics

combustión retardada

EN 1021/1-2

BS 5852, crib 5

NF P 92 / 503 - 507, M2 with FR finish

DIN 4102, B2

UNI 9175, classe 1 IM

Cal TB 117

NFPA 260, class 1

IMO 2010 FTP part 8

resistencia al desgaste

ISO 12947-2

90.000 rubs martindale

ASTM D4157

100.000 double rubs wyzenbeek

pilling

ISO 12945-2

4 - 5 (escala 1-5)

ASTM D3511

5 (escala 1-5)

resistencia al frotamiento

ISO 105-X12

mojado 4 - 5 / seco 4 - 5 (escala 1-5)

AATCC 8

mojado 5 / seco 5 (escala 1-5)

insensibilidad a la luz

ISO 105-B02

5 (escala 1-8)

AATCC 16.3: 40 hours

3.5 (escala 1-5)

resistencia al deslizamiento de costuras

ISO 13936 - 2

lizo 2 mm / trama 2.5 mm

ASTM D4034

lizo 79 lbs / trama 79 lbs

resistencia a la tensión

ASTM D5034

warp 75 lbs / weft 145 lbs

información adicional

cradle to cradle bronze certified

mantenimiento



límpiase solo en seco



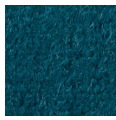
STANDARD
100
1207035
Centexbel



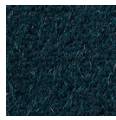
BRONZE

ariana

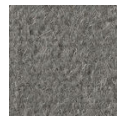
7061.01 - 7061.35



7061.01



7061.02



7061.03



7061.04



7061.05



7061.06



7061.07



7061.08



7061.09



7061.10



7061.11



7061.12



7061.13



7061.14



7061.15



7061.16



7061.17



7061.18



7061.19



7061.20



7061.21



7061.22



7061.23



7061.24



7061.25



7061.26



7061.27



7061.28



7061.29



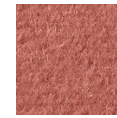
7061.30



7061.31



7061.32



7061.33



7061.34



7061.35