

# burton

7056.01 - 7056.23



## Kollektion

**upholstery**

## Beschreibung

**zweifarbige gewebtes Uni mit Melange-Effekt**

## Zusammensetzung

**100% schwer entflammbares Polyester**

## Breite

**± 140 cm, ± 55 inches**

## Gewicht

**± 763 gr/m<sup>1</sup>, ± 25 oz/yd<sup>1</sup> fabrics**

## Brandschutzklasse

**EN 1021/ 1-2**

**BS 5852, crib 5**

**NF P 92 / 503 - 507, M1**

**DIN 4102, B1**

**UNI 9175, classe 1 IM**

**Cal TB 117**

**NFPA 260, class 1**

**IMO 2010 FTP part 8**

## Abrieb

**ISO 12947-2**

80.000 rubs martindale

**ASTM D4157**

100.000 double rubs wyzenbeek

## Pillingbildung

**ISO 12945-2**

4 (skala 1-5)

**ASTM D3511**

4 (skala 1-5)

## Reibechtheit

**ISO 105-X12**

nass 4 - 5 / trocken 4 - 5 (skala 1-5)

**AATCC 8**

nass 5 / trocken 5 (skala 1-5)

## Lichtechtheit

**ISO 105-B02**

6 - 7 (skala 1-8)

**AATCC 16.3: 40 hours**

4.5 (skala 1-5)

## Nahtschibewiderstand

**ISO 13936 - 2**

Kette 3 mm / Schuss 2.7 mm

**ASTM D4034**

Kette 101 lbs / Schuss 107 lbs

## Reißfestigkeit

**ASTM D5034**

warp 365 lbs / weft 289 lbs

## Pflege



**Schrumpfwerte: Kette -0.7% / Schuss -0.6%**



**Schrumpfwerte: Kette -1.8% / Schuss -2.2%**



STANDARD  
100

S07-0023  
Hohenstein HTTI

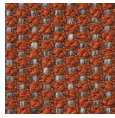
# burton

7056.01 - 7056.23

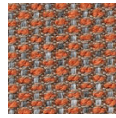
---



7056.01



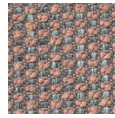
7056.02



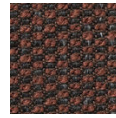
7056.03



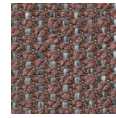
7056.04



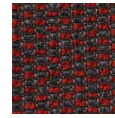
7056.05



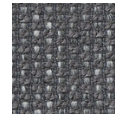
7056.06



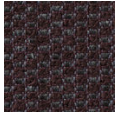
7056.07



7056.08



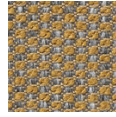
7056.09



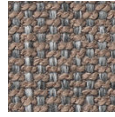
7056.10



7056.11



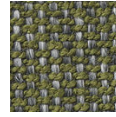
7056.12



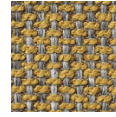
7056.13



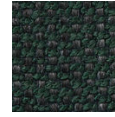
7056.14



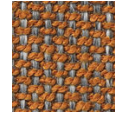
7056.15



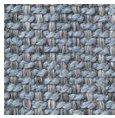
7056.16



7056.17



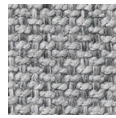
7056.18



7056.19



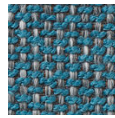
7056.20



7056.21



7056.22



7056.23