

burton

7056.01 - 7056.23



binder

upholstery

description

uni tissu bicolore à effet mélangé

composition

100% polyester ignifuge

largeur

± 140 cm, ± 55 inches

poids

± 763 gr/m¹, ± 25 oz/yd¹ fabrics

non feu

EN 1021/ 1-2

BS 5852, crib 5

NF P 92 / 503 - 507, M1

DIN 4102, B1

UNI 9175, classe 1 IM

Cal TB 117

NFPA 260, class 1

IMO 2010 FTP part 8

résistance à l'abrasion

ISO 12947-2

80.000 rubs martindale

ASTM D4157

100.000 double rubs wyzenbeek

boulochage

ISO 12945-2

4 (échelle 1-5)

ASTM D3511

4 (échelle 1-5)

résistance au frottement

ISO 105-X12

humide 4 - 5 / sèche 4 - 5 (échelle 1-5)

AATCC 8

humide 5 / sèche 5 (échelle 1-5)

solidité lumière

ISO 105-B02

6 - 7 (échelle 1-8)

AATCC 16.3: 40 hours

4.5 (échelle 1-5)

résistance au glissement à la couture

ISO 13936 - 2

chaîne 3 mm / trame 2.7 mm

ASTM D4034

chaîne 101 lbs / trame 107 lbs

résistance à la traction

ASTM D5034

warp 365 lbs / weft 289 lbs

entretien



rétrécissement: chaîne -0.7% / trame -0.6%



rétrécissement: chaîne -1.8% / trame -2.2%



STANDARD
100

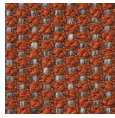
S07-0023
Hohenstein HTTI

burton

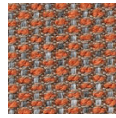
7056.01 - 7056.23



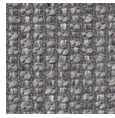
7056.01



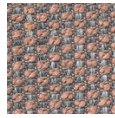
7056.02



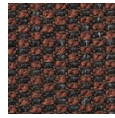
7056.03



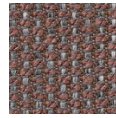
7056.04



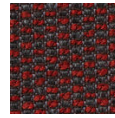
7056.05



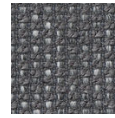
7056.06



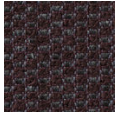
7056.07



7056.08



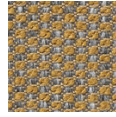
7056.09



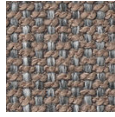
7056.10



7056.11



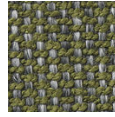
7056.12



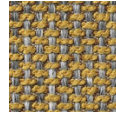
7056.13



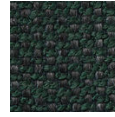
7056.14



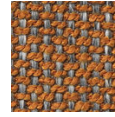
7056.15



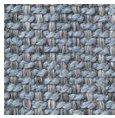
7056.16



7056.17



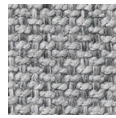
7056.18



7056.19



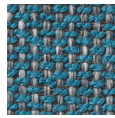
7056.20



7056.21



7056.22



7056.23