

burton

7056.01 - 7056.23



binder

upholstery

descrizione

struttura bicolore con filato melange

composizione

100% poliestere con trattamento antinfiamma

altezza

± 140 cm, ± 55 inches

peso

± 763 gr/m¹, ± 25 oz/yd¹ fabrics

resistenza al fuoco

EN 1021/ 1-2

BS 5852, crib 5

NF P 92 / 503 - 507, M1

DIN 4102, B1

UNI 9175, classe 1 IM

Cal TB 117

NFPA 260, class 1

IMO 2010 FTP part 8

resistenza all'abrasione

ISO 12947-2

80.000 rubs martindale

ASTM D4157

100.000 double rubs wyzenbeek

resistenza al pilling

ISO 12945-2

4 (scala 1-5)

ASTM D3511

4 (scala 1-5)

solidità allo sfregamento

ISO 105-X12

bagnato 4 - 5 / asciutto 4 - 5 (scala 1-5)

AATCC 8

bagnato 5 / asciutto 5 (scala 1-5)

resistenza alla luce

ISO 105-B02

6 - 7 (scala 1-8)

AATCC 16.3: 40 hours

4.5 (scala 1-5)

resistenza al taglio cucitura

ISO 13936 - 2

catena 3 mm / trama 2.7 mm

ASTM D4034

catena 101 lbs / trama 107 lbs

resistenza alla trazione

ASTM D5034

warp 365 lbs / weft 289 lbs

manutenzione



restringimento: catena -0.7% / trama -0.6%



restringimento: catena -1.8% / trama -2.2%



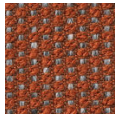
STANDARD
100
S07-0023
Hohenstein HTTI

burton

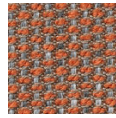
7056.01 - 7056.23



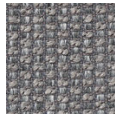
7056.01



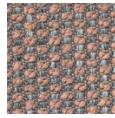
7056.02



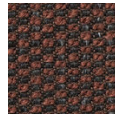
7056.03



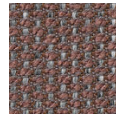
7056.04



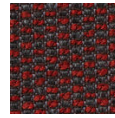
7056.05



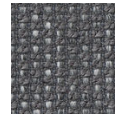
7056.06



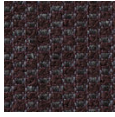
7056.07



7056.08



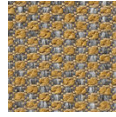
7056.09



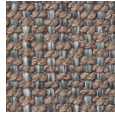
7056.10



7056.11



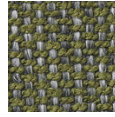
7056.12



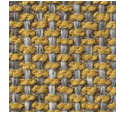
7056.13



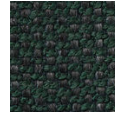
7056.14



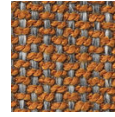
7056.15



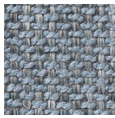
7056.16



7056.17



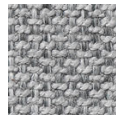
7056.18



7056.19



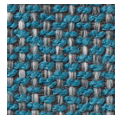
7056.20



7056.21



7056.22



7056.23