

lani

7060.01 - 7060.56



collectie

**upholstery
textile**

omschrijving

**stoere vervilte wol kwaliteit in moderne
toepasbare kleuren**

samenstelling

80% wol / 20% polyamide

breedte

± 140 cm, ± 55 inches

gewicht

± 640 gr/m¹, ± 21 oz/yd¹ fabrics

brandwerendheid

EN 1021/ 1-2

BS 5852, crib 5 with FR finish

DIN 4102, B2 with FR finish

UNI VF 9175, classe 1 IM

Cal TB 117

NFPA 260, class 1

IMO 2010 FTP part 8

NF D 60-013 - AM18

slijtvastheid

ISO 12947-2

> 300.000 rubs martindale

ASTM D4157

100.000 double rubs wyzenbeek

pilling

ISO 12945-2

4 (schaal 1-5)

ASTM D3511

2.5 (schaal 1-5)

wrijftechtheid

ISO 105-X12

wet 4 - 5 / dry 4 - 5 (schaal 1-5)

AATCC 8

wet 5 / dry 5 (schaal 1-5)

lichtechtheid

ISO 105-B02

5-7 (schaal 1-8)

AATCC 16.3: 40 hours

3.5 (schaal 1-5)

naadschuifweerstand

ISO 13936 - 2

ketting 2.6 mm / inslag 3 mm

ASTM D4034

ketting 125 lbs / inslag 116 lbs

treksterkte

ASTM D5034

warp 206 lbs / weft 202 lbs

onderhoud





STANDARD
100

S10-0100
Hohenstein HTTI

lani

7060.01 - 7060.56



7060.01



7060.02



7060.03



7060.04



7060.05



7060.06



7060.07



7060.08



7060.09



7060.10



7060.11



7060.12



7060.13



7060.14



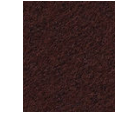
7060.15



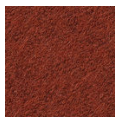
7060.16



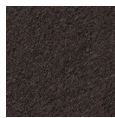
7060.17



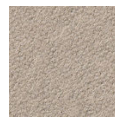
7060.18



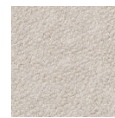
7060.19



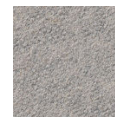
7060.20



7060.21



7060.22



7060.23



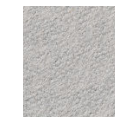
7060.24



7060.25



7060.26



7060.27



7060.28



7060.29



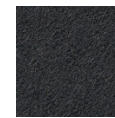
7060.30



7060.31



7060.32



7060.33



7060.34



7060.35



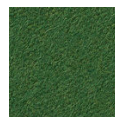
7060.36



7060.37



7060.38



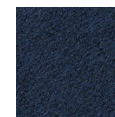
7060.39



7060.40



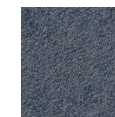
7060.41



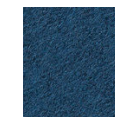
7060.42



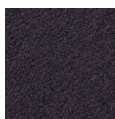
7060.43



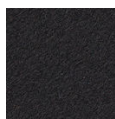
7060.44



7060.45



7060.46



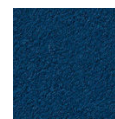
7060.47



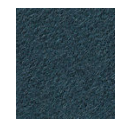
7060.48



7060.49



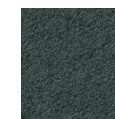
7060.50



7060.51



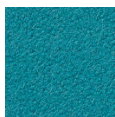
7060.52



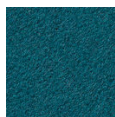
7060.53



7060.54



7060.55



7060.56