

creek

7053.01 - 7053.22



binder

upholstery
vinyl

descrizione

effetto lino irregolare a 3 colori

composizione

spalmatura vinilica spugnosa, tessuto in cotone e poliestere

altezza

± 137-140 cm, ± 54-55 inches

peso

tessuto: ± 110 gr/m², ± 5 oz/yd¹
spalmato: ± 690 gr/m², ± 31 oz/yd¹

spessore

1.1 mm, 0.04 inches

resistenza al fuoco

EN 1021/1-2
BS 5852, crib 5
NF P 92/503 - 507, M2
NF D60-013 (AM 18)
DIN 4102, B2
UNI 9175, classe 1 IM
Cal TB 117
NFPA 260, class 1
IMO 2010 FTP part 8

resistenza all'abrasione

ISO 12947-2
> 300.000 rubs martindale
ASTM D4157
100.000 double rubs wyzenbeek

solidità allo sfregamento

ISO 105-X12
wet 5 / dry 5 (scale 1-5)
AATCC 8
wet 5 / dry 5 (scale 1-5)

resistenza alla luce

ISO 105-B02
7 (scale 1-8)
ASTM D4329: 150 hours
4 (scale 1-5)

resistenza a sangue, urina, sudore e sebo cutaneo

EN 12720
5 (scale 1-5)

resistenza alla trazione

ISO 1421
length 470 N / width 313 N
ASTM D2261
length 7.3 lbs / width 9.2 lbs

resistenza alla flessione

ISO 7854
400.000 cycles

aderenza del rivestimento

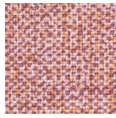
ASTM D751
length 8.3 lbf / width 5.2 lbf



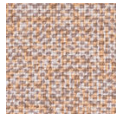
vinyl 
COMMITTED TO
SUSTAINABLE DEVELOPMENT

creek

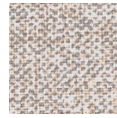
7053.01 - 7053.22



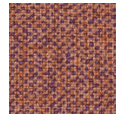
7053.01



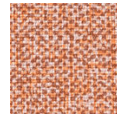
7053.02



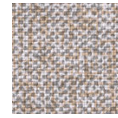
7053.03



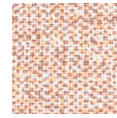
7053.04



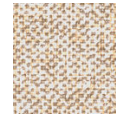
7053.05



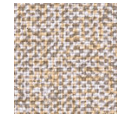
7053.06



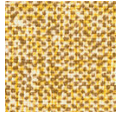
7053.07



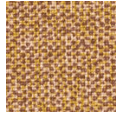
7053.08



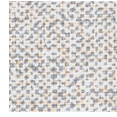
7053.09



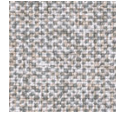
7053.10



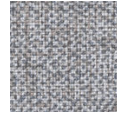
7053.11



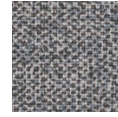
7053.12



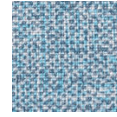
7053.13



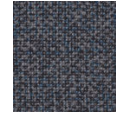
7053.14



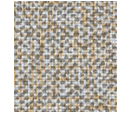
7053.15



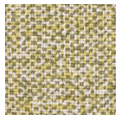
7053.16



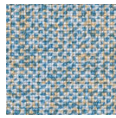
7053.17



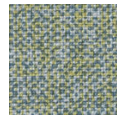
7053.18



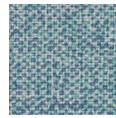
7053.19



7053.20



7053.21



7053.22