

# creek

7053.01 - 7053.22



binder

upholstery

vinyl

opis

**trójkolorowy, nieregularny wygląd lnu**

skład

**spieniony winyl, na podkładzie bawełniano-poliestrowym o splocie dzianinowym**

szerokość

**± 137-140 cm, ± 54-55 inches**

gramatura

**backing: ± 110 gr/m<sup>2</sup>, ± 5 oz/yd<sup>1</sup>**

**coating: ± 690 gr/m<sup>2</sup>, ± 31 oz/yd<sup>1</sup>**

grubość

**1.1 mm, 0.04 inches**

odporność ogniowa

**EN 1021/1-2**

**BS 5852, crib 5**

**NF P 92/503 - 507, M2**

**NF D60-013 (AM 18)**

**DIN 4102, B2**

**UNI 9175, classe 1 IM**

**Cal TB 117**

**NFPA 260, class 1**

**IMO 2010 FTP part 8**

odporność na ścieranie

**ISO 12947-2**

> 300.000 rubs martindale

**ASTM D4157**

100.000 double rubs wyzenbeek

odporność na wycieranie

**ISO 105-X12**

wet 5 / dry 5 (scale 1-5)

**AATCC 8**

wet 5 / dry 5 (scale 1-5)

odporność na działanie światła

**ISO 105-B02**

7 (scale 1-8)

**ASTM D4329: 150 hours**

4 (scale 1-5)

odporność na krew, urynę, pot i tłuszcz ludzki

**EN 12720**

5 (scale 1-5)

odporność na tarcie

**ISO 1421**

length 470 N / width 313 N

**ASTM D2261**

length 7.3 lbs / width 9.2 lbs

odporność na deformację

**ISO 7854**

400.000 cycles

spoistość

**ASTM D751**

length 8.3 lbf / width 5.2 lbf

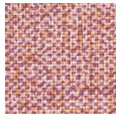


**vinyl**   
COMMITTED TO  
SUSTAINABLE DEVELOPMENT

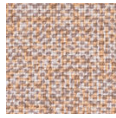
# creek

7053.01 - 7053.22

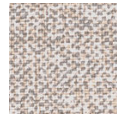
---



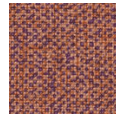
7053.01



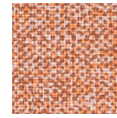
7053.02



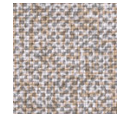
7053.03



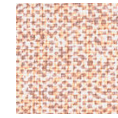
7053.04



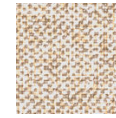
7053.05



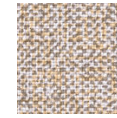
7053.06



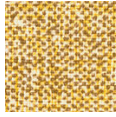
7053.07



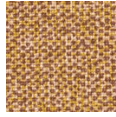
7053.08



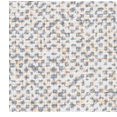
7053.09



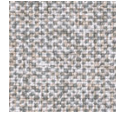
7053.10



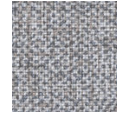
7053.11



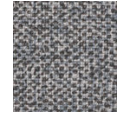
7053.12



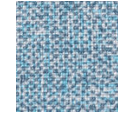
7053.13



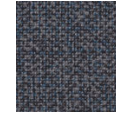
7053.14



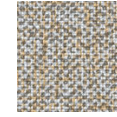
7053.15



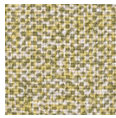
7053.16



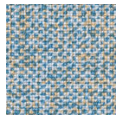
7053.17



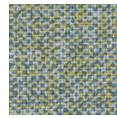
7053.18



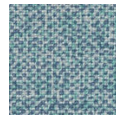
7053.19



7053.20



7053.21



7053.22