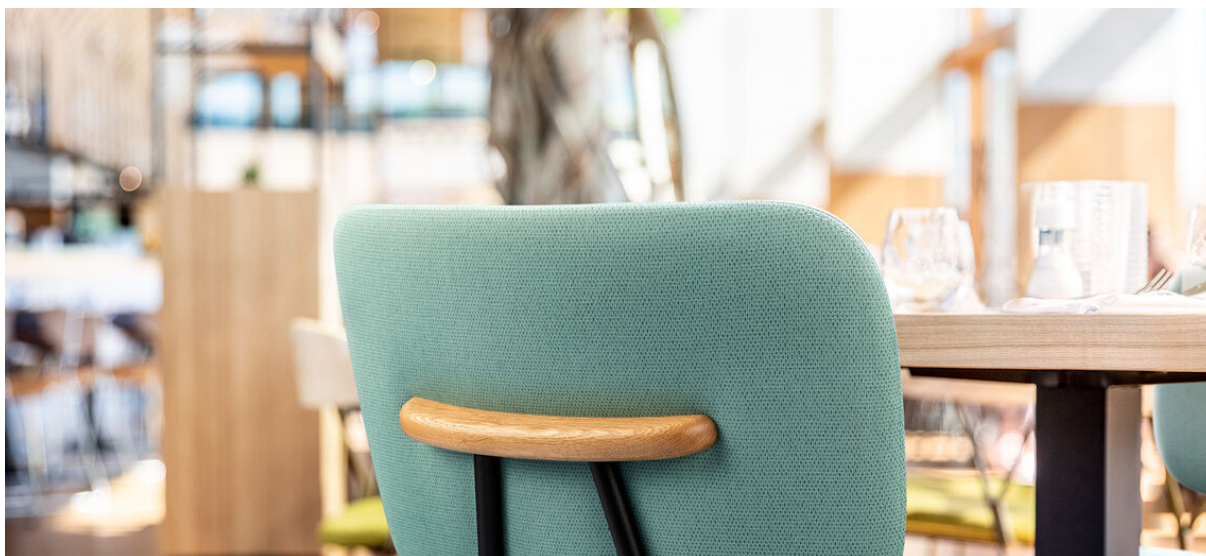


# arrow

7055.01 - 7055.23



coleção

**upholstery**  
**vinyl**

descrição

**estrutura de tecido bicolor em cores frescas e claras**

composição

**espuma vinílica, base de malha de algodão/poliéster**

largura

**± 137-140 cm, ± 54-55 inches**

gramagem

**backing: ± 110 gr/m<sup>2</sup>, ± 5 oz/yd<sup>1</sup>**  
**coating: ± 690 gr/m<sup>2</sup>, ± 31 oz/yd<sup>1</sup>**

espessura

**1.1 mm, 0.04 inches**

resistência ao fogo

**EN 1021/1-2**  
**BS 5852, crib 5**  
**NF P 92/503 - 507, M2**  
**NF D60-013 (AM 18)**  
**DIN 4102, B2**  
**UNI 9175, classe 1 IM**  
**Cal TB 117**  
**NFPA 260, class 1**  
**IMO 2010 FTP part 8**

desgaste à abrasão

**ISO 12947-2**

> 300.000 rubs martindale

**ASTM D4157**

100.000 double rubs wyzenbeek

resistência à fricção

**ISO 105-X12**

wet 5 / dry 5 (scale 1-5)

**AATCC 8**

wet 5 / dry 5 (scale 1-5)

resistência à luz

**ISO 105-B02**

7 (scale 1-8)

**ASTM D4329: 150 hours**

4 (scale 1-5)

resistência ao sangue, urina, suor e gordura da pele

**EN 12720**

5 (scale 1-5)

resistência à tensão

**ISO 1421**

length 470 N / width 313 N

**ASTM D2261**

length 7.3 lbs / width 9.2 lbs

flexíveis

**ISO 7854**

400.000 cycles

aderência ao revestimento

**ASTM D751**

length 8.3 lbf / width 5.2 lbf

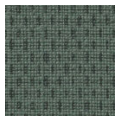


**vinyl**   
COMMITTED TO  
SUSTAINABLE DEVELOPMENT

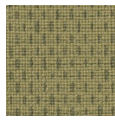
# arrow

7055.01 - 7055.23

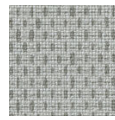
---



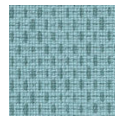
7055.01



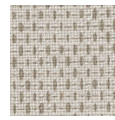
7055.02



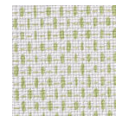
7055.03



7055.04



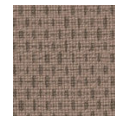
7055.05



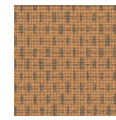
7055.06



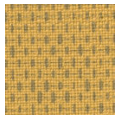
7055.07



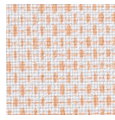
7055.08



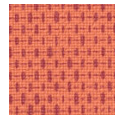
7055.09



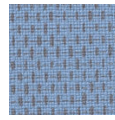
7055.10



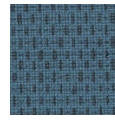
7055.11



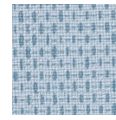
7055.12



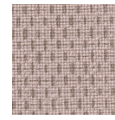
7055.13



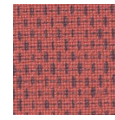
7055.14



7055.15



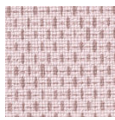
7055.16



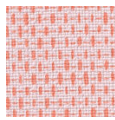
7055.17



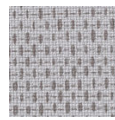
7055.18



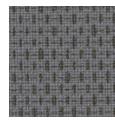
7055.19



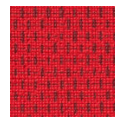
7055.20



7055.21



7055.22



7055.23