

acton

7062.01 - 7062.39



Kollektion

upholstery

Beschreibung

starker Möbelstoff in Melange-Optik mit breiter Farbauswahl

Zusammensetzung

87% recycled polyester FR / 13% polyester FR

Breite

± 141 cm, ± 56 inches

Gewicht

± 605 gr/m¹, ± 20 oz/yd¹ fabrics

Brandschutzklasse

EN 1021/ 1-2

BS 5852, crib 5

NF P 92 / 503 - 507, M1

DIN 4102, B1

UNI 9175, classe 1.IM

Cal TB 117

NFPA 260, class 1

IMO 2010 FTP part 8

Abrieb

ISO 12947-2

90.000 rubs martindale

ASTM D4157

100.000 double rubs wyzenbeek

Pillingbildung

ISO 12945-2

4 (skala 1-5)

ASTM D3511

5 (skala 1-5)

Reibechtheit

ISO 105-X12

nass 4-5 / trocken 4-5 (skala 1-5)

AATCC 8

nass 5 / trocken 5 (skala 1-5)

Lichtechtheit

ISO 105-B02

6 (skala 1-8)

AATCC 16.3: 40 hours

4 (skala 1-5)

Nahtschiebewiderstand

ISO 13936 - 2

Kette 3.7 mm / Schuss 3.7 mm

ASTM D4034

Kette 109 lbs / Schuss 86 lbs

Reißfestigkeit

ISO 13934-1

warp 1380 N / weft 1790 N

ASTM D5034

warp 263 lbs / weft 345 lbs

Pflege



Schrumpfwerte: Kette -2.7% / Schuss -0.6%

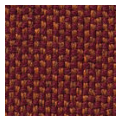


STANDARD
100

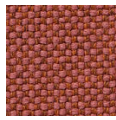
S07-0023
Hohenstein HTTI

acton

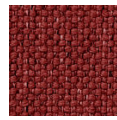
7062.01 - 7062.39



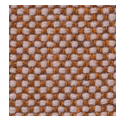
7062.01



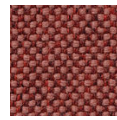
7062.02



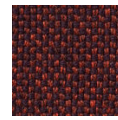
7062.03



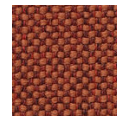
7062.04



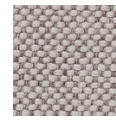
7062.05



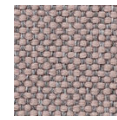
7062.06



7062.07



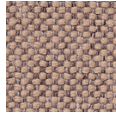
7062.08



7062.09



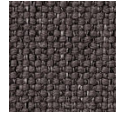
7062.10



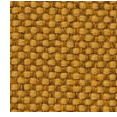
7062.11



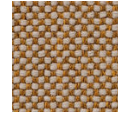
7062.12



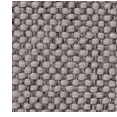
7062.13



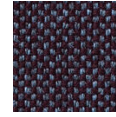
7062.14



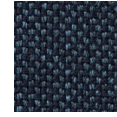
7062.15



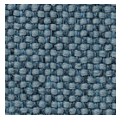
7062.16



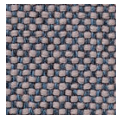
7062.17



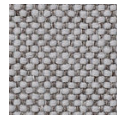
7062.18



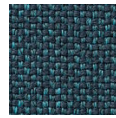
7062.19



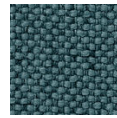
7062.20



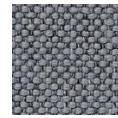
7062.21



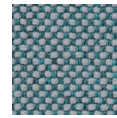
7062.22



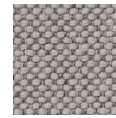
7062.23



7062.24



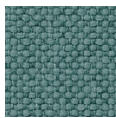
7062.25



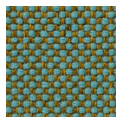
7062.26



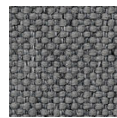
7062.27



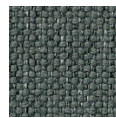
7062.28



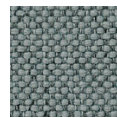
7062.29



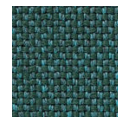
7062.30



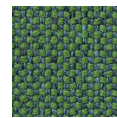
7062.31



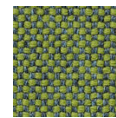
7062.32



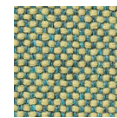
7062.33



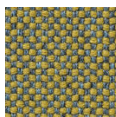
7062.34



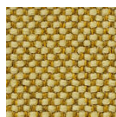
7062.35



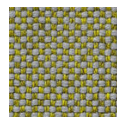
7062.36



7062.37



7062.38



7062.39