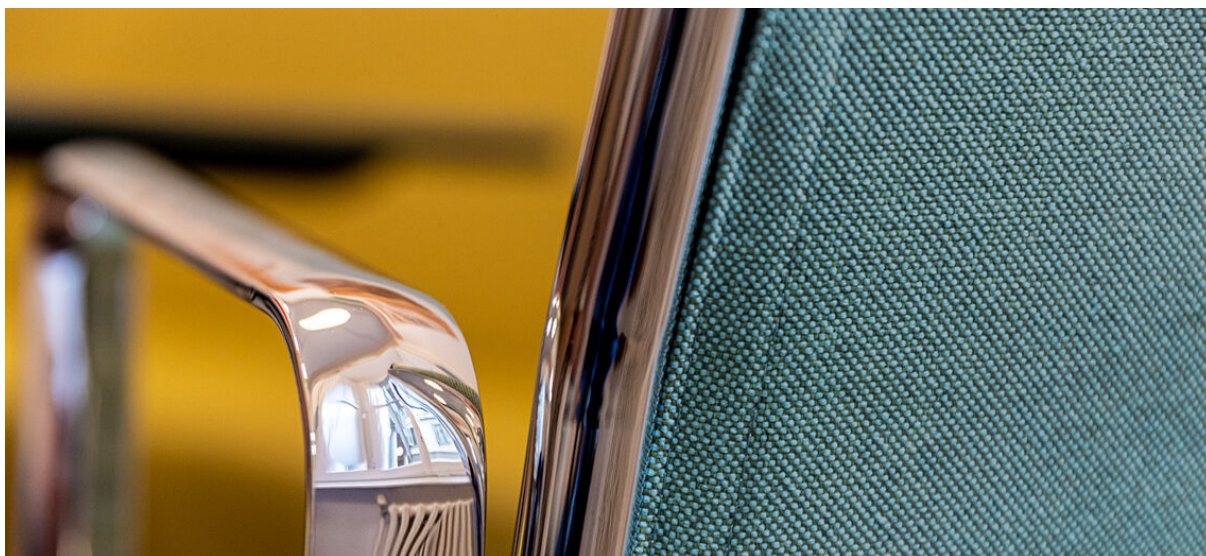


acton

7062.01 - 7062.39



binder

upholstery

composizione

87% recycled polyester FR / 13% polyester FR

altezza

± 141 cm, ± 56 inches

peso

± 605 gr/m¹, ± 20 oz/yd¹ fabrics

resistenza al fuoco

EN 1021/ 1-2

BS 5852, crib 5

NF P 92 / 503 - 507, M1

DIN 4102, B1

UNI 9175, classe 1.IM

Cal TB 117

NFPA 260, class 1

IMO 2010 FTP part 8

resistenza all'abrasione

ISO 12947-2

90.000 rubs martindale

ASTM D4157

100.000 double rubs wyzenbeek

resistenza al pilling

ISO 12945-2

4 (scala 1-5)

ASTM D3511

5 (scala 1-5)

solidità allo sfregamento

ISO 105-X12

bagnato 4-5 / asciutto 4-5 (scala 1-5)

AATCC 8

bagnato 5 / asciutto 5 (scala 1-5)

resistenza alla luce

ISO 105-B02

6 (scala 1-8)

AATCC 16.3: 40 hours

4 (scala 1-5)

resistenza al taglio cucitura

ISO 13936 - 2

catena 3.7 mm / trama 3.7 mm

ASTM D4034

catena 109 lbs / trama 86 lbs

resistenza alla trazione

ISO 13934-1

warp 1380 N / weft 1790 N

ASTM D5034

warp 263 lbs / weft 345 lbs

manutenzione



restringimento: catena -2.7% / trama -0.6%

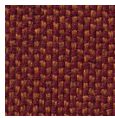


STANDARD
100

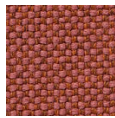
S07-0023
Hohenstein HTTI

acton

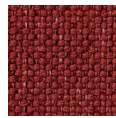
7062.01 - 7062.39



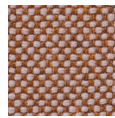
7062.01



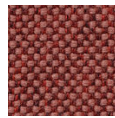
7062.02



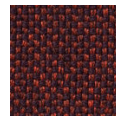
7062.03



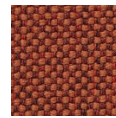
7062.04



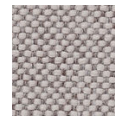
7062.05



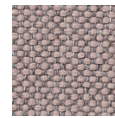
7062.06



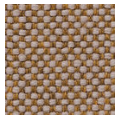
7062.07



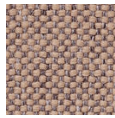
7062.08



7062.09



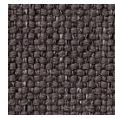
7062.10



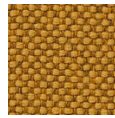
7062.11



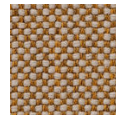
7062.12



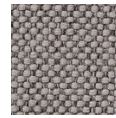
7062.13



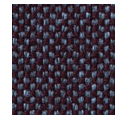
7062.14



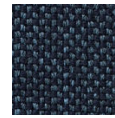
7062.15



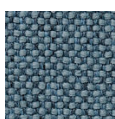
7062.16



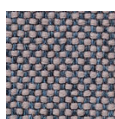
7062.17



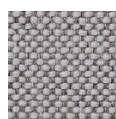
7062.18



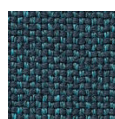
7062.19



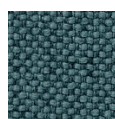
7062.20



7062.21



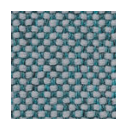
7062.22



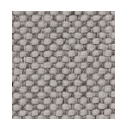
7062.23



7062.24



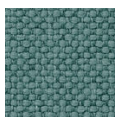
7062.25



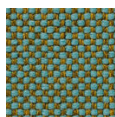
7062.26



7062.27



7062.28



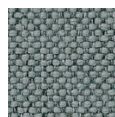
7062.29



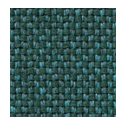
7062.30



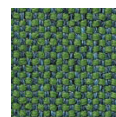
7062.31



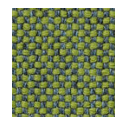
7062.32



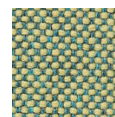
7062.33



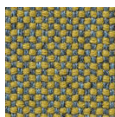
7062.34



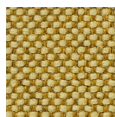
7062.35



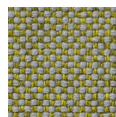
7062.36



7062.37



7062.38



7062.39